



**£550,000**  
2 bedroom flat

Overhill Road  
London

# Read all about it...

Nestled within East Dulwich, this attractive Victorian conversion flat offers a blend of classic character and modern living. With its timeless architecture and over 1,000 sq ft of internal space, the property offers an expansive home.

Spread across the top two floors, the accommodation comprises; a bright living room, 2 double bedrooms, a separate kitchen, a bathroom with 3 piece white suite, and a loft room on the second floor.

This fantastic property is in close proximity to the main hub of East Dulwich, Lordship Lane, where a variety of pubs and independent retailers are located.

**Council Tax:** Southwark Band B

## GROUND FLOOR

### Entrance Hall

Fitted carpet.

## FIRST FLOOR

### Landing

Pendant light (will be removed and replaced with basic fitting), dado rail, fitted carpet.

### Reception Room

5.02m x 4.31m (16'6" x 14'2")

Pendant lights (will be removed and replaced with basic fitting), double-glazed sash windows, wall-to-ceiling cornice, picture rail, fitted storage cupboard, bench seat with integrated storage, radiator, laminate flooring.

### Bedroom

3.62m x 3.33m (11'11" x 10'11")

Pendant light, double-glazed sash window, picture rail, radiator, laminate flooring.

### Bedroom

3.25m x 3.08m (10'8" x 10'1")

Pendant light (will be removed and replaced with basic fitting), double-glazed sash window, radiator, fitted carpet.

### Kitchen

2.49m x 2.28m (8'2" x 7'6")

Pendant light, double-glazed window, matching base units, laminate top surfaces, electric oven, induction hob with overhead fan extractor, stainless steel sink with drainer, radiator, tiled flooring.

### Bathroom

2.28m x 1.86m (7'6" x 6'1")

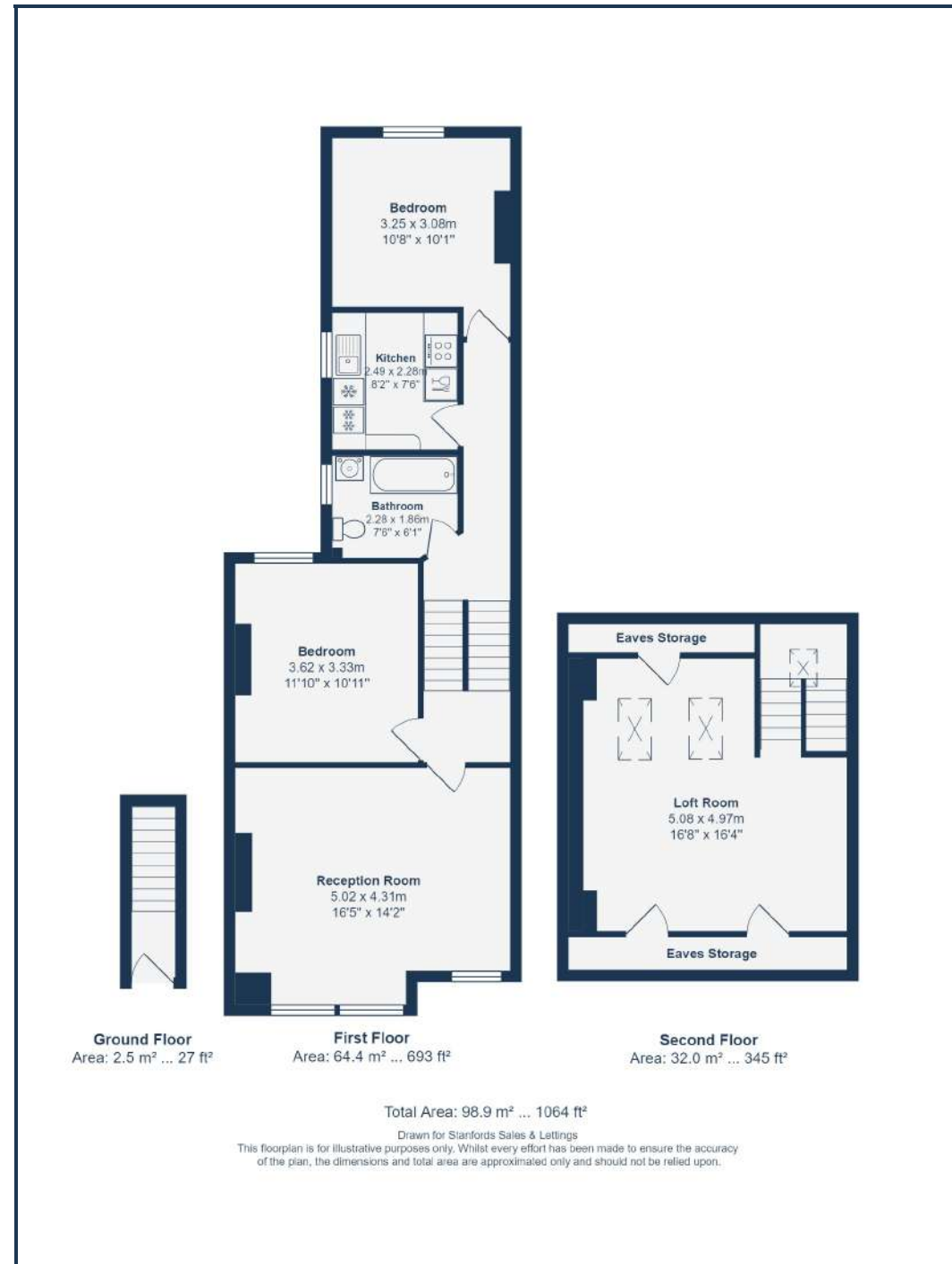
Spotlights, frosted double-glazed window, vanity sink unit, bathtub, radiator, WC, tiled walls and flooring.

## SECOND FLOOR

### Loft Room

5.08m x 4.97m (16'8" x 16'4")

Spotlights, skylights, eaves storage space, radiator, laminate flooring.



Like what you see?

Call 020 8699 6778 or email us at [foresthil@stanfordstates.london](mailto:foresthil@stanfordstates.london) to arrange a viewing or request further information

[www.stanfordstates.london](http://www.stanfordstates.london)



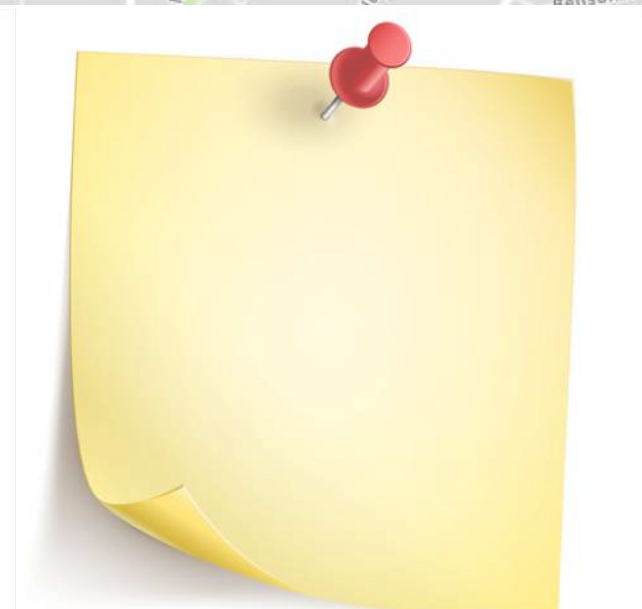
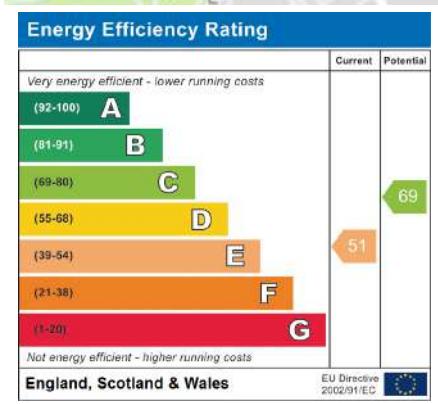
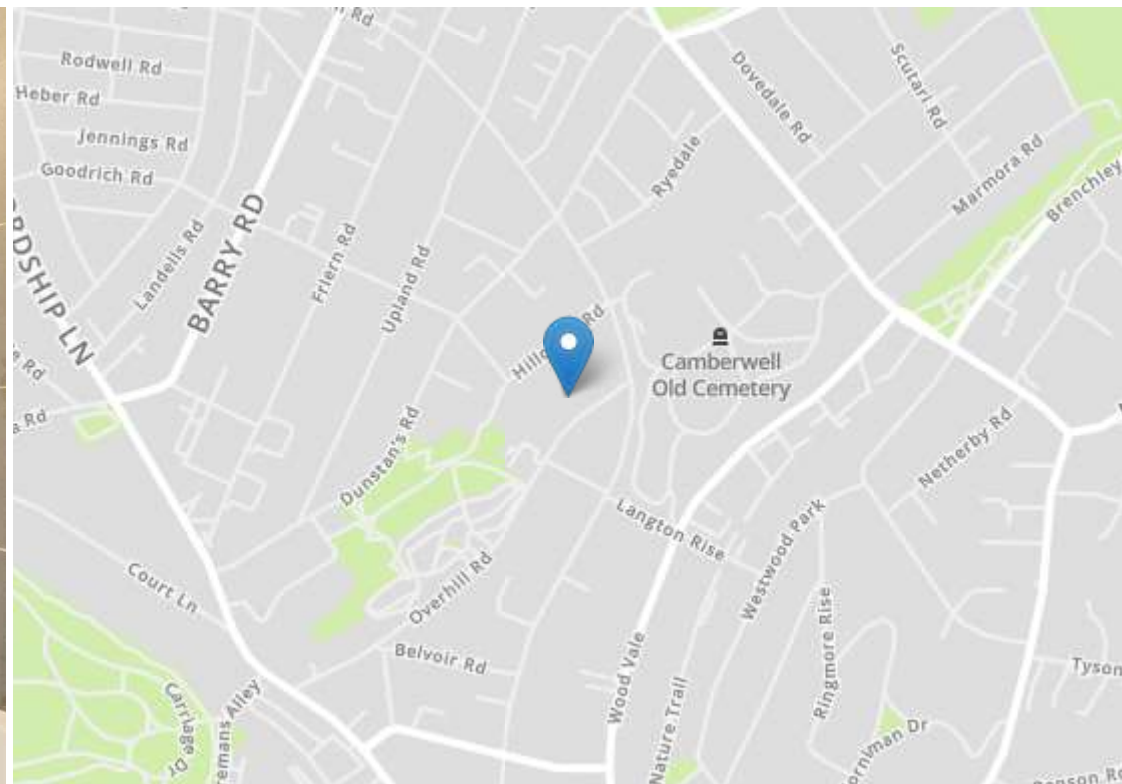


LOFT ROOM  
2 DOUBLE  
BEDROOMS  
OFF LORDSHIP LANE

APPROX 1,064 SQFT  
QUIET LOCATION  
FRONT GARDEN







Robert Stanford Estates property particulars are produced in accordance with the Consumer Rights Act (2015) and should not be construed as a contract or offer. The contents of these property particulars are to provide a general illustration only and are inconsequential to any decisions to purchase a property. A potential buyer accepts that all representations made by these particulars are made in good faith on behalf of the seller and require verification by a buyers' legal and professional representatives prior to an exchange of contracts. We offer no guarantees for any structural component, service or appliance and while we make every effort to take accurate measurements and distances, they are illustrative only. Any reliance you place on information within these particulars is therefore strictly at your own risk.