



£500,000
2 bedroom flat

Devonshire Road
Forest Hill

Read all about it...

Located on the raised ground floor of a stunning Victorian block is this spacious 2 bedroom flat. Sitting centrally between Forest Hill and Honor Oak Park, residents can enjoy the benefits of both town centres and the variety of independent shops, green spaces, transport connections, pubs, and restaurants.

Internally, the property spans over 80 sqm and has been tastefully decorated with many of the original features remaining intact, including the timber sash windows and corniced ceilings. The flat comprises; a welcoming hallway with high-level storage space within the ceiling void, leading to a spacious and bright front reception room, a contemporary kitchen with integrated appliances, 2 double rooms with built-in wardrobes, a third room that's ideal for a study or a nursery, and a shower room.

Externally, the property benefits from access to a well-maintained communal garden at the rear, and access to a communal bike shed (for a small charge), whilst at the front off-street residents' parking can be leased if required.

RAISED GROUND FLOOR

Hallway

Pendant ceiling lights, storage cupboard, laminate flooring.

Reception Room

5.44m x 4.68m (17' 10" x 15' 4")
Pendant ceiling light, wall-to-ceiling cornice, sash windows, alcove shelving, built-in cabinetries, gas fireplace with tiled hearth, radiators, fitted carpet.

Kitchen

4.37m x 2.63m (14' 4" x 8' 8")
Pendant ceiling light, sash window, matching base units, granite worktops, electric oven, gas hob with overhead fan extractor, 1 1/2 stainless steel sink with drainer, integrated fridge & freezer, storage cupboard, radiator, laminate flooring.

Bedroom

3.84m x 3.20m (12' 7" x 10' 6")
Pendant ceiling light, sash windows, built-in wardrobe, radiator, fitted carpet.

Bedroom

2.87m x 2.40m (9' 5" x 7' 10")
Pendant ceiling light, sash window, built-in wardrobe, radiator, fitted carpet.

Study/Nursery

2.40m x 1.76m (7' 10" x 5' 9")
Pendant ceiling light, sash window, radiator, fitted carpet.

Shower Room

1.95m x 1.79m (6' 5" x 5' 10")
Spotlights, walk-in shower with rainfall showerhead & sliding glass door, vanity sink unit, tiled splashback, heated towel rail, tiled flooring.



Raised Ground Floor

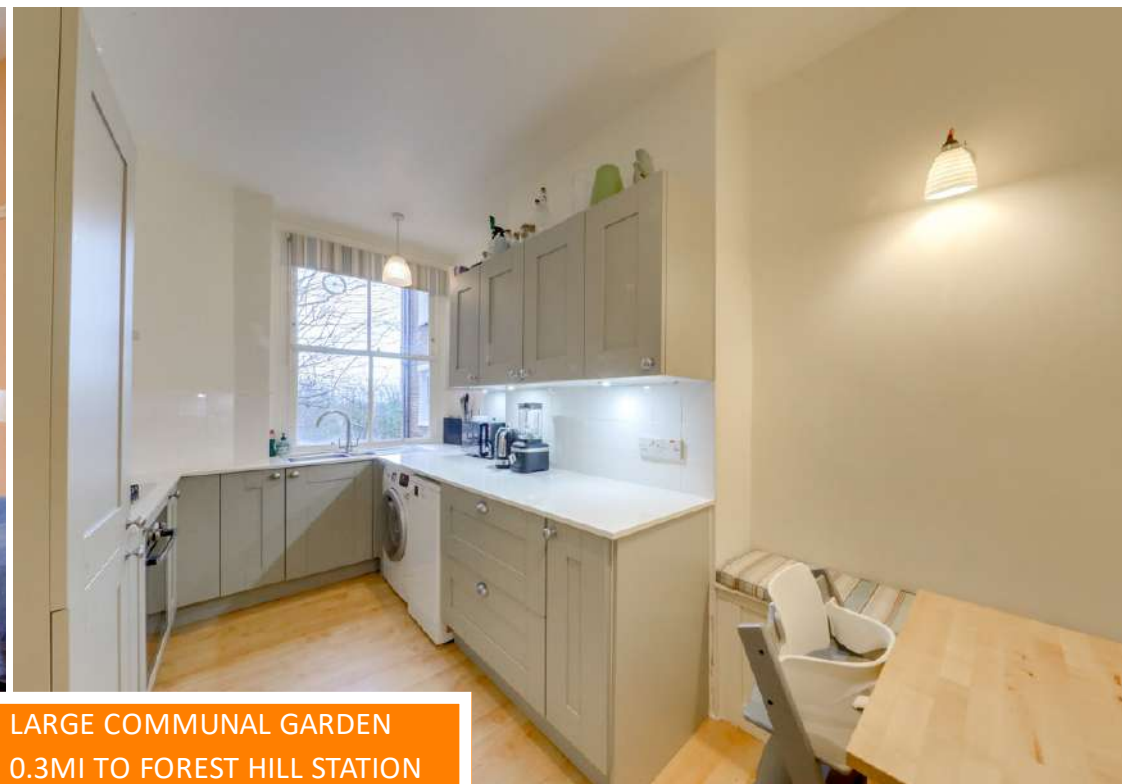
Total Area: 81.0 m² ... 871 ft²

Drawn for Stanfords Sales & Lettings
This floorplan is for illustrative purposes only. Whilst every effort has been made to ensure the accuracy of the plan, the dimensions and total area are approximated only and should not be relied upon.

Like what you see?

Call **020 8699 6778** or email us at foresthill@stanfordestates.london
to arrange a viewing or request further information

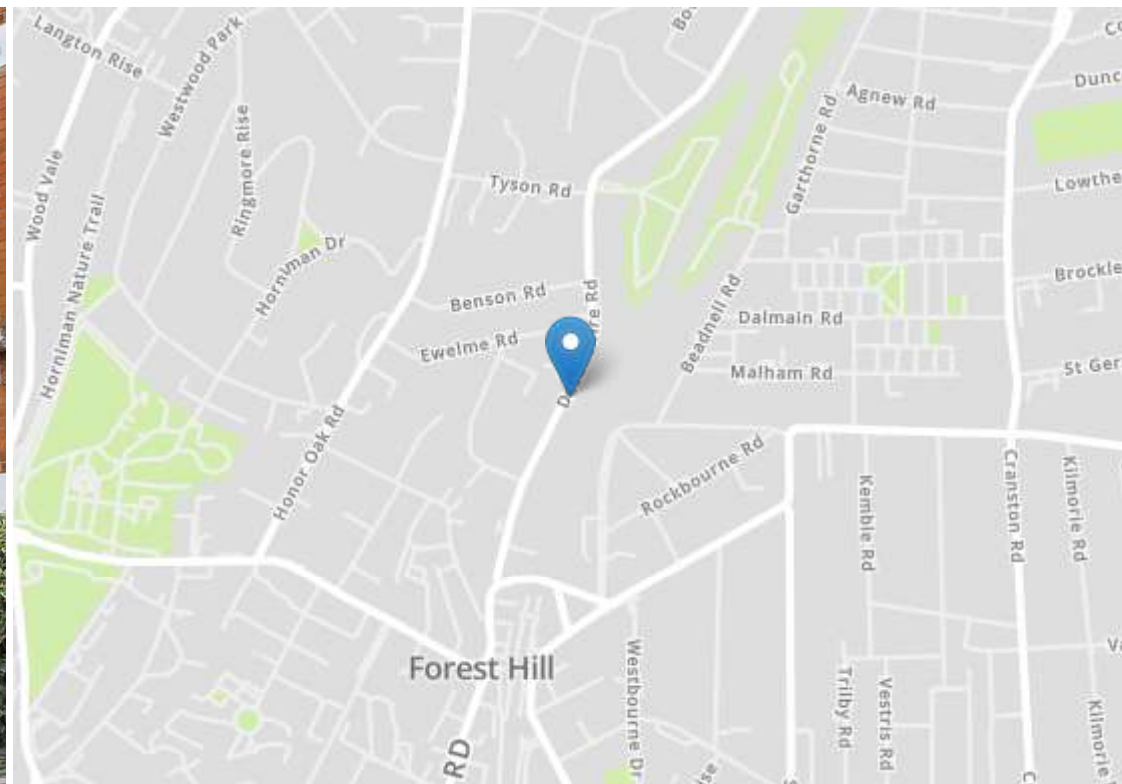
www.stanfordestates.london



APPROX 871SQFT
CONSERVATION AREA
0.5MI TO HONOR OAK PARK
STATION

LARGE COMMUNAL GARDEN
0.3MI TO FOREST HILL STATION





Energy Efficiency Rating		Current	Potential
Very energy efficient - lower running costs			
(92+)	A		
(81-91)	B		
(69-80)	C		
(55-68)	D		
(39-54)	E		
(21-38)	F		
(1-20)	G		
Not energy efficient - higher running costs			
		67	80
England, Scotland & Wales		EU Directive 2002/91/EC	



Robert Stanford Estates property particulars are produced in accordance with the Consumer Rights Act (2015) and should not be construed as a contract or offer. The contents of these property particulars are to provide a general illustration only and are inconsequential to any decisions to purchase a property. A potential buyer accepts that all representations made by these particulars are made in good faith on behalf of the seller and require verification by a buyers' legal and professional representatives prior to an exchange of contracts. We offer no guarantees for any structural component, service or appliance and while we make every effort to take accurate measurements and distances, they are illustrative only. Any reliance you place on information within these particulars is therefore strictly at your own risk.