



**£1,900 pcm**  
2 bedroom terraced house

Eltham Road  
Lee  
SE12



# Read all about it...

Welcome to this new 2-bedroom rental property - featuring two full bedrooms as well as an extra study room and a private garden, this property will be perfect for a small family or professionals looking for a new home in the desirable Hither Green area.

As you walk into the entrance hall, you will immediately notice the large Lounge / Diner, with an adjoining kitchen allowing for convenience when using this expansive space - the Study at the back of the property provides an additional space for storage or working from home.

Upstairs there are 2 ample bedrooms, served by a well-appointed bathroom; each bedroom has an abundance of natural light and storage space and has plenty of useable space for furniture / other fittings to really make the space feel like your home.

Call now to book your viewing of this property now - Don't miss out!

## GROUND FLOOR

### Entrance Hall

Fitted Carpet, Pendant lighting.

### Lounge / Diner

3.50m x 6.76m (11' 6" x 22' 2")

Wood Flooring, Flush Ceiling Lighting, Double Glazed Window, Radiator

### Kitchen

2.71m x 1.90m (8' 11" x 6' 3")

Matching Wall and Base Units, Flush Ceiling and Countertop Lighting, Single Basin Sink with Mixer Tap, Integrated Oven and Electric Hob, built in dishwasher.

### Study

3.07m x 1.55m (10' 1" x 5' 1")

Double Glazed Door to Rear, Wood Flooring, Flush Ceiling Lighting, built in washing machine.

## FIRST FLOOR

### Landing

Fitted Carpet, Pendant Lighting

### Bedroom

4.44m x 3.35m (14' 7" x 11' 0")

Fitted Carpet, Pendant Lighting, Double Glazed Casement Window

### Bedroom

2.78m x 3.36m (9' 1" x 11' 0")

Fitted Carpet, Pendant Lighting, Double Glazed Casement Window

### Bathroom

Tiled Walls & Flooring, Flush Ceiling Lighting, Bathtub and W/C, Hand Wash Basin with Vanity, Double Glazed Frosted Window

## OUTSIDE

### Garden

Brick Walls, Tiled Path to Rear Gate, Grass Area



Total Area: 66.6 m<sup>2</sup> ... 717 ft<sup>2</sup>

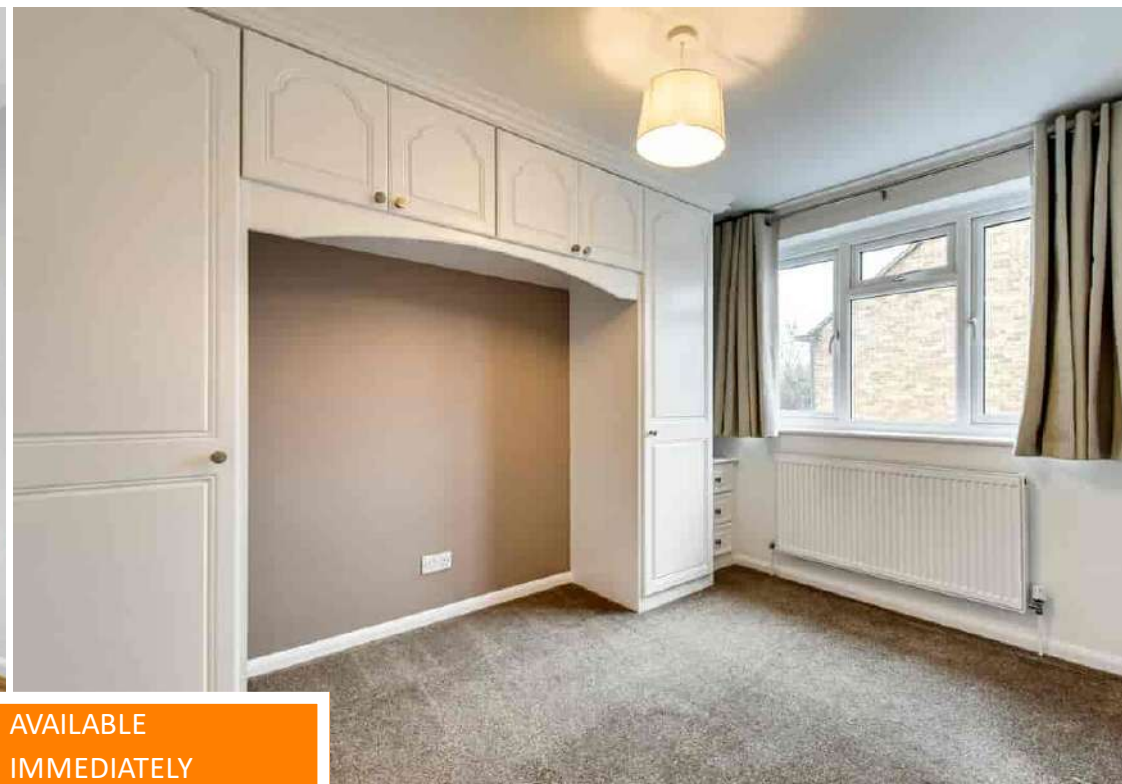
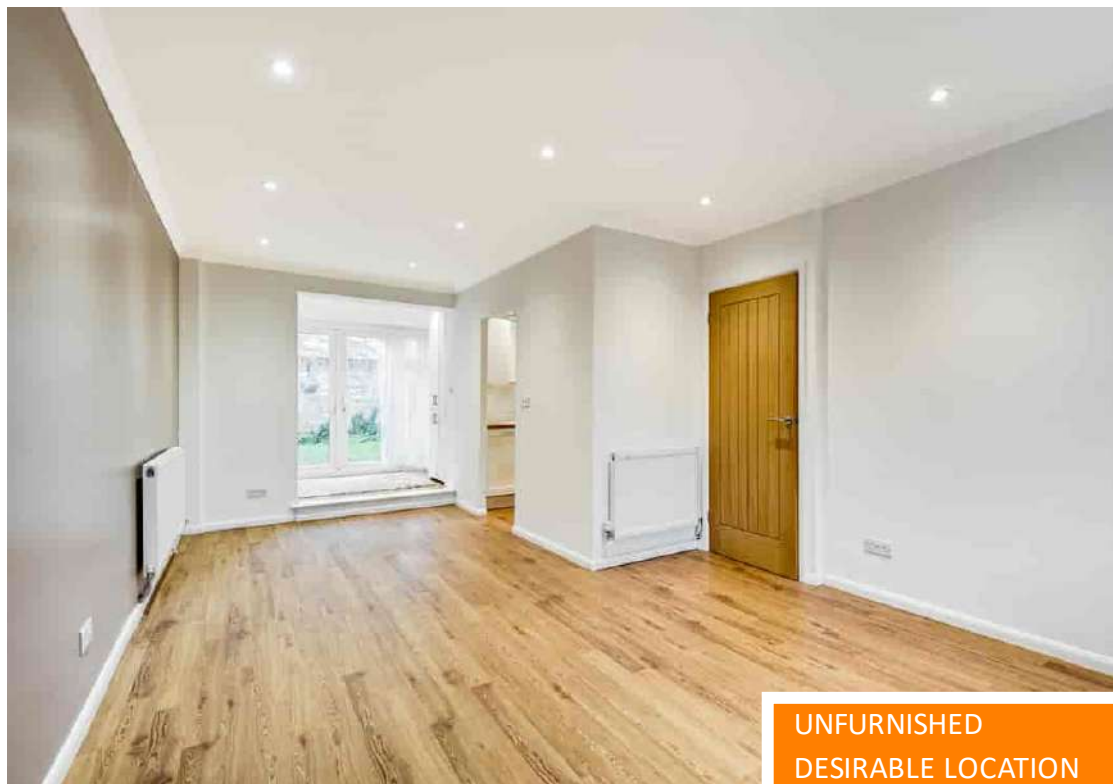
Drawn for Stanfords Sales & Lettings

This floorplan is for illustrative purposes only. Whilst every effort has been made to ensure the accuracy of the plan, the dimensions and total area are approximated only and should not be relied upon.

Like what you see?

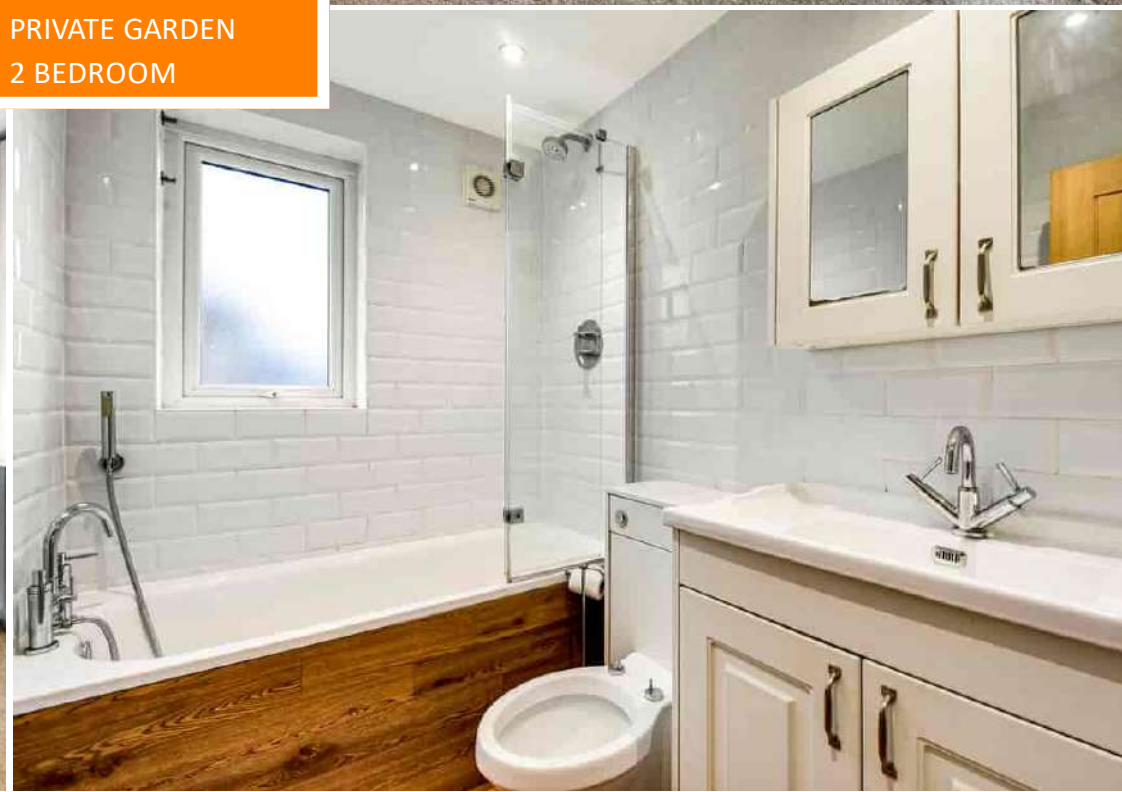
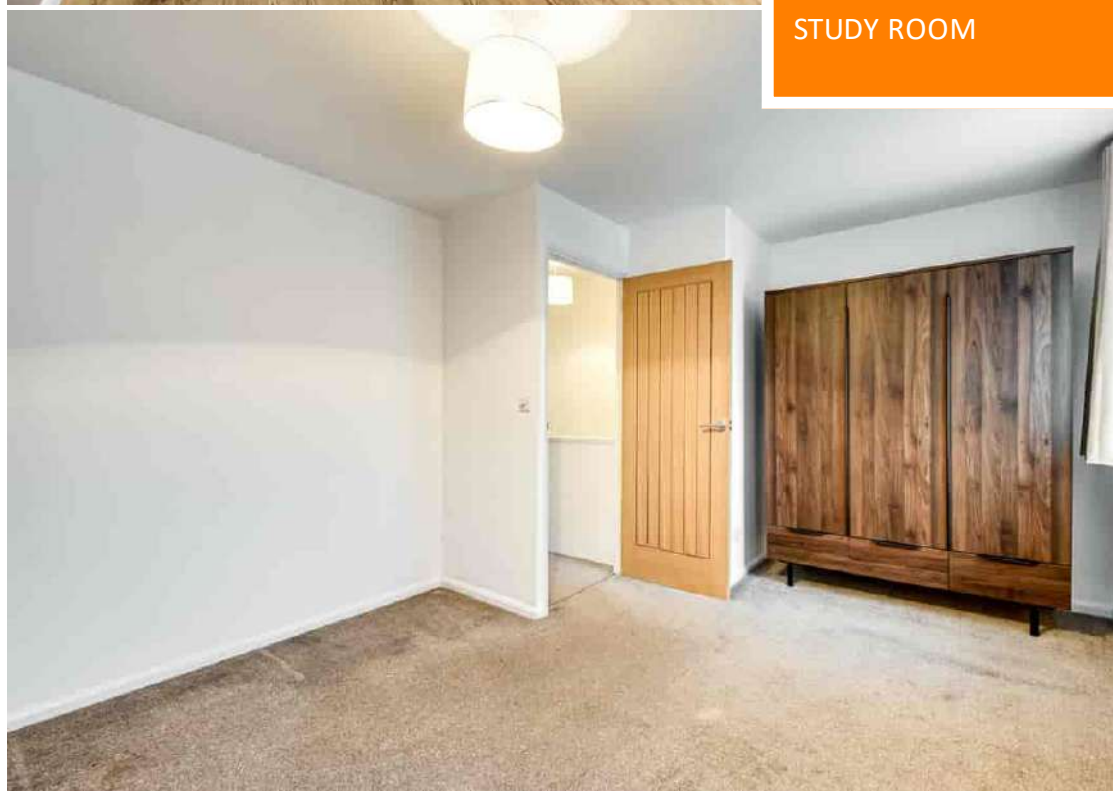
Call 020 8852 0026 or email us at [hithergreen@stanfordestates.london](mailto:hithergreen@stanfordestates.london) to arrange a viewing or request further information

[www.stanfordestates.london](http://www.stanfordestates.london)

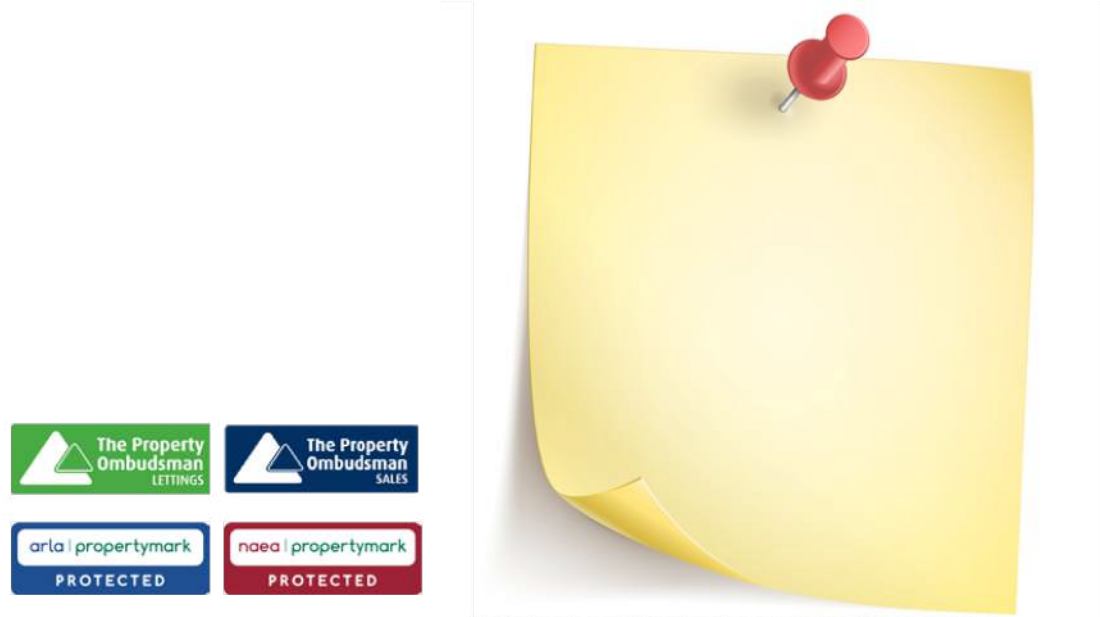
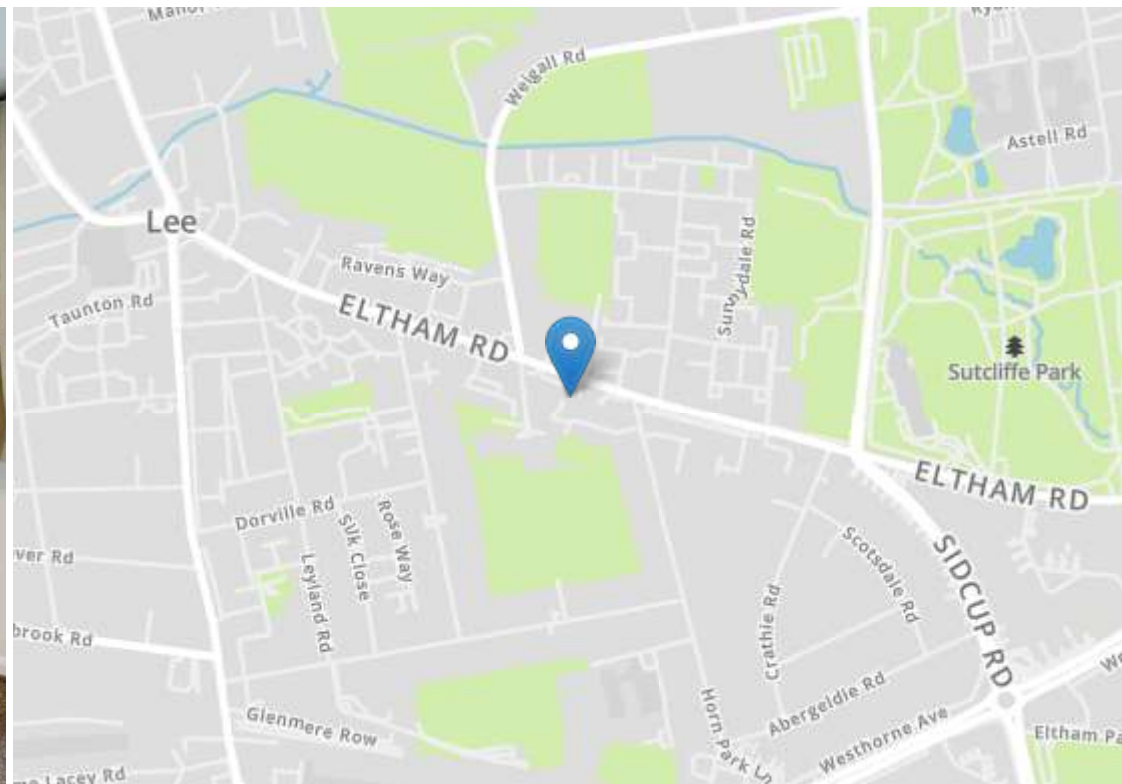


UNFURNISHED  
DESIRABLE LOCATION  
STUDY ROOM

AVAILABLE  
IMMEDIATELY  
PRIVATE GARDEN  
2 BEDROOM







Robert Stanford Estates property particulars are produced in accordance with the Consumer Rights Act (2015) and should not be construed as a contract or offer. The contents of these property particulars are to provide a general illustration only and are inconsequential to any decisions to purchase a property. A potential buyer accepts that all representations made by these particulars are made in good faith on behalf of the seller and require verification by a buyers' legal and professional representatives prior to an exchange of contracts. We offer no guarantees for any structural component, service or appliance and while we make every effort to take accurate measurements and distances, they are illustrative only. Any reliance you place on information within these particulars is therefore strictly at your own risk.