

Stanfords
— sales & lettings —



Guide Price £375,000 Share of Freehold

1 bedroom flat

Clarens Street
Catford

Read all about it...

A beautifully presented share-of freehold, one-bedroom garden flat on the borders of Catford and Forest Hill. Situated on a quiet residential road, this charming flat has been lovingly maintained by it's current owners and is an ideal property for first time buyers.

On entering the flat you're initially greeted by a spacious 25'+ open-plan kitchen/living area, flooded with natural light from the large bay window to the front and south facing window overlooking the garden to the back. Stripped original floorboards run throughout maintaining a characterful feeling. Through into the hallway is a separate WC with wash basin, storage under the stairs and a handy cupboard which houses the washing machine plus added storage above. To the rear is the bright double bedroom with fitted wardrobes and this in turn leads through to the bathroom.

Perhaps the main selling point however is the delightful South-facing garden which is private to the flat and not overlooked, catching the sun throughout the day. The flat also has the added benefit of owning the front garden too.

Clarens Street is located just 0.7 miles from the Twin Catford Stations but equally not that far at just over a mile is Forest Hill Station both offering fantastic links into Central London. There are some great local pubs and coffee shops nearby and if it's green space you're after then the Waterlink Way is a must visit.

GROUND FLOOR

Kitchen / Living Room

25' 1" x 13' 6" (7.65m x 4.11m)

Pendant ceiling light, double glazed sash bay window to front with shutters, radiator, original exposed floorboards throughout.

Kitchen:

Pendant ceiling light, single glazed sash window to rear, matching wall and base units, oak worktop with tiled splashback, ceramic butler sink, gas hob with extractor hood, electric oven, space for fridge/freezer.

Hallway

Pendant ceiling lights, storage cupboard with space for washing machine, radiator, original exposed floorboards. Doors to:

WC

Pendant ceiling light, WC, wall hung basin with vanity unit, radiator, original exposed floorboards.

Bedroom

15' 4" x 10' 0" (4.67m x 3.05m)

Pendant ceiling lights, double glazed windows to side and rear, fitted wardrobes, radiator, fitted carpet. Door to:

Bathroom

5' 6" x 5' 4" (1.68m x 1.63m)

Ceiling light, double glazed window to rear, panel enclosed bath with over shower and folding screen, pedestal basin, tiled splashback, towel radiator, tiled flooring.

OUTSIDE

Garden

Mixed paved and gravel walkway/seating areas leading to laid lawn with flower beds and shed.



Ground Floor

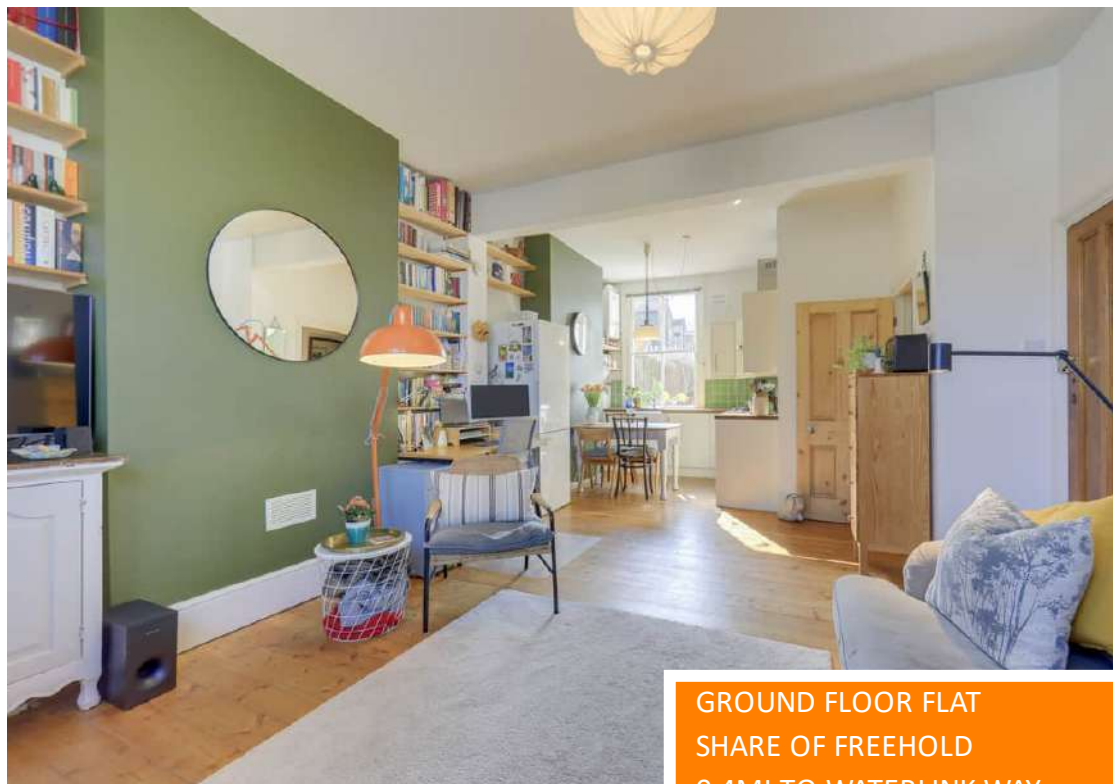
Total Area: 50.0 m² ... 538 ft²

Drawn for Stanfords Sales & Lettings
This floorplan is for illustrative purposes only. Whilst every effort has been made to ensure the accuracy of the plan, the dimensions and total area are approximated only and should not be relied upon.

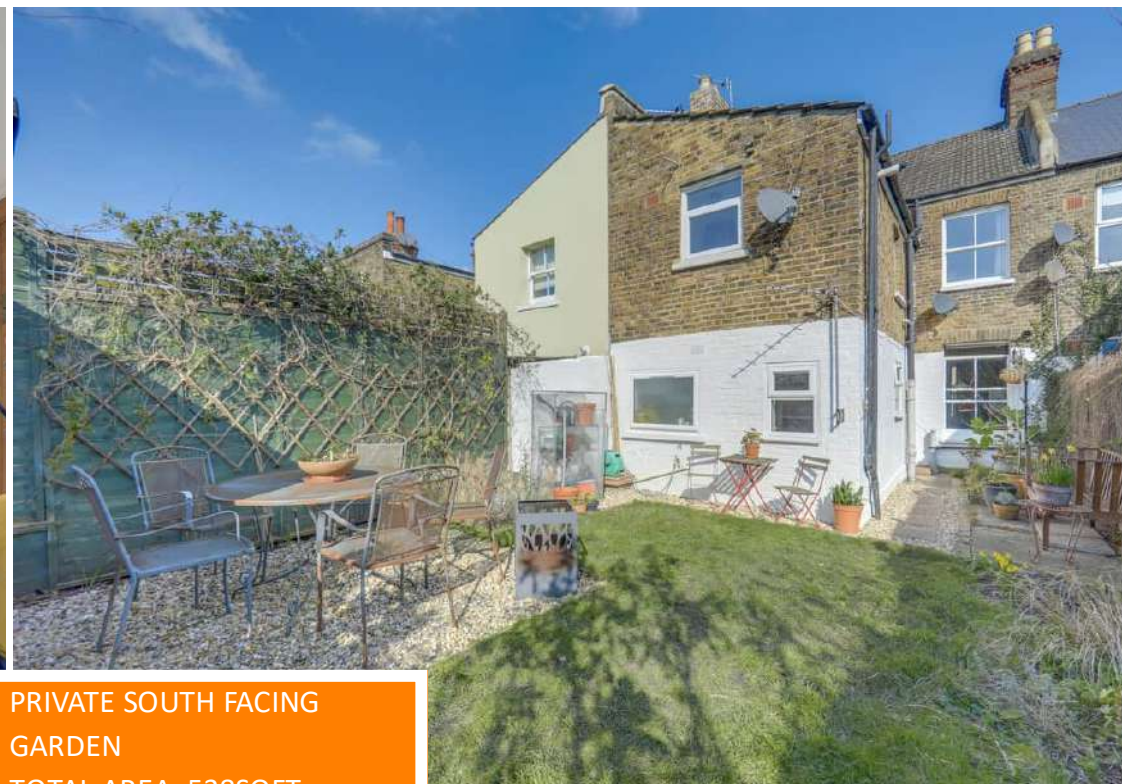
Like what you see?

Call 020 8690 3656 or email us at catford@stanfordstates.london
to arrange a viewing or request further information

www.stanfordstates.london

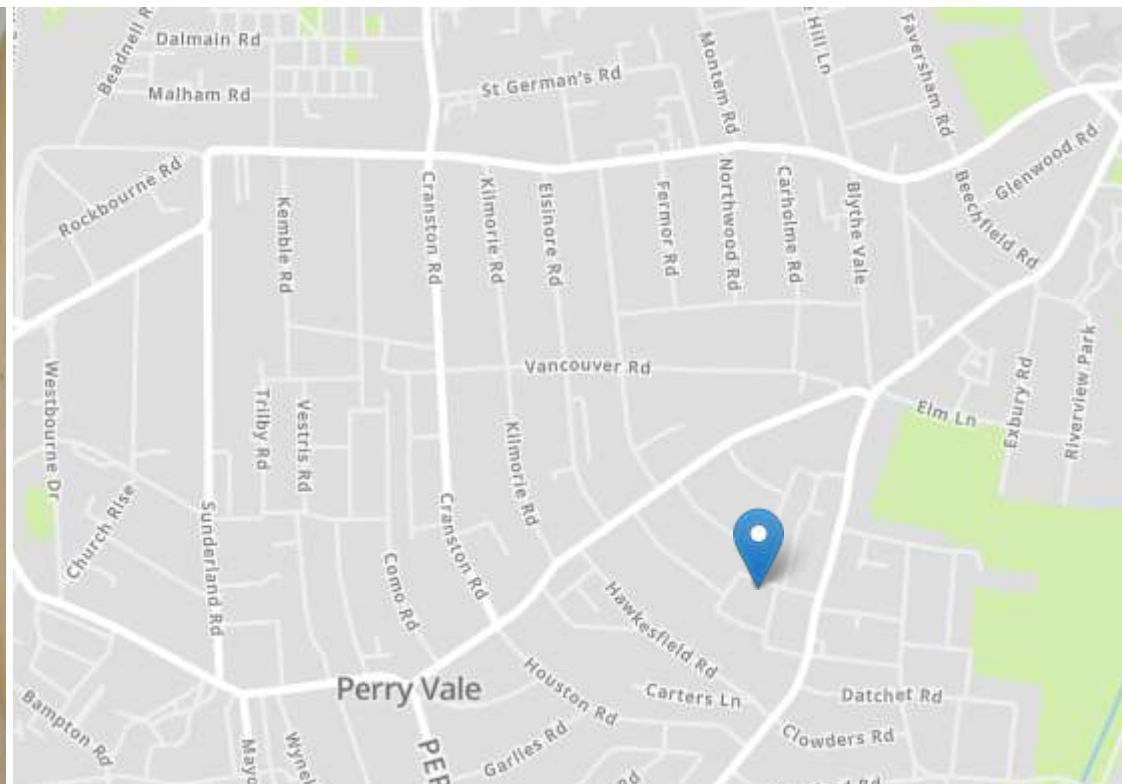


GROUND FLOOR FLAT
SHARE OF FREEHOLD
0.4MI TO WATERLINK WAY



PRIVATE SOUTH FACING
GARDEN
TOTAL AREA: 538SQFT.
0.7MI TO TWIN CATFORD
STATIONS





Energy Efficiency Rating		Current	Potential
Very energy efficient - lower running costs			
(92+)	A		
(81-91)	B		
(69-80)	C		
(55-68)	D	65	78
(39-54)	E		
(21-38)	F		
(1-20)	G		
Not energy efficient - higher running costs			
England, Scotland & Wales		EU Directive 2002/91/EC	



Robert Stanford Estates property particulars are produced in accordance with the Consumer Rights Act (2015) and should not be construed as a contract or offer. The contents of these property particulars are to provide a general illustration only and are inconsequential to any decisions to purchase a property. A potential buyer accepts that all representations made by these particulars are made in good faith on behalf of the seller and require verification by a buyers' legal and professional representatives prior to an exchange of contracts. We offer no guarantees for any structural component, service or appliance and while we make every effort to take accurate measurements and distances, they are illustrative only. Any reliance you place on information within these particulars is therefore strictly at your own risk.