

Stanfords

— sales & lettings —



£365,000 Leasehold

2 bedroom flat

Sydenham Hill

Sydenham

Read all about it...

This bright and spacious apartment is situated on the second floor of this 1960's building nestled away in upper Sydenham, just a short distance from Sydenham Wells Park and Sydenham Hill Station.

The space offers comfortable and contemporary living featuring a spacious enough lounge for both living and dining room furniture, a modern kitchen with ample storage, integrated dishwasher and worktop space, 2 bedrooms, and a functional 3-piece shower room. There is also useful built-in storage space in the entrance hall. Externally, the landscaped communal gardens wrap around the building and lead to a private garage.

Upper Sydenham offers a serene residential atmosphere with easy access to green spaces like Crystal Palace Park and Mayow Park. Residents enjoy excellent transport links via Sydenham Hill Station, connecting to central London. The area boasts a vibrant local hub in Kirkdale Village, providing essential amenities and charming cafes adding additional appeal to anyone looking for their first home or climbing the property ladder.

Tenure: Leasehold (90 years remaining) | Service Charge: £165.60pm | Ground Rent: £350pa

SECOND FLOOR

Hallway

Pendant ceiling lights, storage cupboard, radiator, tiled flooring.

Lounge

05.63m x 3.73m (18' 6" x 12' 3")

Pendant ceiling lights, double-glazed windows, radiator, stripped hardwood floorboards.

Kitchen

2.25m x 2.07m (7' 5" x 6' 9")

Pendant ceiling light, double-glazed window, wood top surfaces, electric oven, gas hob with overhead fan extractor, stainless steel sink with drainer, tiled flooring.

Bedroom

4.59m x 3.00m (15' 1" x 9' 10")

Pendant ceiling light, double-glazed window, radiator, stripped hardwood floorboards.

Bedroom

3.73m x 2.13m (12' 3" x 7' 0")

Pendant ceiling light, double-glazed window, radiator, stripped hardwood floorboards.

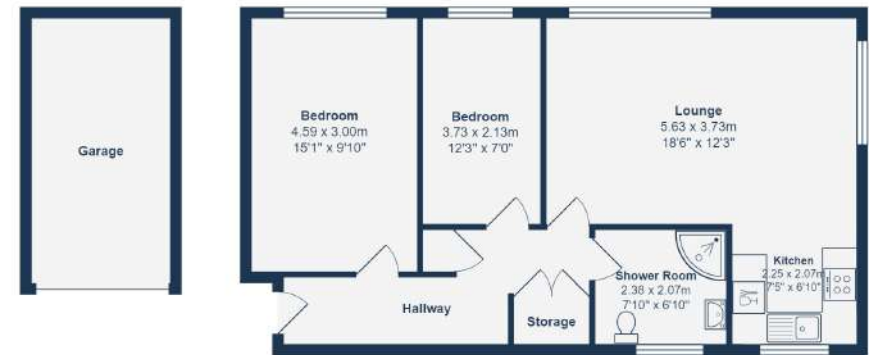
Shower Room

2.38m x 2.07m (7' 10" x 6' 9")

Circular ceiling light, frosted window, walk-in shower with glass divider, basin sink unit, heated towel rail, tiled walls & flooring.

OUTSIDE

Garage



Second Floor

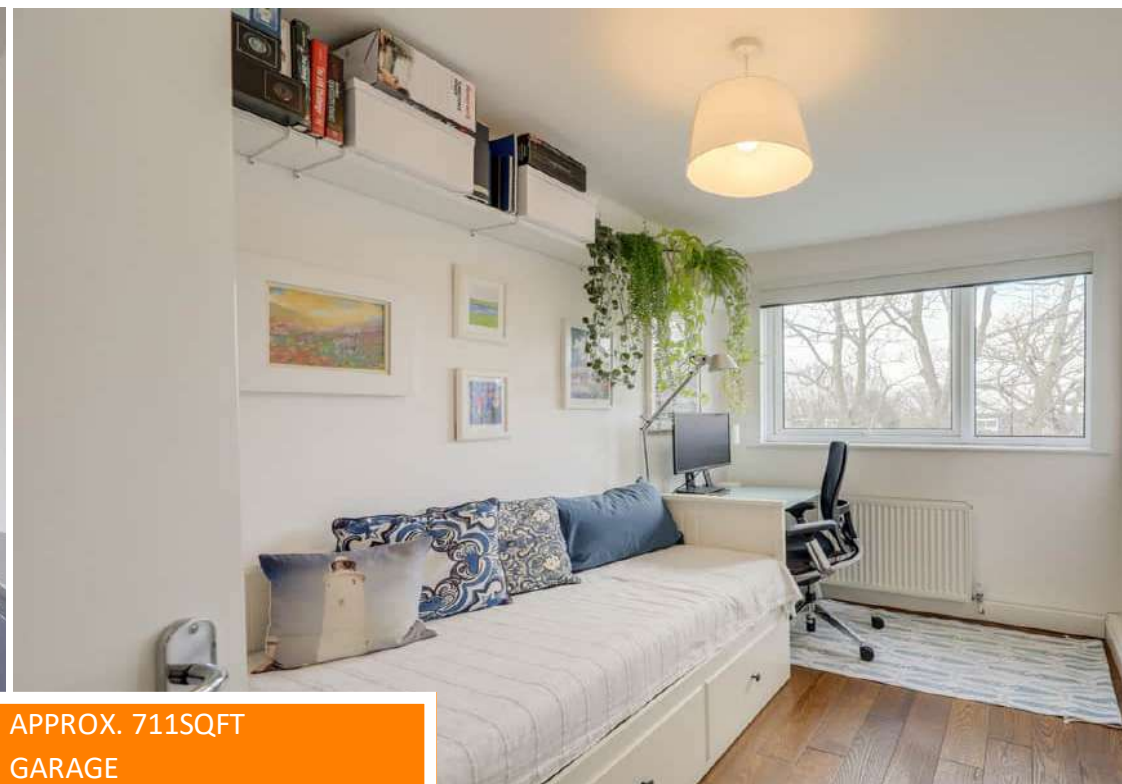
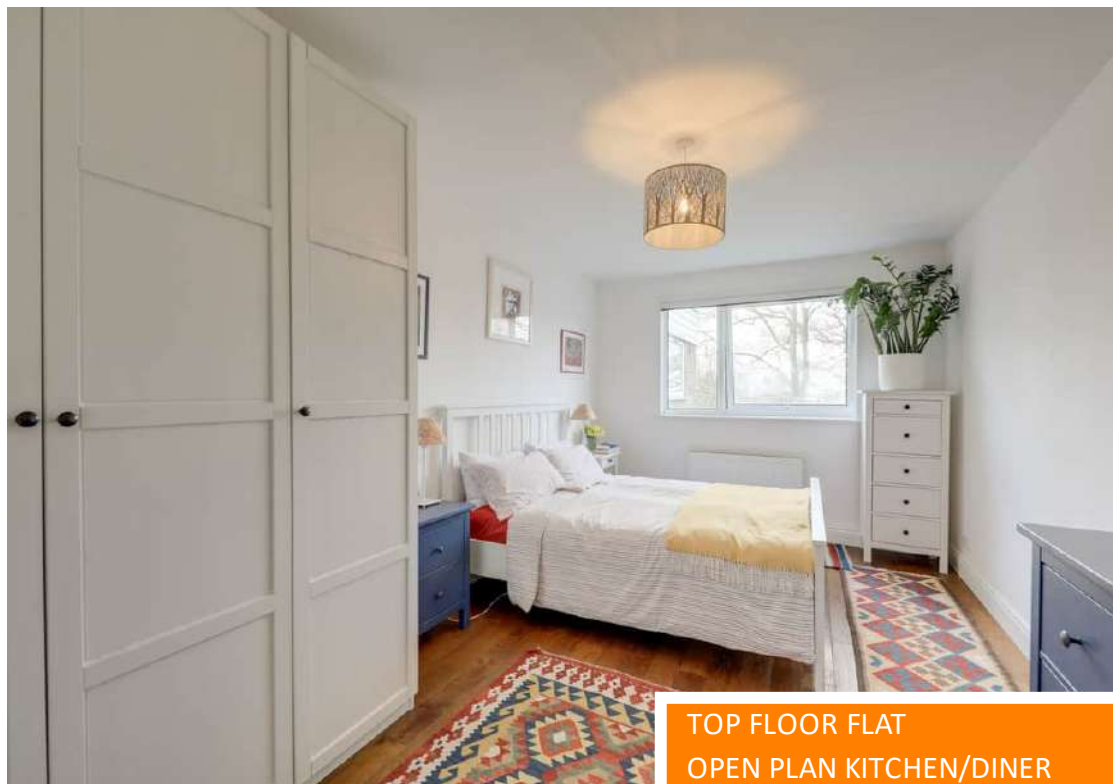
Total Area: 66.0 m² ... 711 ft² (excluding garage)

Drawn for Stanfords Sales & Lettings
This floor plan is for illustrative purposes only. Whilst every effort has been made to ensure the accuracy of the plan, the dimensions and total area are approximated only and should not be relied upon.

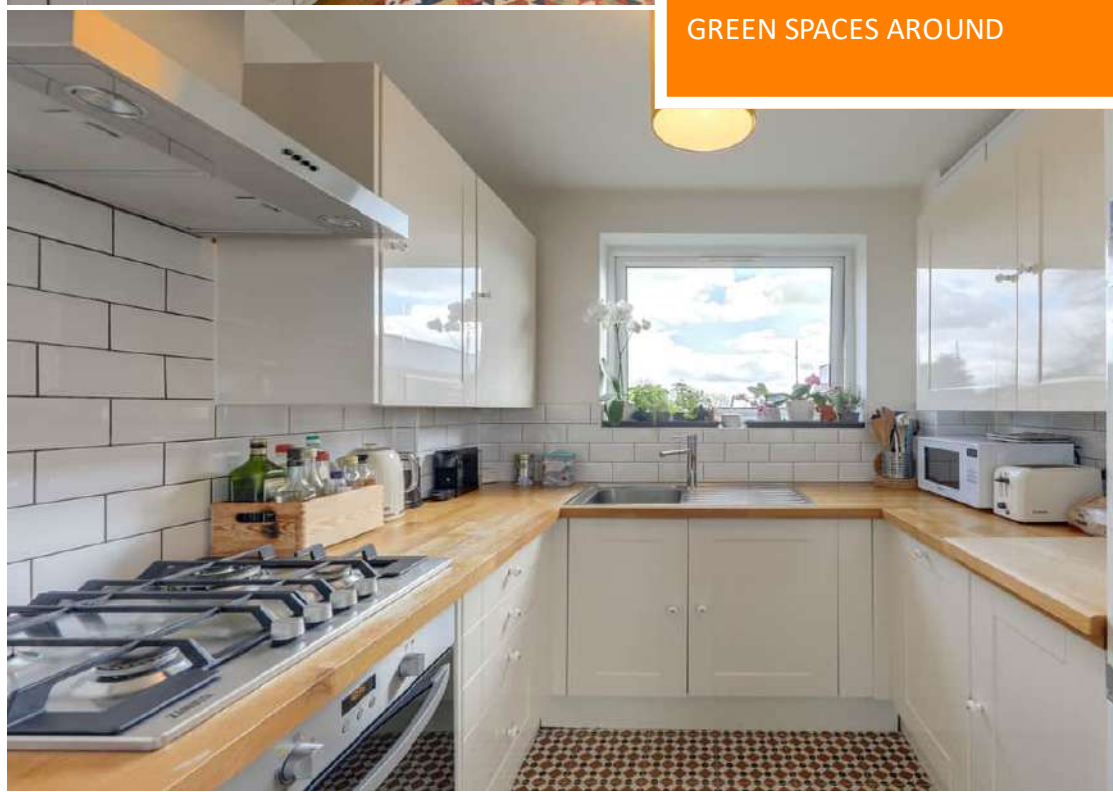
Like what you see?

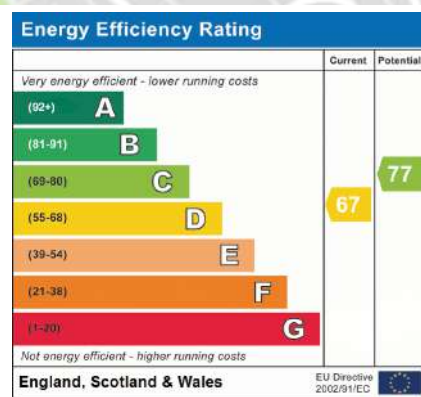
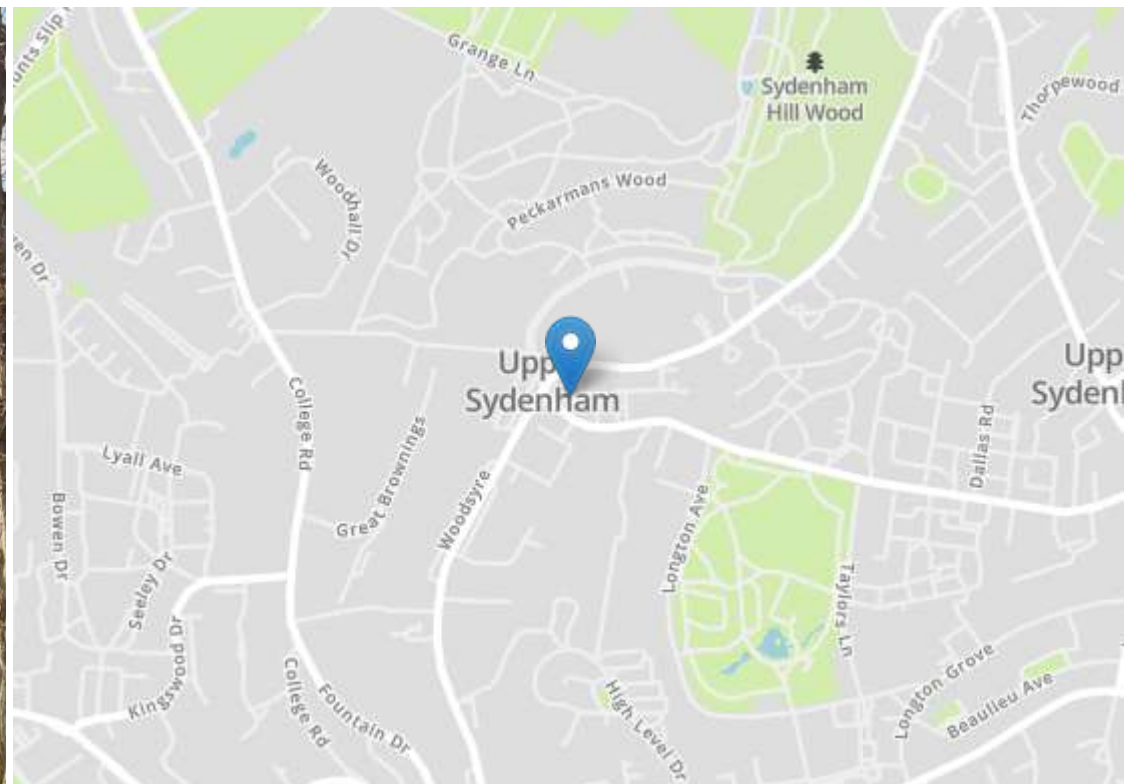
Call 020 8699 6778 or email us at foresthill@stanfordestates.london to arrange a viewing or request further information

www.stanfordestates.london



TOP FLOOR FLAT
OPEN PLAN KITCHEN/DINER
GREEN SPACES AROUND
APPROX. 711SQFT
GARAGE
0.3MI TO SYDENHAM HILL
STATION





Robert Stanford Estates property particulars are produced in accordance with the Consumer Rights Act (2015) and should not be construed as a contract or offer. The contents of these property particulars are to provide a general illustration only and are inconsequential to any decisions to purchase a property. A potential buyer accepts that all representations made by these particulars are made in good faith on behalf of the seller and require verification by a buyers' legal and professional representatives prior to an exchange of contracts. We offer no guarantees for any structural component, service or appliance and while we make every effort to take accurate measurements and distances, they are illustrative only. Any reliance you place on information within these particulars is therefore strictly at your own risk.