



£450,000 Leasehold
3 bedroom maisonette

Haseley End
Forest Hill

Read all about it...

This bright and spacious split-level maisonette, tucked away in a quiet cul-de-sac, is ideally situated near Forest Hill and Honor Oak Stations, offering frequent National Rail, London Overground, and bus services to Central London and beyond. Just moments from the vibrant Forest Hill Town Centre, you'll find a diverse selection of shops, supermarkets, and exciting dining options. Popular among young families, the area is well-served by excellent nurseries and schools, including Horniman Primary School. The renowned Horniman Museum and Gardens, along with a lively Sunday market featuring independent and local producers, are also nearby.

The property benefits from a private front garden and entrance, leading to a welcoming hall that opens into a large lounge and dining room with access to a southeast-facing balcony, plus a separate kitchen on the ground floor. Upstairs, there are two generously sized bedrooms with built-in storage, a third smaller bedroom, and a sleek, contemporary bathroom. Additional features include a large communal garden and shared off-street parking.

Tenure: Leasehold (170+ years remaining) | **Service Charge:** Approx £100pm | **Ground Rent:** £10pa | **Council Tax:** Lewisham band C

**SPLIT-LEVEL MAISONETTE
AMPLE STORAGE SPACE
GREAT TRANSPORT LINKS**

**PRIVATE BALCONY & FRONT
GARDEN
COMMUNAL GARDEN AND
PARKING
APPROX 909SQFT.**



Like what you see?

Call **020 8699 6778** or email us at foresthill@stanfordestates.london
to arrange a viewing or request further information



GROUND FLOOR

Entrance Hall

12' 8" x 5' 8" (3.86m x 1.73m)

Pendant ceiling light, storage cupboard, fitted carpet.

Kitchen

10' 0" x 7' 9" (3.05m x 2.36m)

Double-glazed windows, track ceiling light, fitted kitchen unit, sink with mixer tap and drainer, oven with grill and electric hob, plumbing for washing machine, combi boiler, storage cupboards, tile flooring.

Lounge

18' 10" x 10' 4" (5.74m x 3.15m)

Double-glazed windows and door to balcony, alcove cabinet and shelving, radiator, fitted carpet.

Dining Room

9' 4" x 5' 8" (2.84m x 1.73m)

Double-glazed windows and door to balcony, pendant ceiling light, radiator, fitted carpet,

FIRST FLOOR

Landing

10' 3" x 7' 1" (3.12m x 2.16m)

Pendant ceiling light, storage cupboard, fitted carpet.

Bedroom

13' 6" x 8' 10" (4.11m x 2.69m)

Double-glazed windows, pendant ceiling light, storage cupboard, radiator, fitted carpet.

Bedroom

12' 11" x 8' 10" (3.94m x 2.69m)

Double-glazed windows, pendant ceiling light, storage cupboard, radiator, fitted carpet.

Bathroom

8' 4" x 7' 1" (2.54m x 2.16m)

Double-glazed windows, inset ceiling spotlights, bathtub with shower and screen, sink on vanity unit, WC, heated towel rail, tile flooring.

Bedroom

9' 11" x 7' 1" (3.02m x 2.16m)

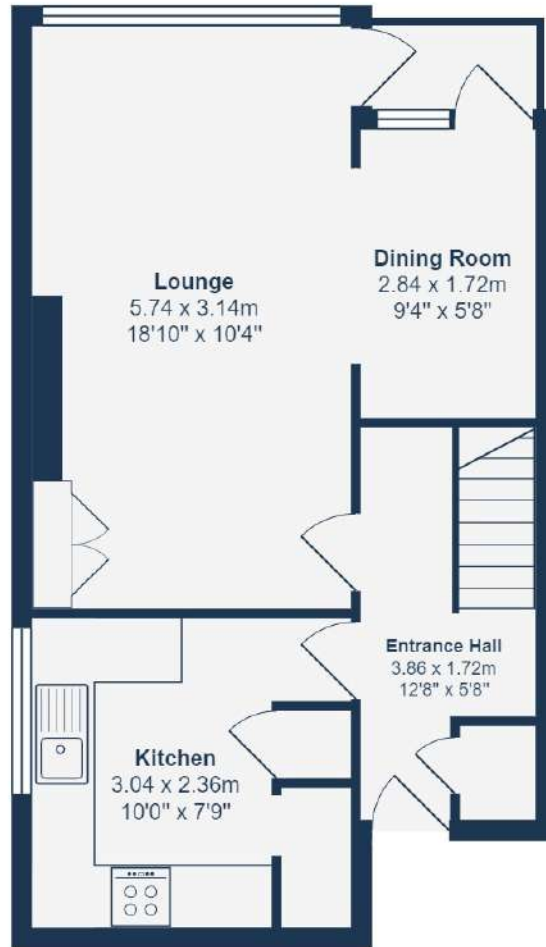
Double-glazed window, pendant ceiling light, radiator, fitted carpet.

OUTSIDE

Balcony

Front Garden

Communal Garden



Ground Floor



First Floor

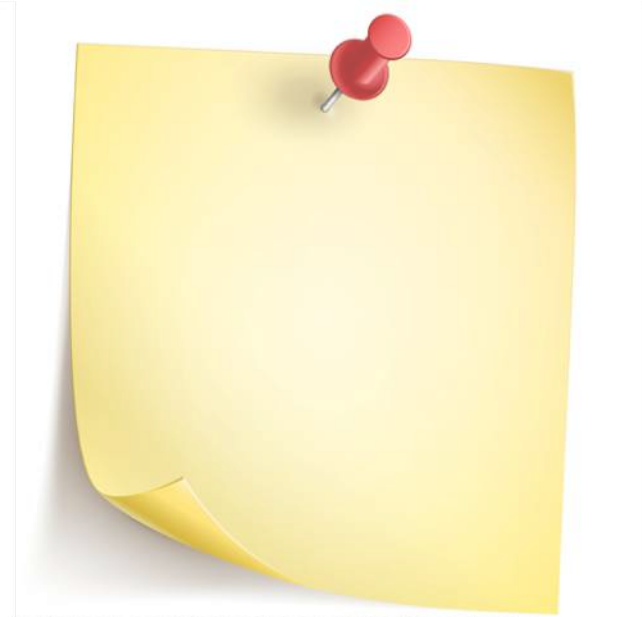
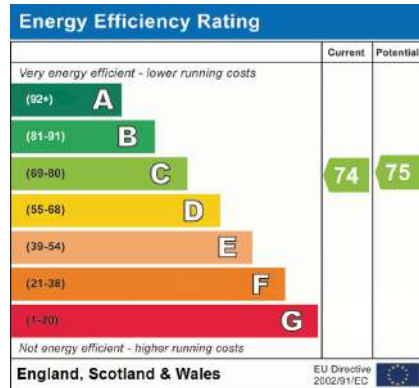
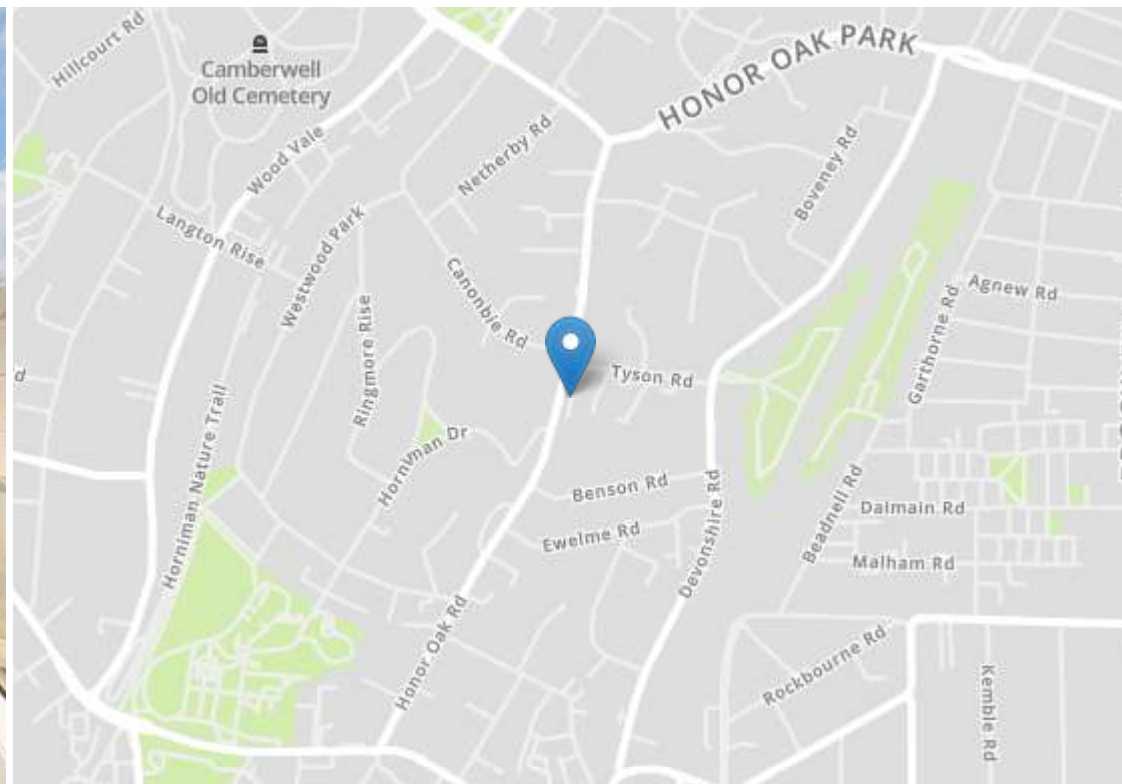
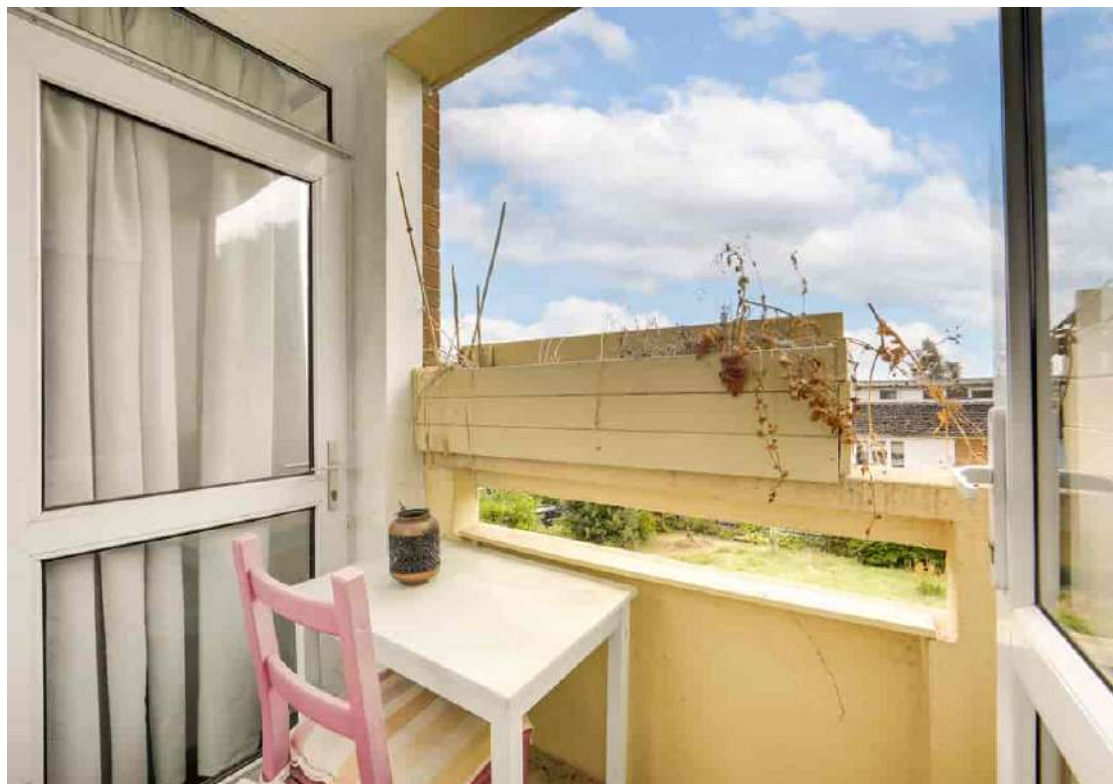
Total Area: 84.4 m² ... 909 ft² (excluding balcony)

Drawn for Stanfords Sales & Lettings

This floorplan is for illustrative purposes only. Whilst every effort has been made to ensure the accuracy of the plan, the dimensions and total area are approximated only and should not be relied upon.







Robert Stanford Estates property particulars are produced in accordance with the Consumer Rights Act (2015) and should not be construed as a contract or offer. The contents of these property particulars are to provide a general illustration only and are inconsequential to any decisions to purchase a property. A potential buyer accepts that all representations made by these particulars are made in good faith on behalf of the seller and require verification by a buyers' legal and professional representatives prior to an exchange of contracts. We offer no guarantees for any structural component, service or appliance and while we make every effort to take accurate measurements and distances, they are illustrative only. Any reliance you place on information within these particulars is therefore strictly at your own risk.