

Stanfords

— sales & lettings —



£725,000 Freehold
3 bedroom terraced house

Cranston Road
Forest Hill

Read all about it...

This spacious and versatile terraced house, offered to the market with no onward chain, presents an exciting opportunity for buyers seeking a move-in-ready home in a prime location.

Beautifully presented throughout, the property greets you with a bright entrance hall that opens to a light-filled lounge and a spacious dining room, seamlessly connected to a modern kitchen—creating an ideal setting for entertaining. The ground floor also features an additional room, perfect as a home office, along with a convenient downstairs WC.

On the first floor, you'll find two generously sized double bedrooms, a family bathroom, and a smaller room currently used as a walk-in wardrobe. On the second floor, there is a spacious loft room which is used as a third double bedroom, complemented by a light-filled landing with space for a desk or dressing table, and ample storage within the eaves.

Stepping outside, the west-facing garden has been lovingly maintained and features a paved patio—perfect for summer evenings—and a lush lawn with plenty of room for play.

This property is ideally suited for those seeking quick transport links and a vibrant local community. Located within a mile of Forest Hill and Catford Twin Stations, residents benefit from frequent London Overground, National Rail, and bus services into Central London and beyond. The area is rich in amenities, with GP and dental practices within walking distance, as well as a diverse selection of shops, supermarkets, and exciting places to eat and drink. Cranston Road is known for its family-friendly atmosphere, with well-regarded local nurseries and schools nearby, and plenty of green spaces, including Mayow Park and the scenic Waterlink Way, a popular route for walking and cycling.

Tenure: Freehold | **Council Tax:** Lewisham band D

**CHAIN FREE
MODERN KITCHEN &
BATHROOM
LOFT ROOM**

**FANTASTIC CONDITION
THROUGHOUT
WEST FACING GARDEN
APPROX 1,314SQFT.**



Like what you see?

Call **020 8699 6778** or email us at foresthill@stanfordstates.london
to arrange a viewing or request further information



GROUND FLOOR

Entrance Hall

13' 7" x 5' 7" (4.14m x 1.70m)

Pendant ceiling lights, radiator, understairs cupboard, laminate wood flooring.

Lounge

15' 4" x 12' 2" (4.67m x 3.71m)

Double-glazed windows, pendant ceiling light, radiator, laminate wood flooring.

Dining Room

13' 1" x 10' 9" (3.99m x 3.28m)

Double-glazed doors to kitchen, pendant ceiling light, radiator, laminate wood flooring.

Kitchen

10' 3" x 9' 7" (3.12m x 2.92m)

Double-glazed window and door to garden, inset ceiling spotlights, fitted kitchen units, 1.5 bowl sink with mixer tap and drainer, integrated oven, gas hob and extractor hood, combi boiler, plumbing for washing machine and dishwasher, laminate wood flooring.

Study

9' 11" x 7' 0" (3.02m x 2.13m)

Double-glazed window, pendant ceiling light, radiator, fitted carpet.

WC

4' 6" x 2' 3" (1.37m x 0.69m)

Wall light, washbasin on vanity unit, WC, laminate wood flooring.

FIRST FLOOR

Landing

10' 10" x 5' 11" (3.30m x 1.80m)

Pendant ceiling lights, fitted carpet.

Bedroom

12' 10" x 11' 10" (3.91m x 3.61m)

Double-glazed windows, pendant ceiling light, radiator, fitted carpet.

Bedroom

13' 1" x 11' 5" (3.99m x 3.48m)

Double-glazed windows, pendant ceiling light, radiator, fitted carpet.

Dressing Room

6' 0" x 5' 11" (1.83m x 1.80m)

Double-glazed windows, pendant ceiling light, radiator, fitted carpet.

Bathroom

8' 9" x 6' 3" (2.67m x 1.91m)

Double-glazed window, ceiling light, bathtub with shower and screen, washbasin on vanity unit, WC, heated towel rail, tile flooring.

SECOND FLOOR

Landing

17' 1" x 5' 8" (5.21m x 1.73m)

Velux roof windows, ceiling light, eaves storage, fitted carpet.

Bedroom

12' 9" x 10' 5" (3.89m x 3.17m)

Velux roof window, pendant ceiling light, radiator, eaves storage, fitted carpet.

OUTSIDE

Garden

Paved patio leading to artificial lawn and mature plant borders.



Ground Floor
Area: 56.0 m² ... 602 ft²



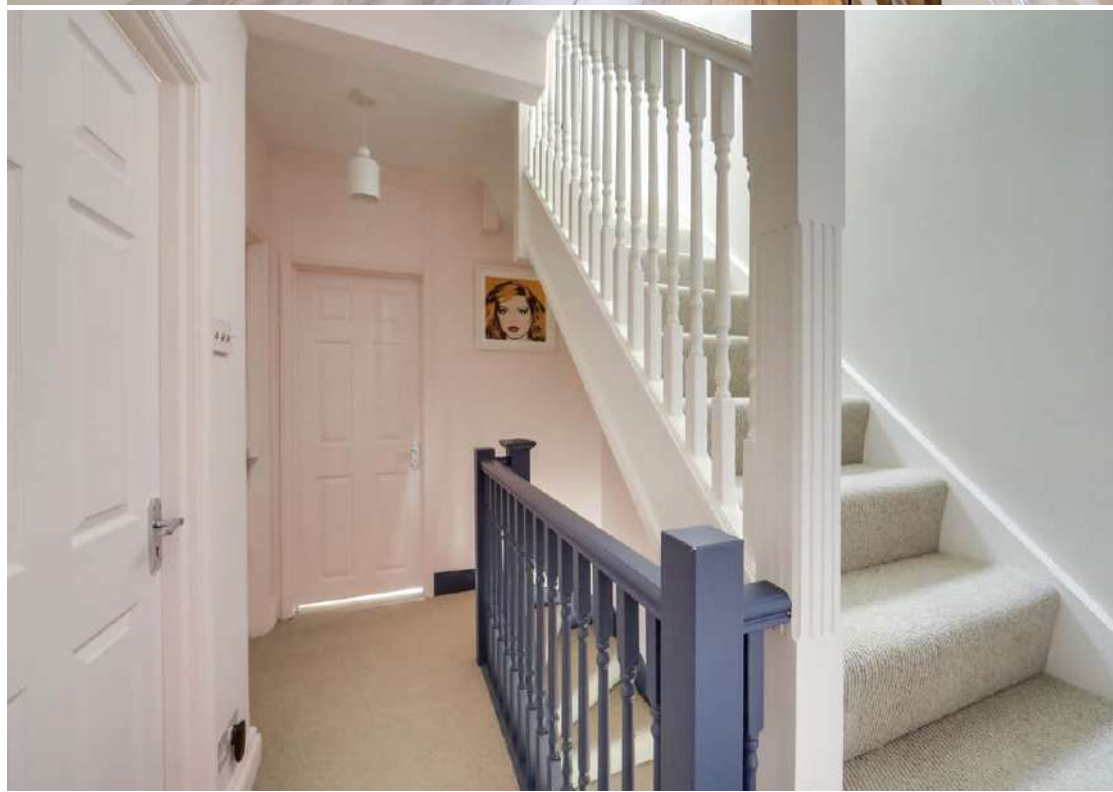
First Floor
Area: 45.2 m² ... 487 ft²



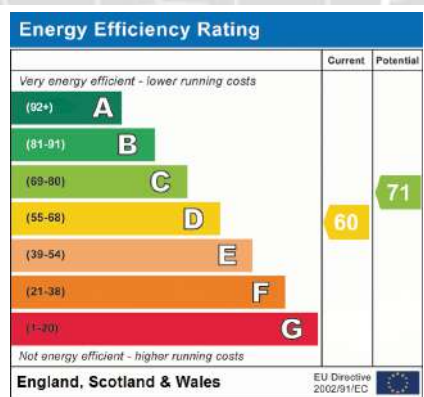
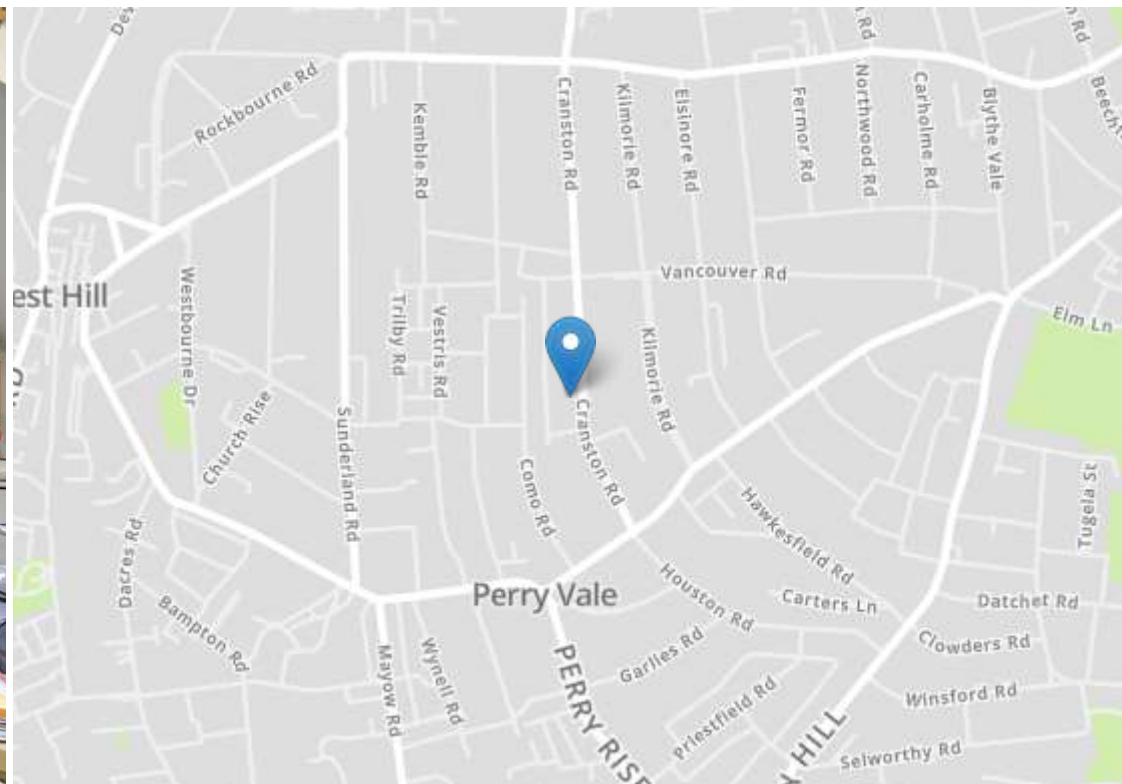
Second Floor
Area: 20.9 m² ... 225 ft²

Total Area: 122.1 m² ... 1314 ft² (excluding eaves storage)

Drawn for Stanfords Sales & Lettings
This floorplan is for illustrative purposes only. Whilst every effort has been made to ensure the accuracy of the plan, the dimensions and total area are approximated only and should not be relied upon.







Robert Stanford Estates property particulars are produced in accordance with the Consumer Rights Act (2015) and should not be construed as a contract or offer. The contents of these property particulars are to provide a general illustration only and are inconsequential to any decisions to purchase a property. A potential buyer accepts that all representations made by these particulars are made in good faith on behalf of the seller and require verification by a buyers' legal and professional representatives prior to an exchange of contracts. We offer no guarantees for any structural component, service or appliance and while we make every effort to take accurate measurements and distances, they are illustrative only. Any reliance you place on information within these particulars is therefore strictly at your own risk.