



£300,000 Share of Freehold
1 bedroom flat

Flat G, 105 Honor Oak Park
Forest Hill

Read all about it...

Offered with no onward chain, this spacious top-floor one-bedroom flat is set within a charming period mansion conversion. The property features a bright lounge, bathed in natural light from south-facing sash windows, a generously sized double bedroom, a modern kitchen, and a well-appointed bathroom.

Ideally located near Honor Oak Park Station, the flat benefits from excellent transport links via National Rail, London Overground, and local buses, ensuring easy access to Central London and beyond. The vibrant area offers a variety of independent shops, supermarkets, and enticing places to eat and drink, all within walking distance. Nearby green spaces and the renowned Horniman Museum and Gardens provide a perfect setting for leisure, relaxation, and a popular Sunday market featuring local and artisanal producers, adding to the charm of this sought-after location.

Tenure: Share of Freehold (96 years remaining on lease) | **Council Tax:** Lewisham band C

TOP FLOOR

Reception Room

15' 3" x 15' 1" (4.65m x 4.60m)

Sash window, inset ceiling spotlights, built-in bar table, radiator, laminate wood flooring.

Kitchen

12' 4" x 7' 0" (3.76m x 2.13m)

Sash window, inset ceiling spotlights, fitted kitchen units, 1.5 bowl sink with mixer tap and drainer, plumbing for washing machine, oven with gas hob and extractor hood, cupboard housing Valiant boiler (installed 2021), vinyl flooring.

Bedroom

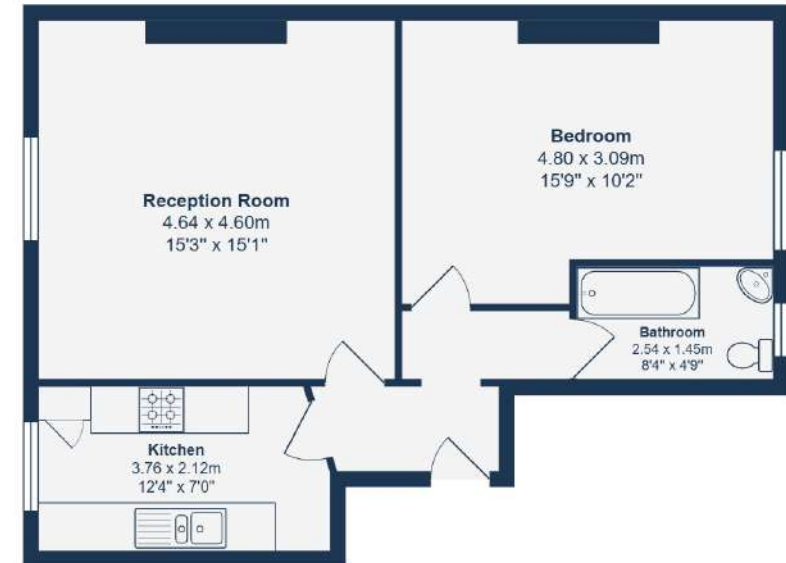
15' 9" x 10' 2" (4.80m x 3.10m)

Sash window, inset ceiling spotlights, radiator, laminate wood flooring.

Bathroom

8' 4" x 4' 9" (2.54m x 1.45m)

Window, inset ceiling spotlights, bathtub with shower and screen, washbasin, WC, radiator, tile flooring.



Top Floor

Total Area: 55.0 m² ... 592 ft²

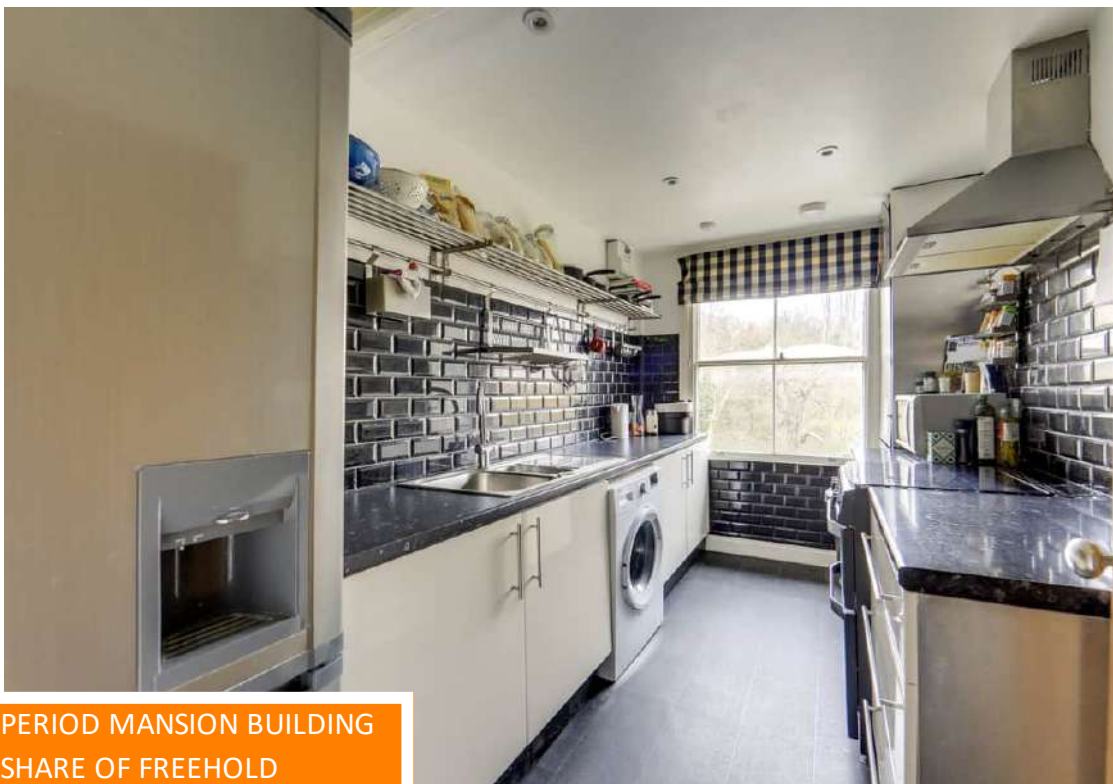
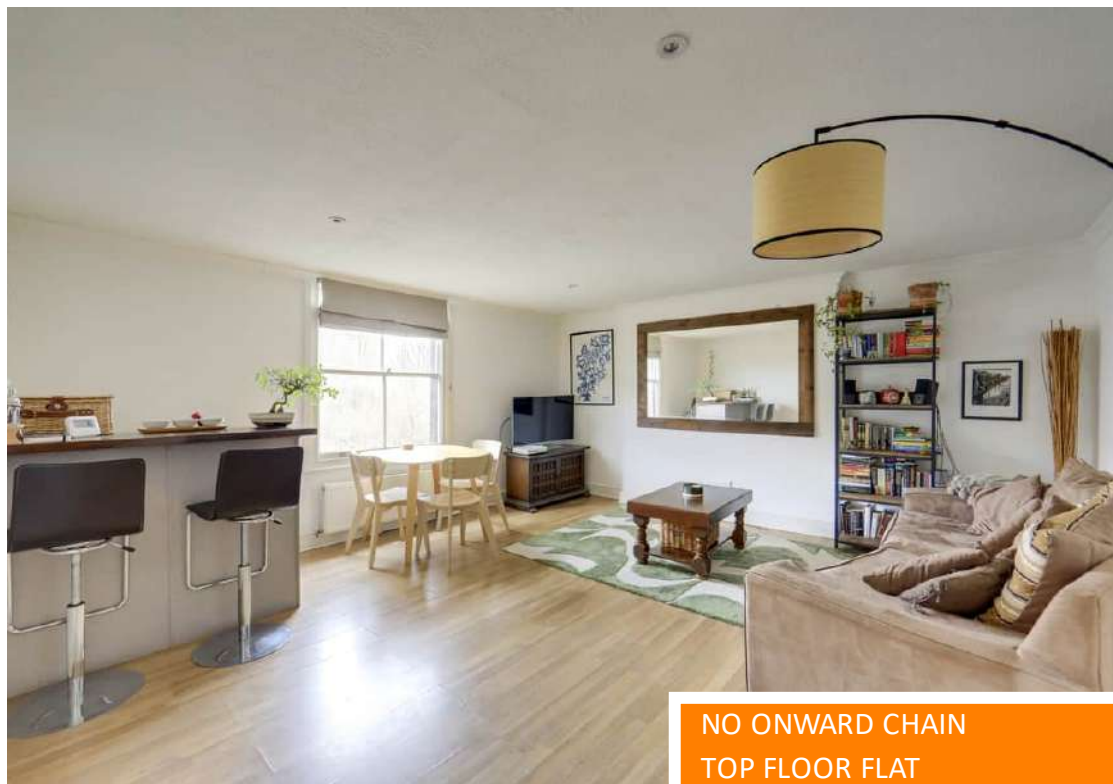
Drawn for Stanfords Sales & Lettings

This floorplan is for illustrative purposes only. Whilst every effort has been made to ensure the accuracy of the plan, the dimensions and total area are approximated only and should not be relied upon.

Like what you see?

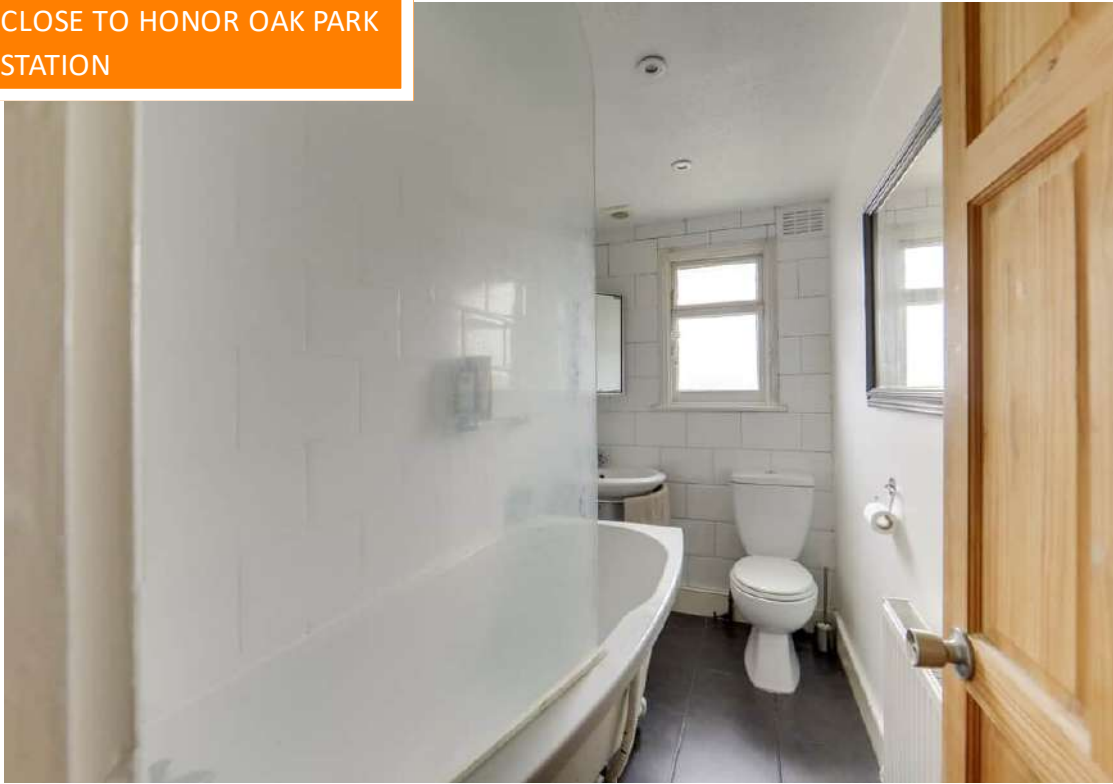
Call 020 8699 6778 or email us at foresthill@stanfordstates.london to arrange a viewing or request further information

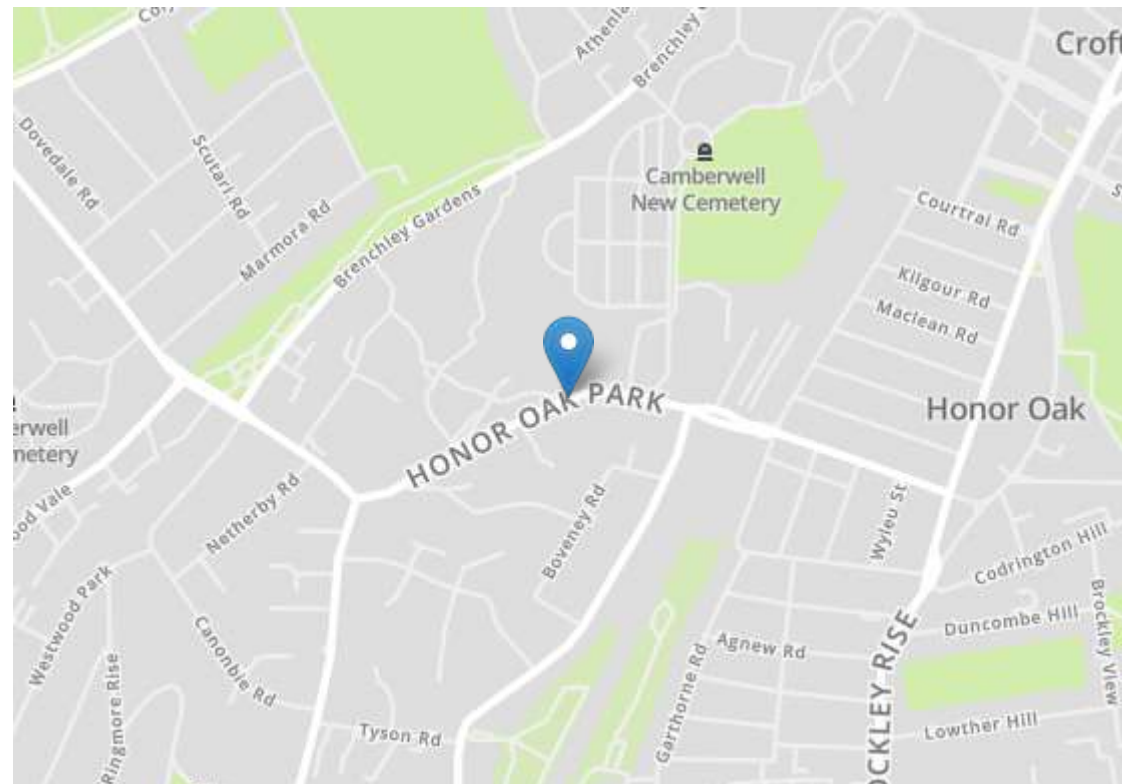
www.stanfordstates.london



NO ONWARD CHAIN
TOP FLOOR FLAT
TOTAL AREA - 592SQFT.

PERIOD MANSION BUILDING
SHARE OF FREEHOLD
CLOSE TO HONOR OAK PARK
STATION





Robert Stanford Estates property particulars are produced in accordance with the Consumer Rights Act (2015) and should not be construed as a contract or offer. The contents of these property particulars are to provide a general illustration only and are inconsequential to any decisions to purchase a property. A potential buyer accepts that all representations made by these particulars are made in good faith on behalf of the seller and require verification by a buyers' legal and professional representatives prior to an exchange of contracts. We offer no guarantees for any structural component, service or appliance and while we make every effort to take accurate measurements and distances, they are illustrative only. Any reliance you place on information within these particulars is therefore strictly at your own risk.