

Stanfords
— sales & lettings —



Guide Price £525,000 Freehold
3 bedroom terraced house

Glenfarg Road
Catford

Read all about it...

This beautifully presented three-bedroom terraced house is ideally located on Glenfarg Road in the highly desirable Corbett Estate. The property features a lovingly landscaped south-facing garden, offering a tranquil retreat for relaxation or the perfect setting for entertaining family and friends.

Upon entering, the spacious entrance hall leads to a welcoming reception room, where bay windows overlooking the front of the property fill the space with natural light. At the rear, the generously proportioned dining room flows effortlessly into the bright and airy kitchen, creating a sociable and functional layout ideal for modern family living. The ground floor also boasts a modern family bathroom. Upstairs, the first floor comprises three bedrooms, including two well-sized doubles. This home also presents excellent potential for expansion, with the opportunity to extend both the ground floor and loft, as demonstrated by neighbouring properties, allowing for future customisation to suit your needs.

Situated less than a mile from both Hither Green and Catford Stations, this home benefits from exceptional transport links, with frequent rail and bus services providing easy access to Central London and beyond. The vibrant local area offers a wealth of independent shops, supermarkets, and dining options within walking distance. Popular with families, Catford is well-served by highly regarded nurseries and schools, while nearby Mountsfield Park provides a beautiful green space for outdoor activities and relaxation.

GROUND FLOOR
Council Tax: Lewisham band C

Entrance Hall
Wall-mounted light, understairs storage cupboard, radiator, wood flooring.

Reception Room
11' 5" x 11' 1" (3.48m x 3.38m)
Double-glazed bay windows, ceiling light, fireplace, radiator, wood flooring.

Dining Room
11' 5" x 10' 11" (3.48m x 3.33m)
Double-glazed door to garden, inset ceiling spotlights, radiator, wood flooring.

Kitchen
6' 11" x 6' 9" (2.11m x 2.06m)
Double-glazed windows, roof window, inset ceiling spotlights, fitted kitchen units, sink with mixer tap and drainer, integrated oven, gas hob and extractor hood, plumbing for washing machine, combi boiler, wood flooring.

Bathroom
6' 6" x 5' 5" (1.98m x 1.65m)
Double-glazed window, ceiling light, bathtub with shower, washbasin on vanity unit, WC, heated towel rail, tile flooring.

FIRST FLOOR
Bedroom
17' 2" x 9' 9" (5.23m x 2.97m)
Double-glazed windows, inset ceiling spotlights, radiators, fitted carpet.

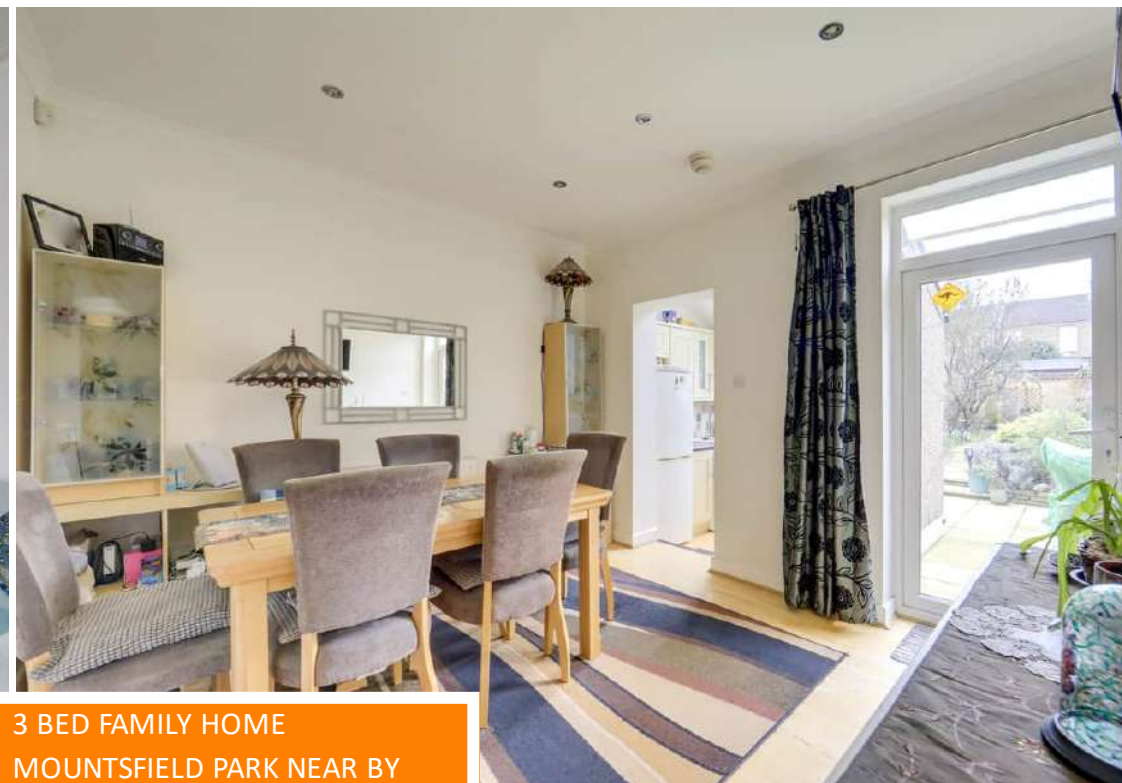
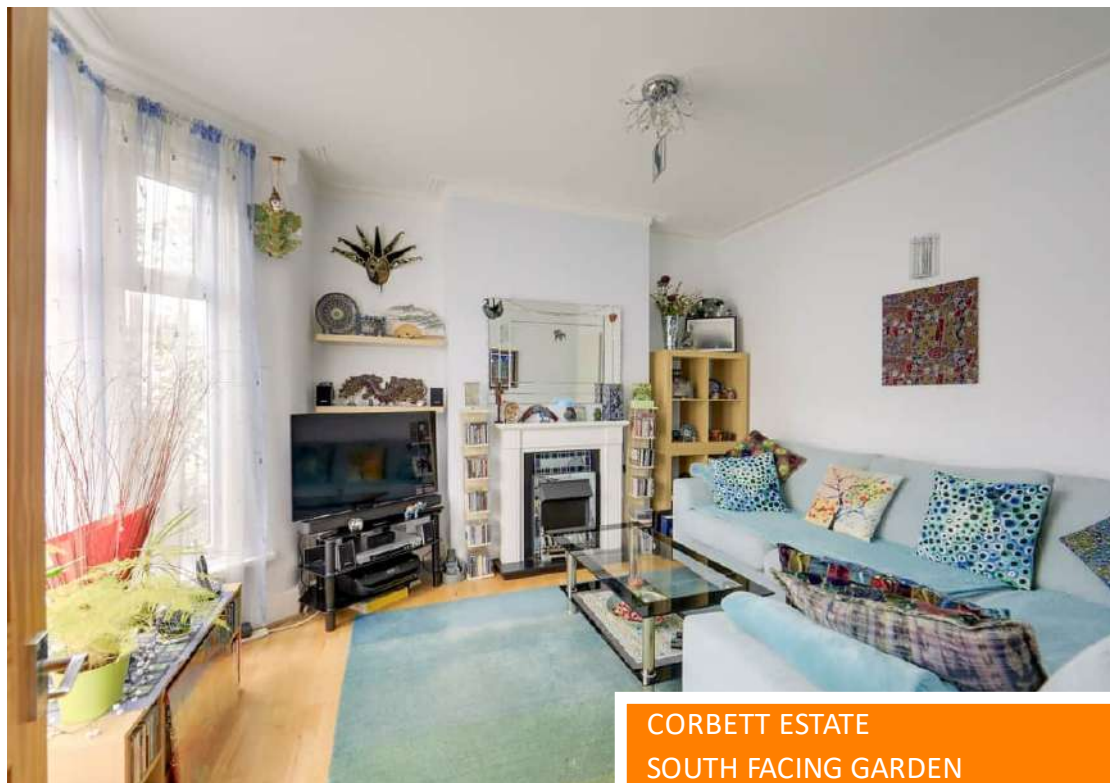
Bedroom
12' 3" x 8' 4" (3.73m x 2.54m)
Double-glazed window, inset ceiling spotlights, radiator, fitted carpet.

Bedroom
8' 6" x 6' 6" (2.59m x 1.98m)
Double-glazed window, ceiling light, radiator, wood flooring.

OUTSIDE
Garden
South-facing garden, paved patio leading to lawn with mature plant and tree borders, storage shed to rear.



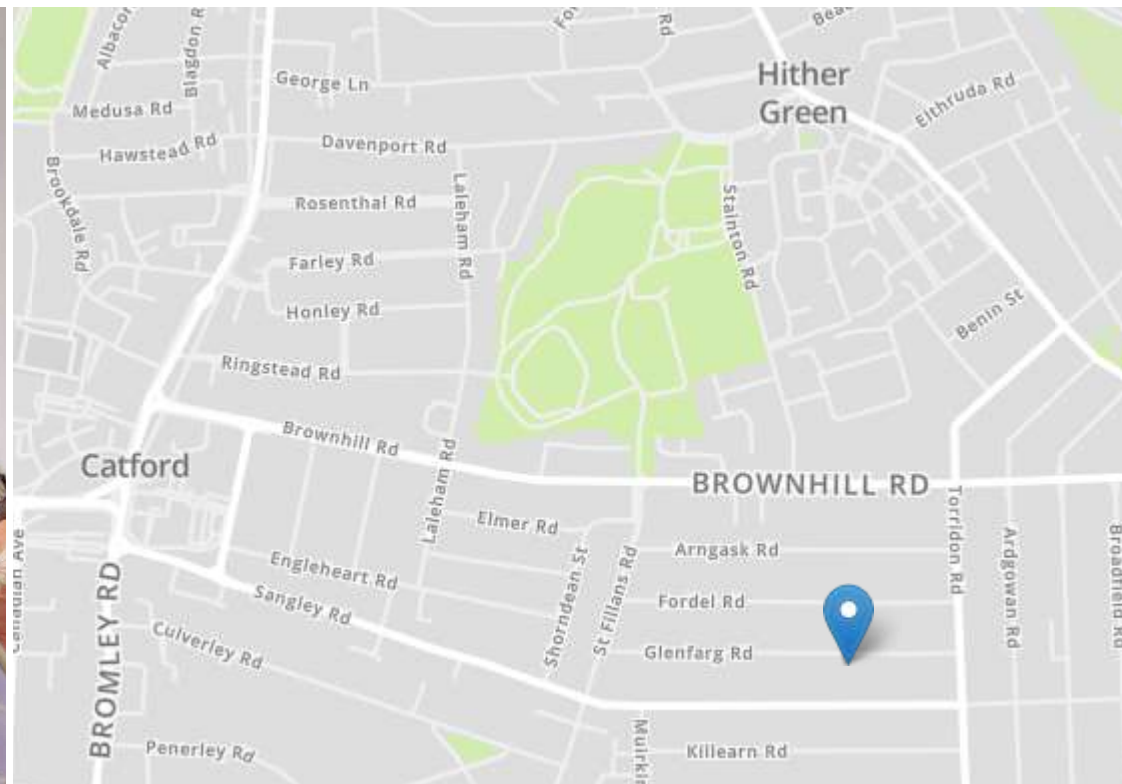
Like what you see?
Call 020 8690 3656 or email us at catford@stanfordestates.london
to arrange a viewing or request further information



CORBETT ESTATE
SOUTH FACING GARDEN
0.8MI TO HITHER GREEN STATION

3 BED FAMILY HOME
MOUNTSFIELD PARK NEAR BY
0.9MI TO TWIN CATFORD STATIONS





Energy Efficiency Rating		Current	Potential
Very energy efficient - lower running costs			
(92+)	A		
(81-91)	B		85
(69-80)	C		
(55-68)	D	66	
(39-54)	E		
(21-38)	F		
(1-20)	G		
Not energy efficient - higher running costs			
England, Scotland & Wales		EU Directive 2002/91/EC	



Robert Stanford Estates property particulars are produced in accordance with the Consumer Rights Act (2015) and should not be construed as a contract or offer. The contents of these property particulars are to provide a general illustration only and are inconsequential to any decisions to purchase a property. A potential buyer accepts that all representations made by these particulars are made in good faith on behalf of the seller and require verification by a buyers' legal and professional representatives prior to an exchange of contracts. We offer no guarantees for any structural component, service or appliance and while we make every effort to take accurate measurements and distances, they are illustrative only. Any reliance you place on information within these particulars is therefore strictly at your own risk.