



**Guide Price £700,000 Freehold**  
3 bedroom terraced house

Murillo Road  
Hither Green



# Read all about it...

A spacious three-bedroom family home located on Murillo Road, a quiet and sought-after residential street in Hither Green.

Stepping inside, this property retains many charming period features that make these homes so desirable. The welcoming entrance hall leads to a characterful living room, highlighted by a stunning feature fireplace, ornate ceiling rose and intricate cornicing. Towards the rear, you'll find a second reception room and a bright, eat-in kitchen filled with natural light. This spacious kitchen offers plenty of room for family meals and entertaining. French doors open directly onto the lovingly maintained garden, creating the perfect space for outdoor dining and relaxation.

Upstairs, a spacious landing leads to three well-proportioned bedrooms, including two generous doubles, and a family bathroom. Additional storage comes in the form of a cellar and a large loft - offering excellent potential for future extensions (STPP), as seen in many neighbouring homes.

Ideally situated within easy reach of both Hither Green and Lewisham stations, this home offers superb transport links, with buses, National Rail, and DLR services providing easy access to Central London and beyond. Essential local amenities, independent shops, supermarkets, and a variety of inviting places to eat and drink are just a short walk away. Murillo Road is particularly popular with families thanks to its proximity to local nurseries, schools, and the scenic open spaces of Manor House Gardens. Known for its vibrant community spirit, the area is further enhanced by the annual Murillo Road Street Party.

**Tenure:** Freehold | **Council Tax:** Lewisham band D

**THREE BED FAMILY HOME  
KITCHEN / DINER  
GREAT TRANSPORT LINKS**

**TWO RECEPTION ROOMS  
POTENTIAL TO EXTEND - STPP  
CLOSE TO MANOR HOUSE  
GARDENS**

**Like what you see?**

Call **020 8852 0026** or email us at [hithergreen@stanfordstates.london](mailto:hithergreen@stanfordstates.london)  
to arrange a viewing or request further information







## GROUND FLOOR

### Entrance Hall

Pendant ceiling light, radiator, wood flooring.

### Lounge

14' 5" x 12' 10" (4.39m x 3.91m)

Double-glazed windows, pendant ceiling light, fireplace, alcove cabinet and shelving, radiator, wood flooring.

### Dining Room

13' 1" x 10' 7" (3.99m x 3.23m)

Double-glazed French doors to garden, pendant ceiling light, alcove cabinets and shelving, radiator, wood flooring.

### Kitchen/Diner

19' 4" x 9' 8" (5.89m x 2.95m)

Sash window to side, French doors to garden, skylight, ceiling lights, fitted kitchen units, 1.5 down sink with mixer tap and drainer, plumbing for washing machine, integrated dishwasher, fridge/freezer, oven, 5 ring gas hob and extractor hood, access to cellar, radiator, vinyl flooring.

## FIRST FLOOR

### Landing

Pendant ceiling light, access to loft, fitted carpet.

### Bedroom

12' 10" x 12' 0" (3.91m x 3.66m)

Double-glazed windows, pendant ceiling light, fireplace, built-in closet, radiator, wood flooring.

### Bedroom

13' 1" x 10' 7" (3.99m x 3.23m)

Double-glazed window, pendant ceiling light, fireplace, alcove cabinets and shelving, radiator, wood flooring.

### Bedroom

7' 10" x 6' 5" (2.39m x 1.96m)

Double-glazed window, pendant ceiling light, radiator, wood flooring.

### Bathroom

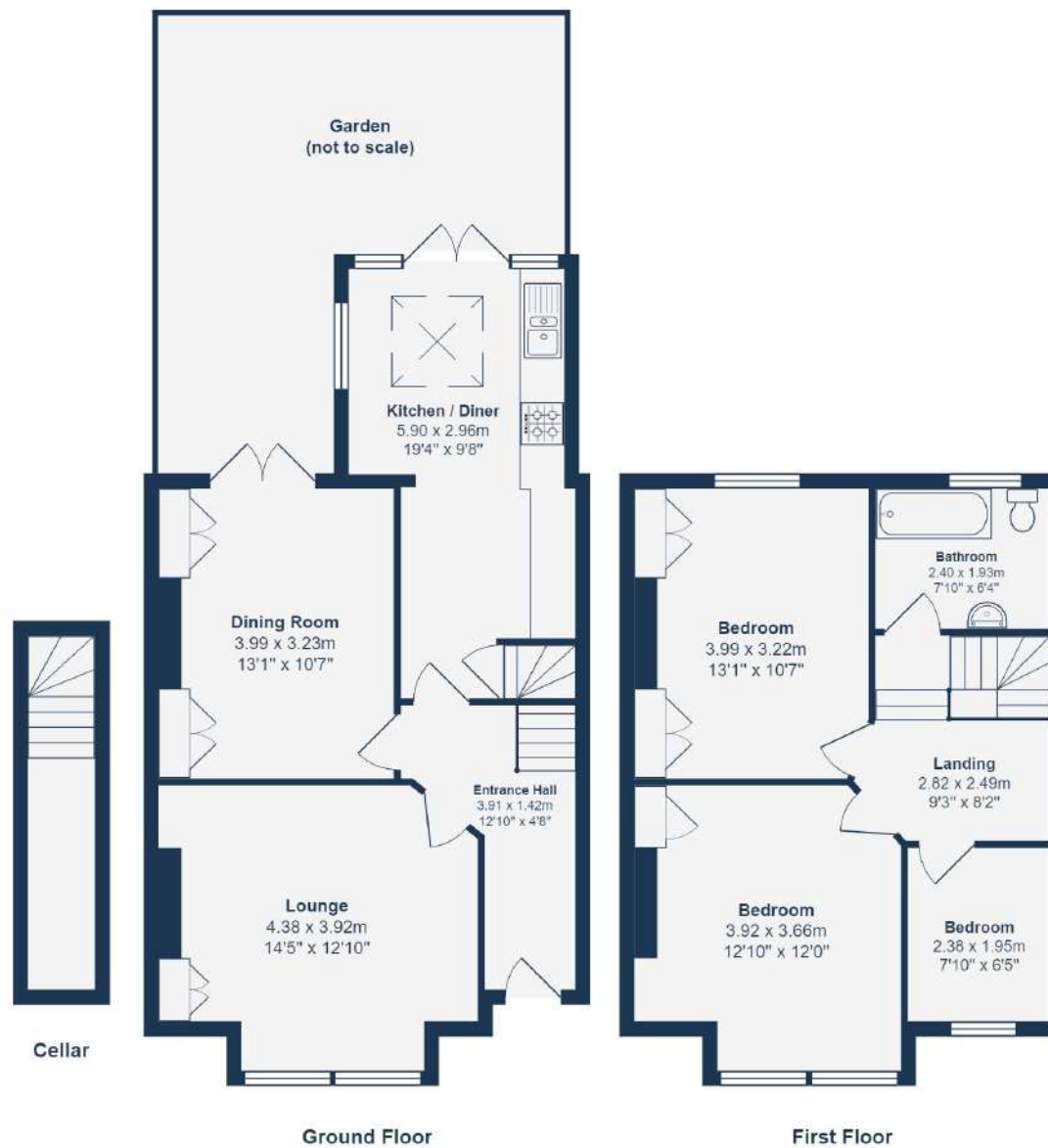
7' 10" x 6' 4" (2.39m x 1.93m)

Double-glazed window, ceiling light, bathtub with shower and screen, washbasin, WC, tile flooring.

## OUTSIDE

### Garden





Total Area: 100.0 m<sup>2</sup> ... 1076 ft<sup>2</sup>

Drawn for Stanfords Sales & Lettings

This floorplan is for illustrative purposes only. Whilst every effort has been made to ensure the accuracy of the plan, the dimensions and total area are approximated only and should not be relied upon.

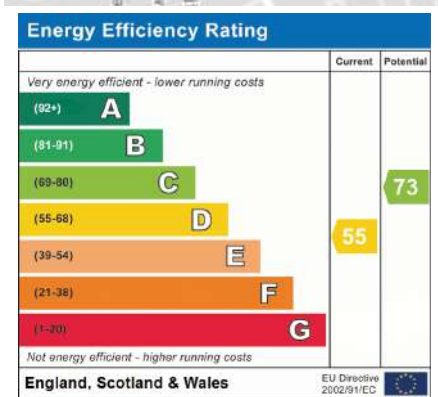












Robert Stanford Estates property particulars are produced in accordance with the Consumer Rights Act (2015) and should not be construed as a contract or offer. The contents of these property particulars are to provide a general illustration only and are inconsequential to any decisions to purchase a property. A potential buyer accepts that all representations made by these particulars are made in good faith on behalf of the seller and require verification by a buyers' legal and professional representatives prior to an exchange of contracts. We offer no guarantees for any structural component, service or appliance and while we make every effort to take accurate measurements and distances, they are illustrative only. Any reliance you place on information within these particulars is therefore strictly at your own risk.