



£2,500 pcm
3 bedroom terraced house

Murillo Road
Hither Green

Read all about it...

Offered furnished, this spacious three-bedroom terraced house is set on Murillo Road, a quiet and highly sought-after residential street in Hither Green.

Brimming with period charm, the welcoming entrance hall leads to a characterful living room, featuring a stunning fireplace, ornate ceiling rose, and intricate cornicing. The spacious dining room flows seamlessly into the kitchen, creating an ideal space for entertaining, while French doors open onto a well maintained garden. Upstairs, the light-filled landing benefits from built-in storage and leads to three well-proportioned bedrooms, including two generous doubles, and a modern bathroom. Additional storage is available in the cellar and loft.

Ideally located within easy reach of Hither Green and Lewisham Stations, offering excellent transport links via National Rail, buses, and the DLR, ensuring quick access to Central London and beyond. Local amenities, independent shops, supermarkets, and a variety of cafés and restaurants are just a short walk away. Families will appreciate the proximity to outstanding schools, nurseries, and the scenic open spaces of Manor House Gardens. The vibrant community spirit of Murillo Road is further enriched by its much-loved annual street party. Early viewing is advised.

Council Tax: Lewisham band D

**THREE BED TERRACED HOUSE
PERIOD FEATURES THROUGHOUT
KITCHEN / DINER
CLOSE TO MANOR HOUSE GARDENS**

**AVAILABLE APRIL 2025
FULLY FURNISHED
MODERN BATHROOM
GREAT TRANSPORT LINKS**



Like what you see?

Call **020 8852 0026** or email us at hithergreen@stanfordestates.london
to arrange a viewing or request further information



GROUND FLOOR

Entrance Hall

Pendant ceiling light, radiator, wood flooring.

Reception Room

4.60m x 4.00m (15' 1" x 13' 1")

Double-glazed windows, pendant ceiling light, fireplace, built-in shelving, radiator, wood flooring.

Dining Room

3.99m x 3.28m (13' 1" x 10' 9")

French doors to garden, pendant ceiling light, built-in cupboards, radiator, wood flooring.

Kitchen

4.71m x 1.80m (15' 5" x 5' 11")

Double-glazed window and French doors to garden, inset ceiling spotlights, fitted kitchen units, 1.5 bowl sink with mixer tap and drainer, dishwasher, washing machine, fridge/freezer, integrated oven, electric hob and extractor hood, radiator, vinyl flooring.

FIRST FLOOR

Landing

Skylight, pendant ceiling light, storage cupboards, wood flooring.

Bedroom

4.41m x 3.27m (14' 6" x 10' 9")

Double-glazed windows, track ceiling light, fireplace, radiator, wood flooring.

Bedroom

4.17m x 3.27m (13' 8" x 10' 9")

Double-glazed window, pendant ceiling light, fireplace, radiator, wood flooring.

Bedroom

2.75m x 1.82m (9' 0" x 6' 0")

Double-glazed window, pendant ceiling light, radiator, wood flooring.

Bathroom

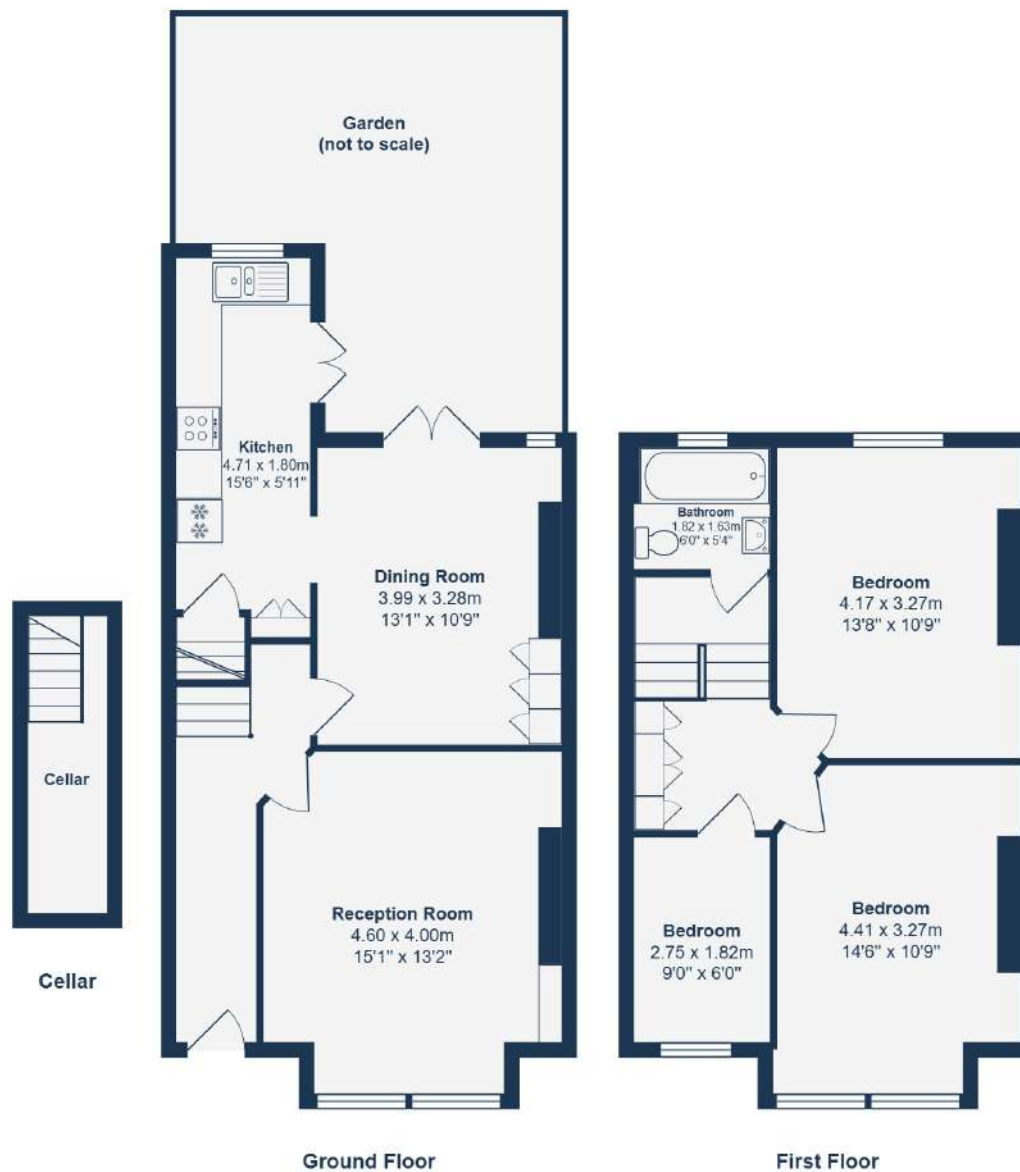
1.82m x 1.63m (6' 0" x 5' 4")

Skylight, double-glazed window, inset ceiling spotlights, bathtub with shower and screen, washbasin on vanity unit, WC, heated towel rail, wood flooring.

OUTSIDE

Garden

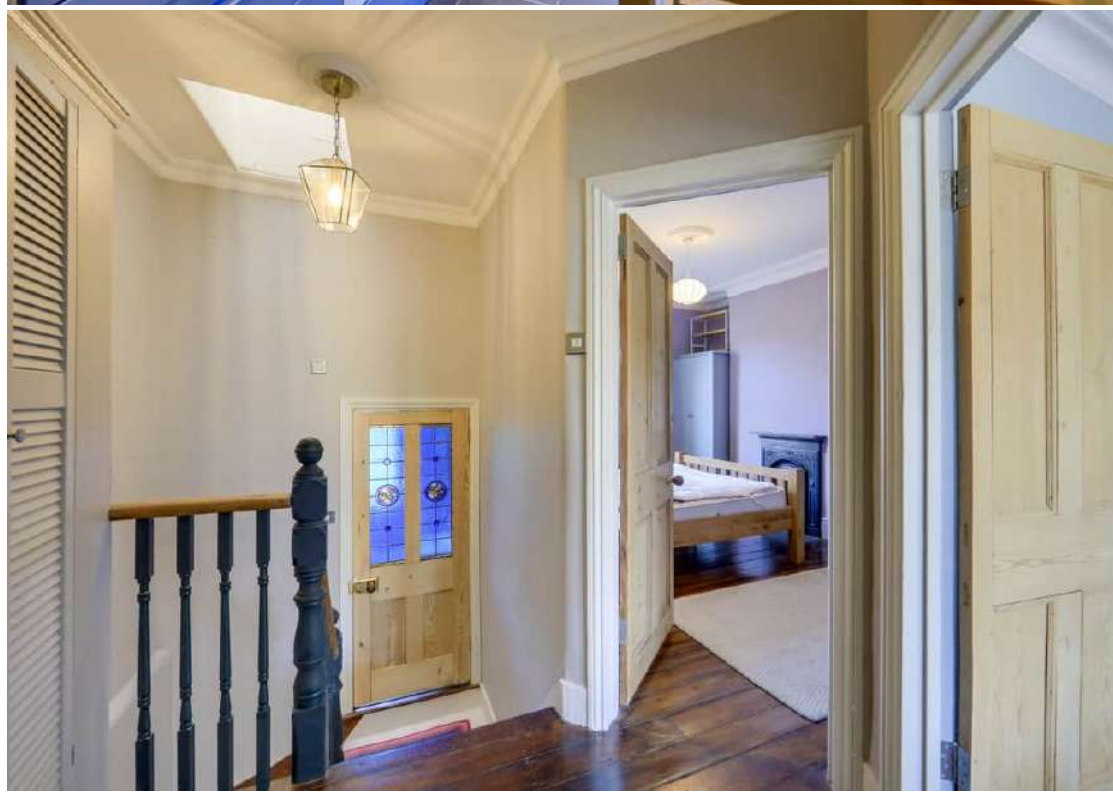
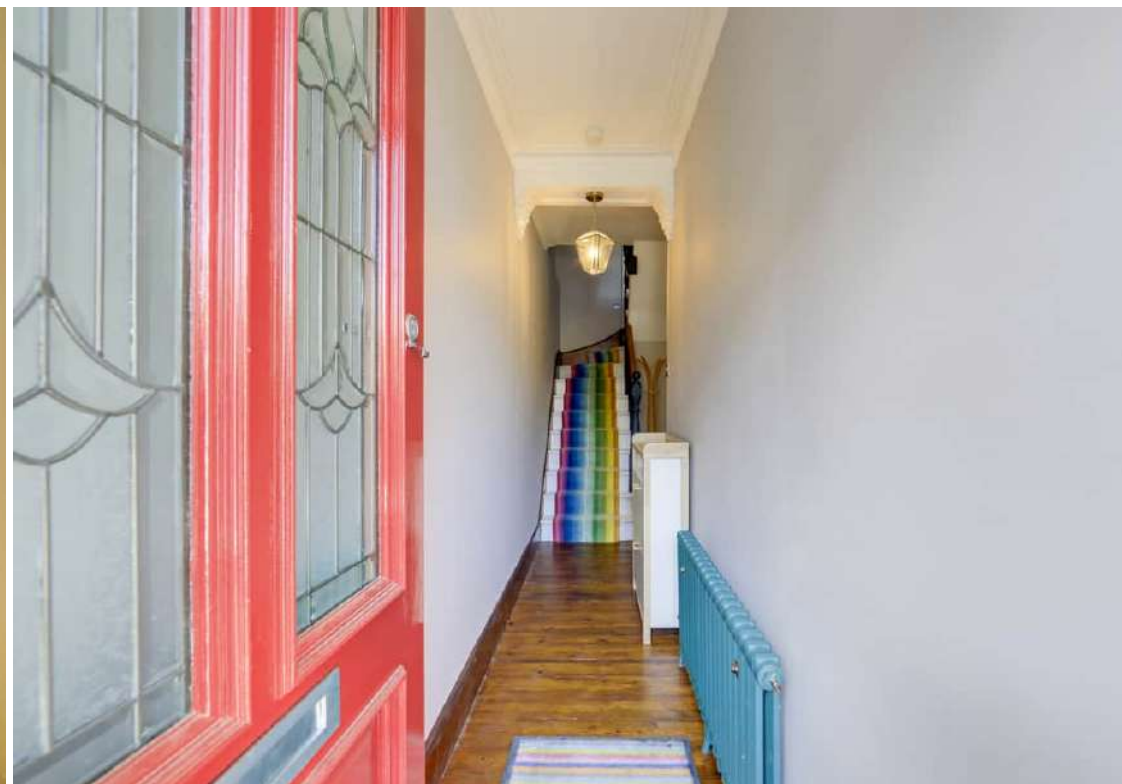
Paved garden with storage shed.



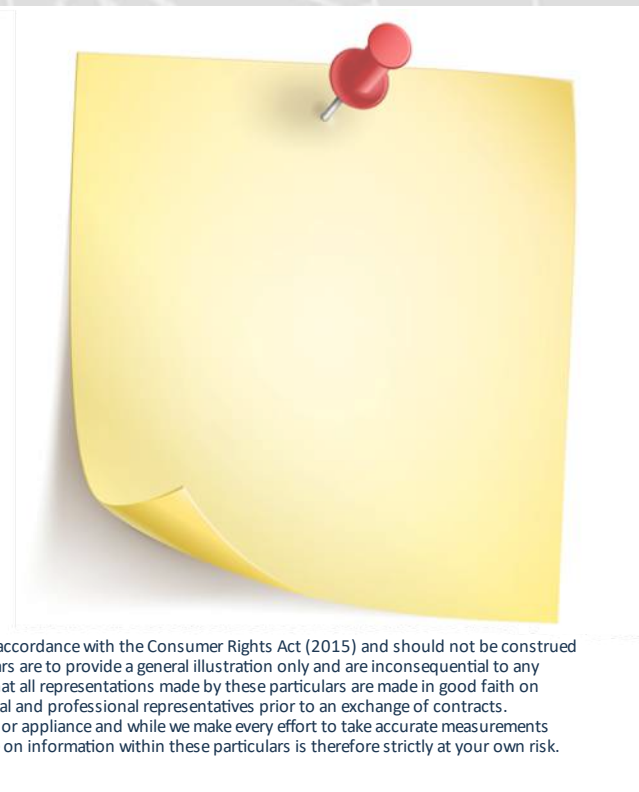
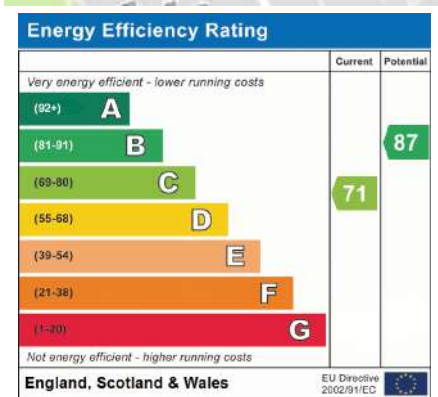
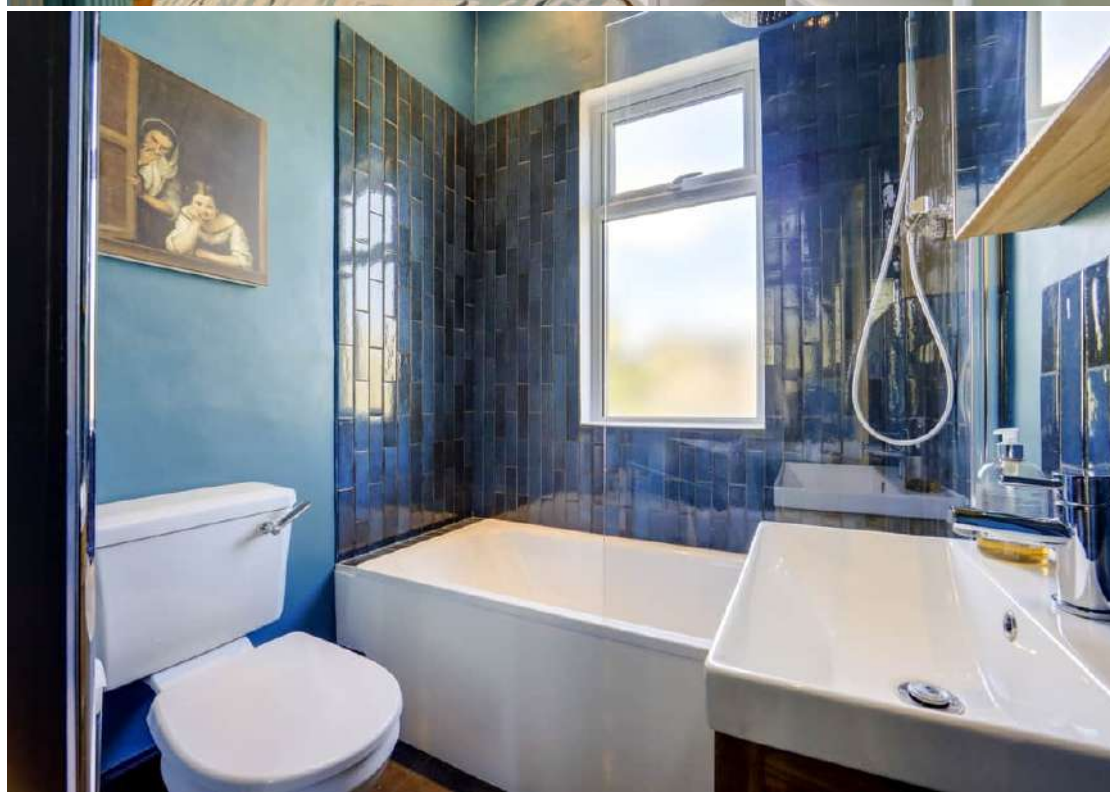
Total Area: 95.1 m² ... 1024 ft²

Drawn for Stanfords Sales & Lettings

This floorplan is for illustrative purposes only. Whilst every effort has been made to ensure the accuracy of the plan, the dimensions and total area are approximated only and should not be relied upon.







Robert Stanford Estates property particulars are produced in accordance with the Consumer Rights Act (2015) and should not be construed as a contract or offer. The contents of these property particulars are to provide a general illustration only and are inconsequential to any decisions to purchase a property. A potential buyer accepts that all representations made by these particulars are made in good faith on behalf of the seller and require verification by a buyers' legal and professional representatives prior to an exchange of contracts. We offer no guarantees for any structural component, service or appliance and while we make every effort to take accurate measurements and distances, they are illustrative only. Any reliance you place on information within these particulars is therefore strictly at your own risk.