



**£210,000 Leasehold**  
studio flat

Paxton Road  
Forest Hill

# Read all about it...

Set in the popular Paxton Road development in Forest Hill, this chain-free ground-floor studio flat is a lovely, low-maintenance home with a calm and friendly feel with the added bonus of shared gardens and a private residents' swimming pool as well as allocated off-street parking. The development is well looked after and has a strong sense of community. A great option for a first-time buyer, someone needing a weekday base, or anyone looking for a well-connected spot with some nice extras. Simple, easy living in a well-looked-after setting.

The main living area is light and open, offering enough room to sleep, relax, and dine comfortably. There's a separate modern kitchen and a well-kept bathroom. The entrance hall has space for coats and shoes, along with two handy storage cupboards, helping to keep things tidy.

Forest Hill, Sydenham, and Lower Sydenham stations are all nearby, giving you easy access to central London by Overground or National Rail. The area has a friendly, local feel with plenty of useful shops, supermarkets, and cafes, as well as green spaces like Horniman Gardens and Bell Green Retail Park for bigger errands.

**Tenure:** Leasehold (91 years remaining) The vendor is open to discussions around extending the lease | **Monthly Service Charge:** £169.75 | **Ground Rent:** £90pa | **Council Tax:** Lewisham band B

## GROUND FLOOR

### Entrance Hall

2.74m x 1.04m (9' 0" x 3' 5")

Pendant ceiling light, radiator, laminate wood flooring.

### Living Area

5.38m x 3.32m (17' 8" x 10' 11")

Track ceiling light, double-glazed window, radiator, laminate wood flooring.

### Kitchen

2.40m x 2.02m (7' 10" x 6' 8")

Track ceiling light, double-glazed window, fitted kitchen units, sink with mixer tap and drainer, integrated oven and electric hob, extractor hood, plumbing for washing machine, tile flooring.

### Bathroom

1.70m x 1.11m (5' 7" x 3' 8")

Inset ceiling spotlights, bathtub with shower and screen, washbasin, WC, heated towel rail, tile flooring.

## OUTSIDE

**Allocated off-street parking**

**Communal Garden**

**Communal indoor swimming pool**



Ground Floor

Total Area: 31.7 m<sup>2</sup> ... 341 ft<sup>2</sup>

Drawn for Stanfords Sales & Lettings

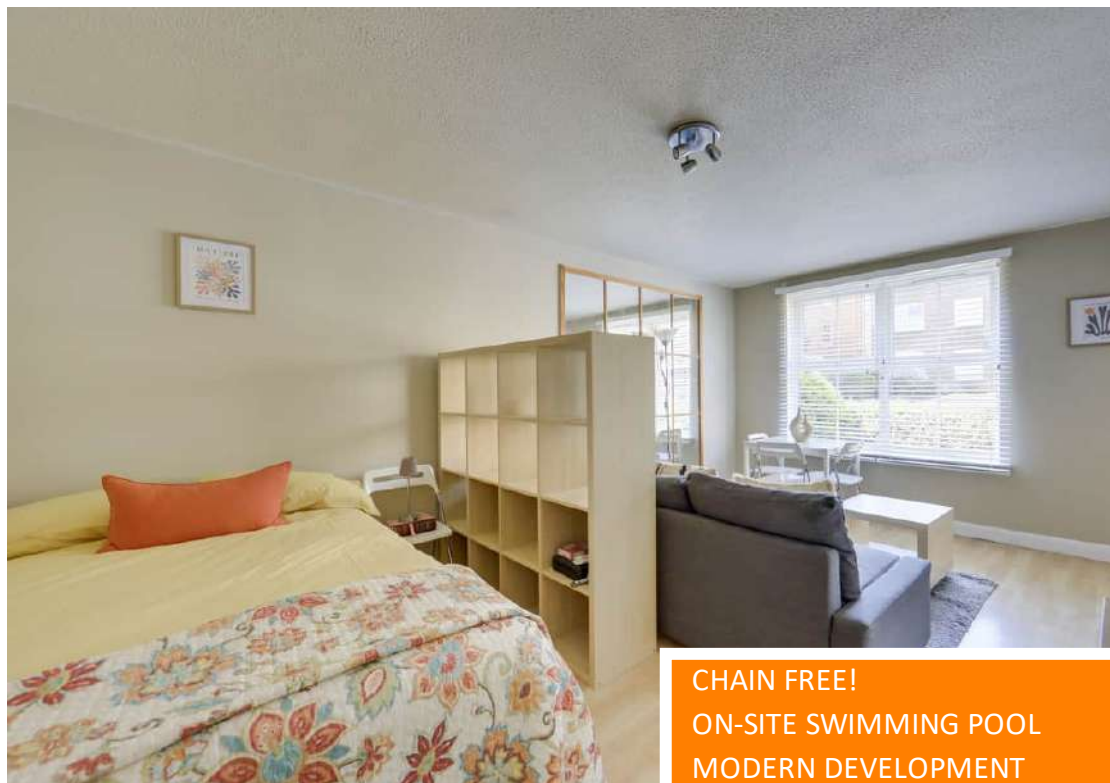
This floorplan is for illustrative purposes only. Whilst every effort has been made to ensure the accuracy of the plan, the dimensions and total area are approximated only and should not be relied upon.

Like what you see?

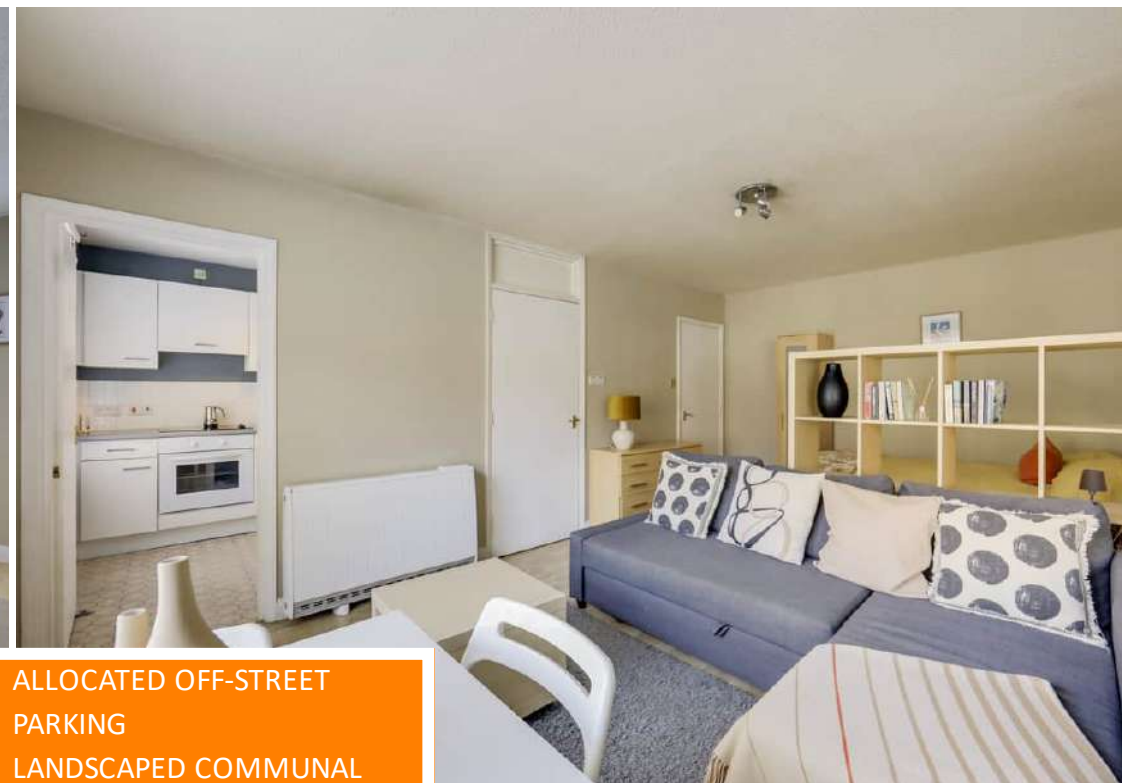
Call 020 8699 6778 or email us at [foresthill@stanfordstates.london](mailto:foresthill@stanfordstates.london) to arrange a viewing or request further information

[www.stanfordstates.london](http://www.stanfordstates.london)

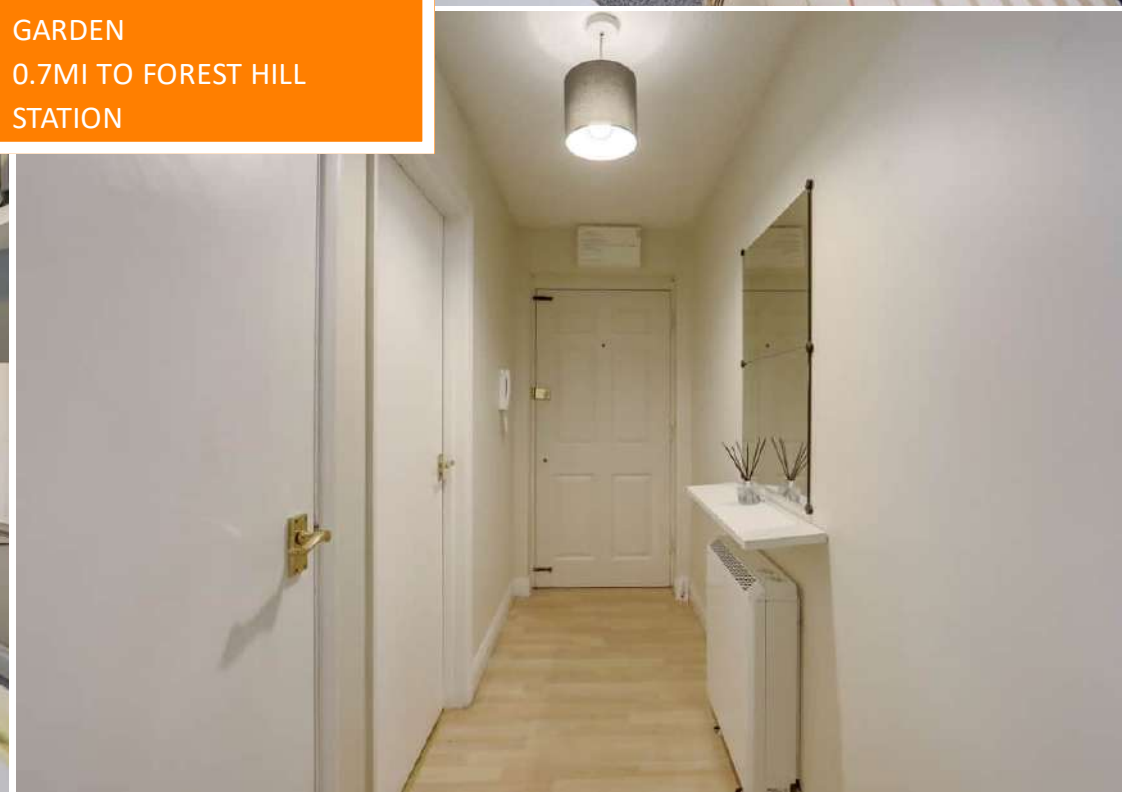
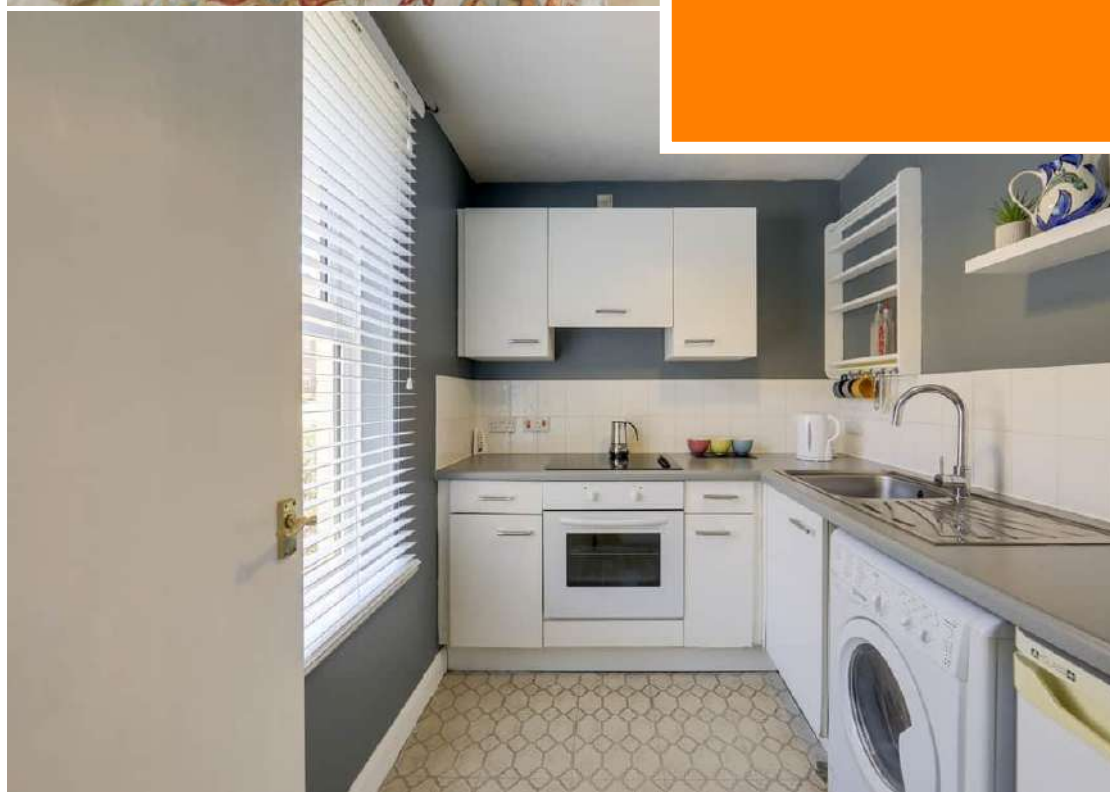




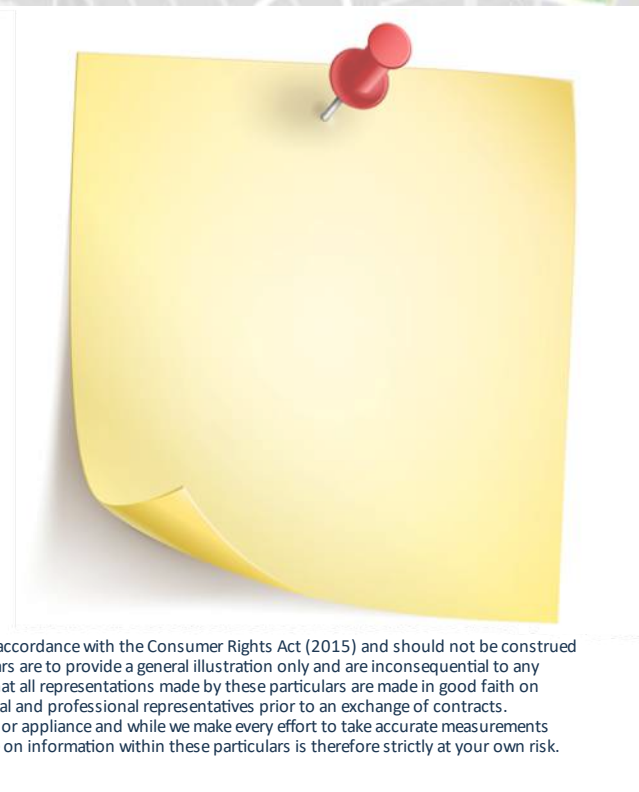
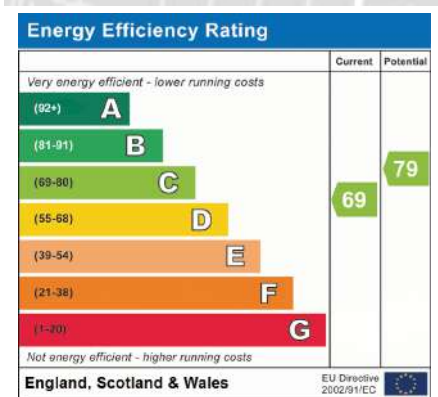
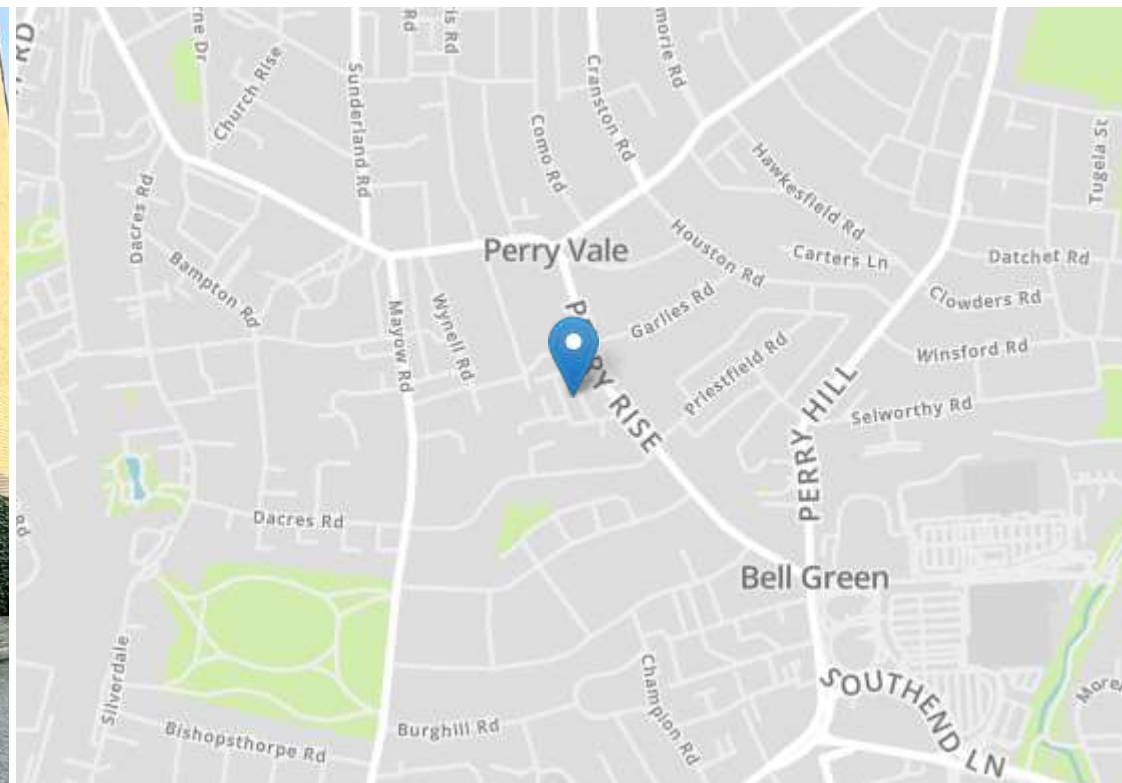
CHAIN FREE!  
ON-SITE SWIMMING POOL  
MODERN DEVELOPMENT



ALLOCATED OFF-STREET  
PARKING  
LANDSCAPED COMMUNAL  
GARDEN  
0.7MI TO FOREST HILL  
STATION







Robert Stanford Estates property particulars are produced in accordance with the Consumer Rights Act (2015) and should not be construed as a contract or offer. The contents of these property particulars are to provide a general illustration only and are inconsequential to any decisions to purchase a property. A potential buyer accepts that all representations made by these particulars are made in good faith on behalf of the seller and require verification by a buyers' legal and professional representatives prior to an exchange of contracts. We offer no guarantees for any structural component, service or appliance and while we make every effort to take accurate measurements and distances, they are illustrative only. Any reliance you place on information within these particulars is therefore strictly at your own risk.