



Guide Price £550,000 Leasehold
3 bedroom maisonette

The Woodlands
Hither Green
SE13 6TX

Read all about it...

A beautifully presented three-bedroom first-floor maisonette, with a private garden, double garage and sole ownership of loft.

This property is ideally situated on The Woodlands, a quiet residential street just 0.6 miles from Hither Green Station, providing a range of commuter services directly into Central London, and in close proximity to a variety of local amenities, including independent shops, cafes and restaurants.

The popular Mountsfield Park is just a stone's throw away with green open spaces, tennis courts, a bowling green and a cafe.

Accessed via its own front door, this property boasts a private garden with side access and a double garage - an ideal workshop space with the potential to be converted into a home office/studio, with prior approved planning permission in place already. Internally this property consists of a bright and spacious lounge, a large kitchen/diner and a family bathroom. There are two good-sized bedrooms and the third smaller bedroom would make a perfect home office or nursery. This property also benefits from a large loft space, perfect for storage - with the potential to extend (subject to relevant permissions).

Tenure: Leasehold (145 years remaining) | Service Charge: N/A | Ground Rent: N/A | Council Tax: Lewisham Band C

FIRST FLOOR

Landing

Stripped wooden floors, storage cupboards and access to loft space.

Lounge

17'0" x 13'9" (5.18m x 4.19m)
Double glazed bay window to front, stripped wooden floor, radiator.

Kitchen

13'6" x 10'11" (4.11m x 3.33m)
Double glazed window to rear, wooden flooring, tiled splash-back, wall & base units with worktop, mixer tap sink with single drain, gas oven with 4 ring hob, extractor hood, integrated dishwasher & washing machine, storage cupboards, built in pantry cupboard.

Bedroom

14'5" x 13'9" (4.39m x 4.19m)
Double glazed windows to rear, stripped wooden floor, radiator, pendant light fixture.

Bedroom

10'5" x 10'2" (3.17m x 3.10m)
Double glazed window to side, stripped wooden floor, radiator, pendant light fixture.

Bedroom

7'3" x 9'7" (2.21m x 2.92m)
single glazed window to front, stripped wooden floor, radiator, pendant light fixture.

Bathroom

7'2" x 10'5" (2.18m x 3.17m)
Double glazed window to side, tiled flooring, low-level WC, wash basin, bath with overhead shower, extractor fan.

OUTSIDE

Private Rear Garden

Circa 40ft, side access, stone pathway, planting areas.

Garage

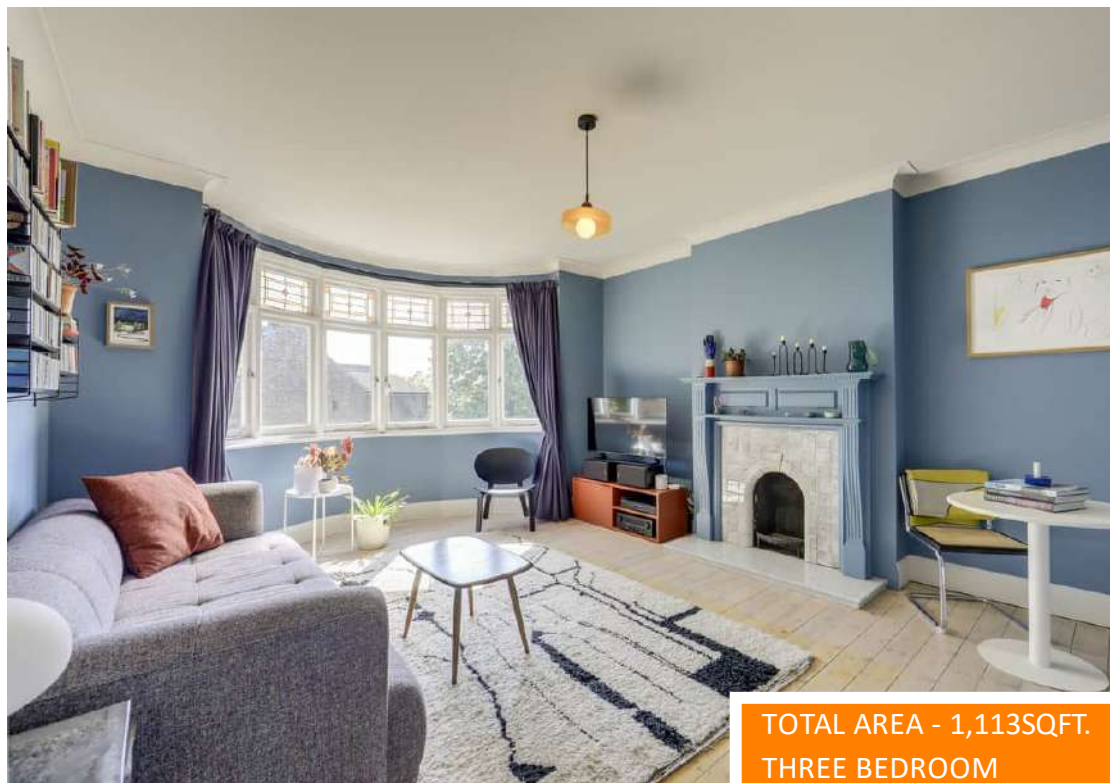
18'6" x 16'7" (5.64m x 5.05m)



Like what you see?

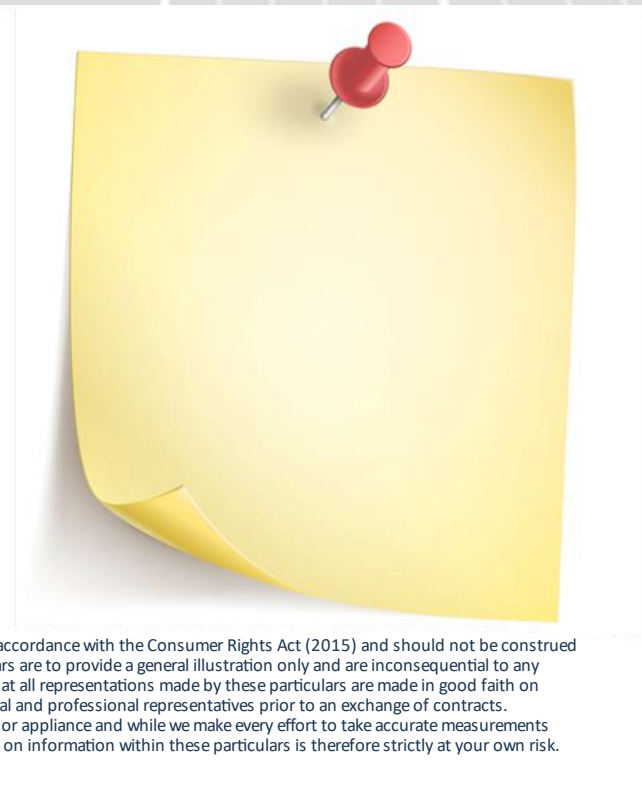
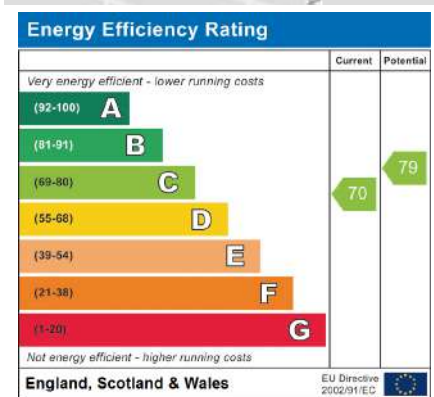
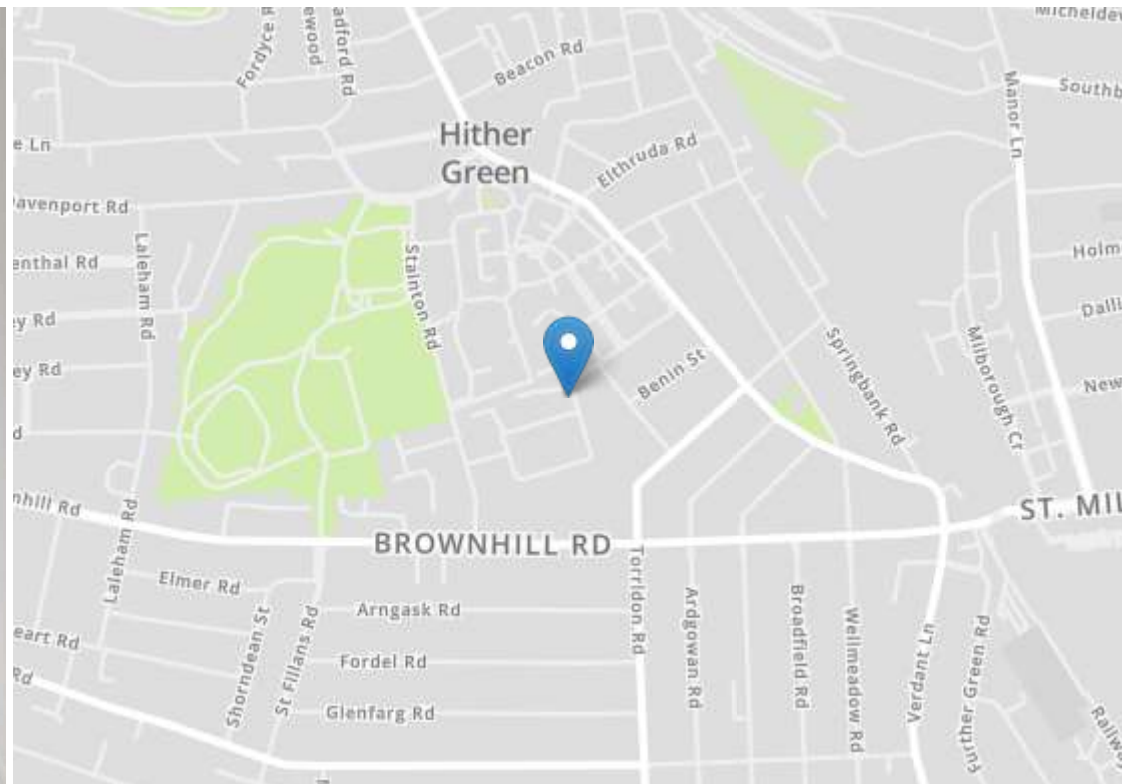
Call 020 8852 0026 or email us at hithergreen@stanfordstates.london to arrange a viewing or request further information

www.stanfordstates.london



TOTAL AREA - 1,113SQFT. PRIVATE GARDEN
THREE BEDROOM DETACHED GARAGE
MAISONETTE
LARGE LOFT





Robert Stanford Estates property particulars are produced in accordance with the Consumer Rights Act (2015) and should not be construed as a contract or offer. The contents of these property particulars are to provide a general illustration only and are inconsequential to any decisions to purchase a property. A potential buyer accepts that all representations made by these particulars are made in good faith on behalf of the seller and require verification by a buyers' legal and professional representatives prior to an exchange of contracts. We offer no guarantees for any structural component, service or appliance and while we make every effort to take accurate measurements and distances, they are illustrative only. Any reliance you place on information within these particulars is therefore strictly at your own risk.