



**£1,400 pcm**  
2 bedroom maisonette

Shipman Road  
Forest Hill

## Read all about it...

This ground floor flat is in a period property in a quiet residential area of forest hill, yet only ½ a mile from the station and shops at forest hill town centre. The flat itself is spacious, split level and comes with a private patio garden. Also on offer is a fitted kitchen, 14'+ lounge and two bedrooms. Available Now!

### GROUND FLOOR

#### Bedroom

4.3m x 3.69m (14' 1" x 12' 1")

Pendant light, wall to ceiling coving, large sash windows, dido rail, original cast iron fireplace with wood surround, stripped wood flooring.

#### Bedroom

3.69m x 3.37m (12' 1" x 11' 1")

Pendant light, walk in wardrobes, sash window, stripped wood flooring.

#### Bathroom

2.66m x 1.53m (8' 9" x 5' 0")

Spotlight, tiled surround, showerhead over bathtub, sink basin, WC, towel rail, tiled flooring.

#### Kitchen

3.33m x 2.59m (10' 11" x 8' 6")

Spotlights, large bay window, matching wall and base units, electric oven, gas hob with overhead extractor, sink, tiled flooring.

#### Lounge

3.8m x 2.57m (12' 6" x 8' 5")

Pendant light, window, door to garden, radiator, fitted carpet.

#### Garden

Patioed area.



Ground Floor Flat

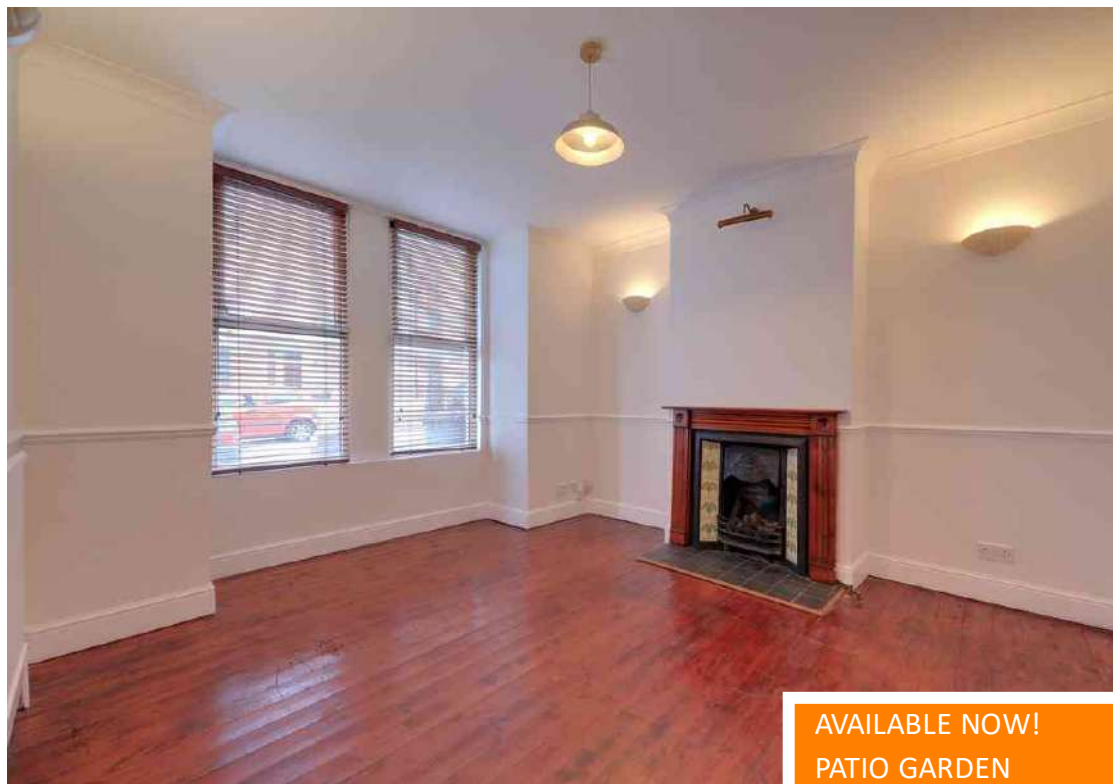
Total Area: 64.3 m<sup>2</sup> ... 692 ft<sup>2</sup> (excluding garden)

All measurements are approximate and for display purposes only

Like what you see?

Call 020 8699 6778 or email us at [foresthill@stanfordstates.london](mailto:foresthill@stanfordstates.london)  
to arrange a viewing or request further information

[www.stanfordstates.london](http://www.stanfordstates.london)

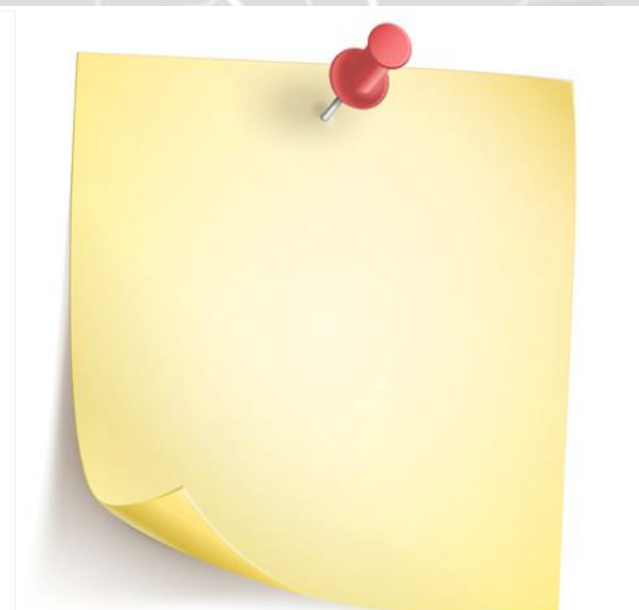
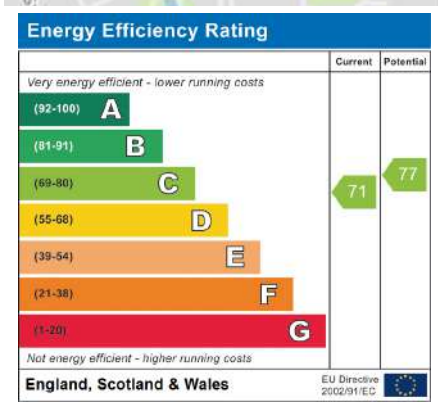


AVAILABLE NOW!  
PATIO GARDEN  
STORAGE  
CUPBOARDS

2 DOUBLE BEDROOMS  
692 SQFT







Robert Stanford Estates property particulars are produced in accordance with the Consumer Rights Act (2015) and should not be construed as a contract or offer. The contents of these property particulars are to provide a general illustration only and are inconsequential to any decisions to purchase a property. A potential buyer accepts that all representations made by these particulars are made in good faith on behalf of the seller and require verification by a buyers' legal and professional representatives prior to an exchange of contracts. We offer no guarantees for any structural component, service or appliance and while we make every effort to take accurate measurements and distances, they are illustrative only. Any reliance you place on information within these particulars is therefore strictly at your own risk.