



£1,400 pcm
1 bedroom flat

Cherrywood Lodge
Hither Green

Read all about it...

A bright and modern one-bedroom flat, offered furnished and available for immediate viewing.

Set on the fifth floor of Cherrywood Lodge in the popular Meridian South development, this well-presented flat features a spacious entrance hall with built-in storage, a good-sized double bedroom with fitted wardrobe, and a contemporary bathroom. The open-plan lounge and kitchen is filled with natural light and opens onto a private balcony with picturesque views.

Just a short walk from Hither Green Station, the flat is ideally located for quick links to Central London and is close to a Tesco Express, 24-hour gym, health centre, and pharmacy. Independent shops, cafés, and Mountsfield Park are also nearby, adding to the area's vibrant community feel.

FIFTH FLOOR

Entrance Hall

Pendant ceiling light, storage cupboards, electric wall heater, laminate wood flooring.

Open Plan Lounge & Kitchen

4.65m x 4.36m (15' 3" x 14' 4")
Double-glazed window and doors to balcony, inset ceiling spotlights, fitted kitchen units, 1.5 bowl sink with mixer tap and drainer, integrated washing machine, oven and electric hob, extractor hood, fridge/freezer, laminate wood flooring.

Bedroom

3.64m x 3.38m (11' 11" x 11' 1")
Double-glazed doors to balcony, pendant ceiling light, built-in wardrobe, electric wall heater, laminate wood flooring.

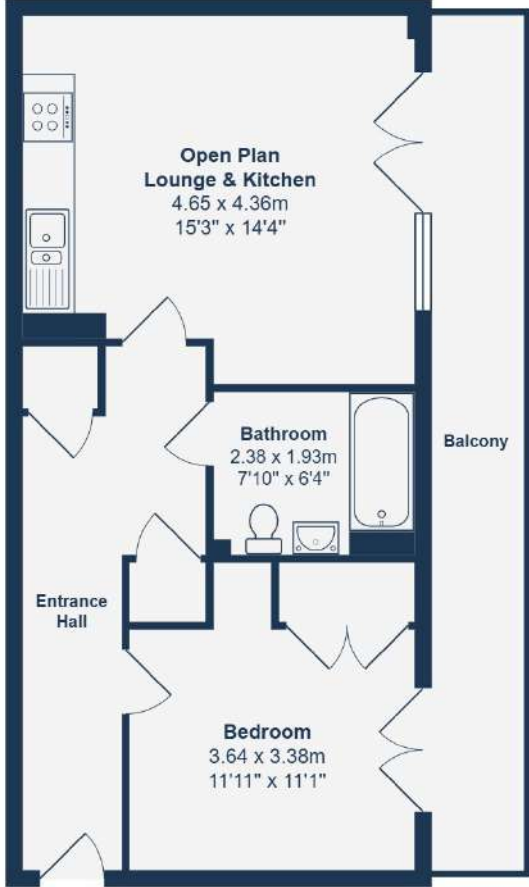
Bathroom

2.38m x 1.93m (7' 10" x 6' 4")
Ceiling light, bathtub with shower and screen, washbasin on vanity unit, WC, heated towel rail, tile flooring.

OUTSIDE

Balcony

Private balcony with Clock Tower views.



Fifth Floor

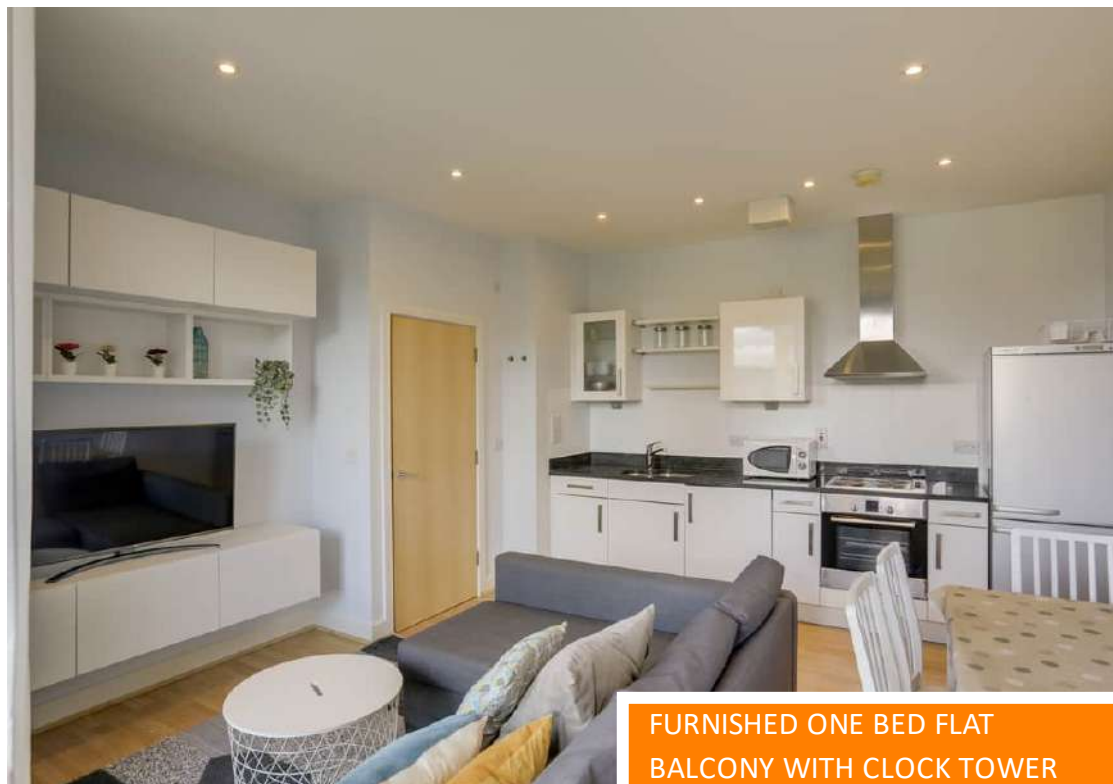
Total Area: 47.1 m² ... 507 ft² (excluding balcony)

Drawn for Stanfords Sales & Lettings
This floorplan is for illustrative purposes only. Whilst every effort has been made to ensure the accuracy of the plan, the dimensions and total area are approximated only and should not be relied upon.

Like what you see?

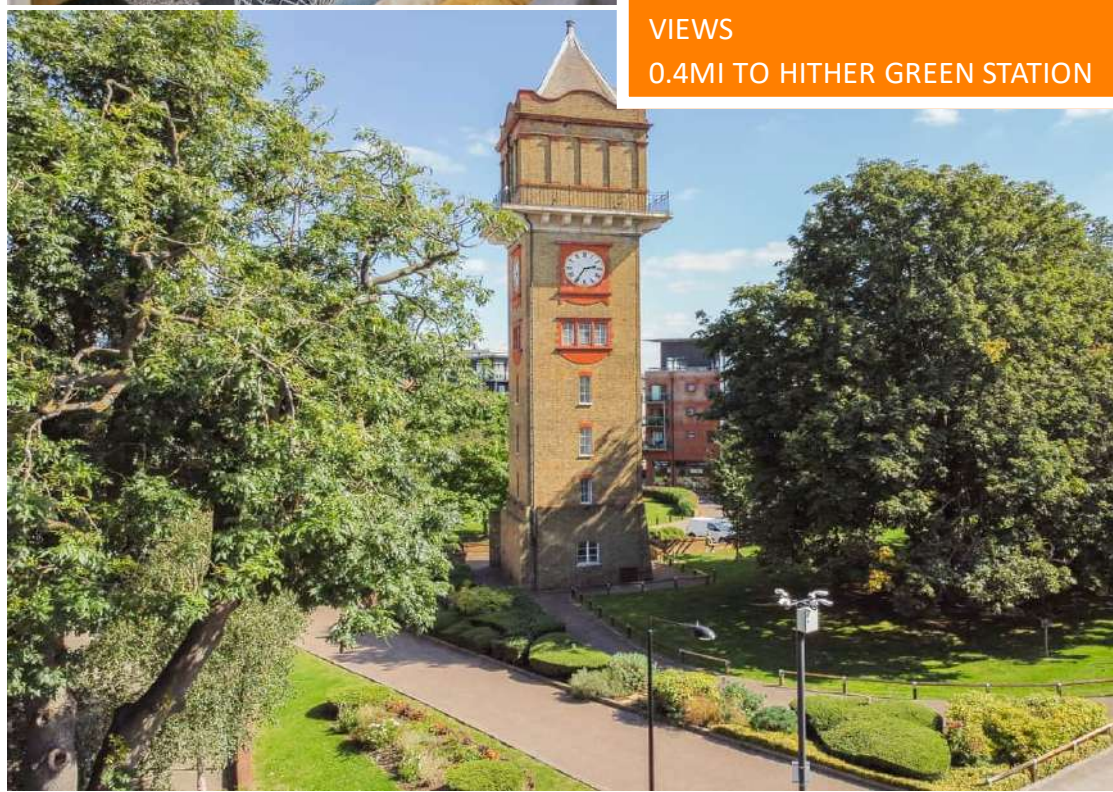
Call 020 8852 0026 or email us at hithergreen@stanfordestates.london to arrange a viewing or request further information

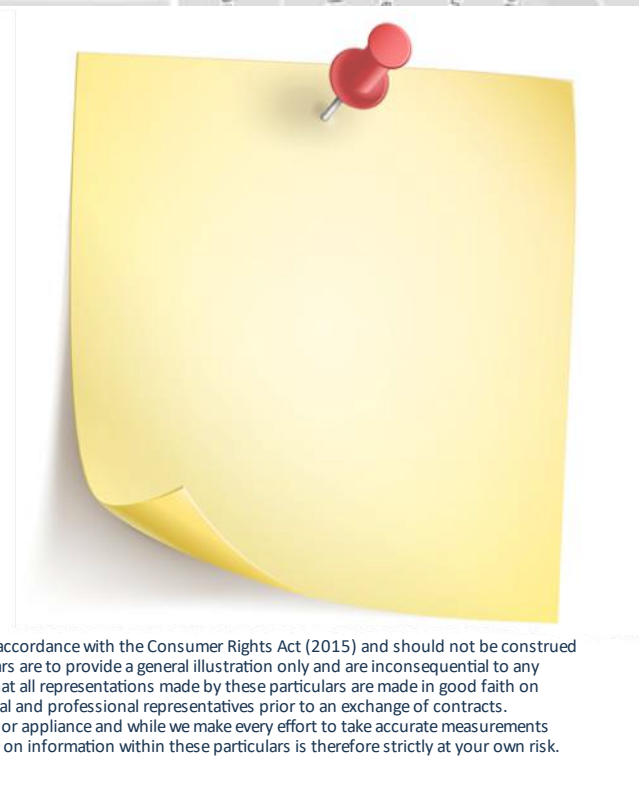
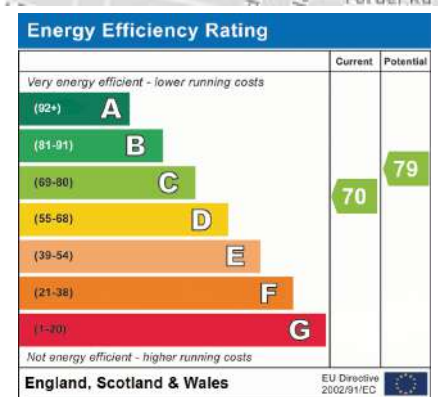
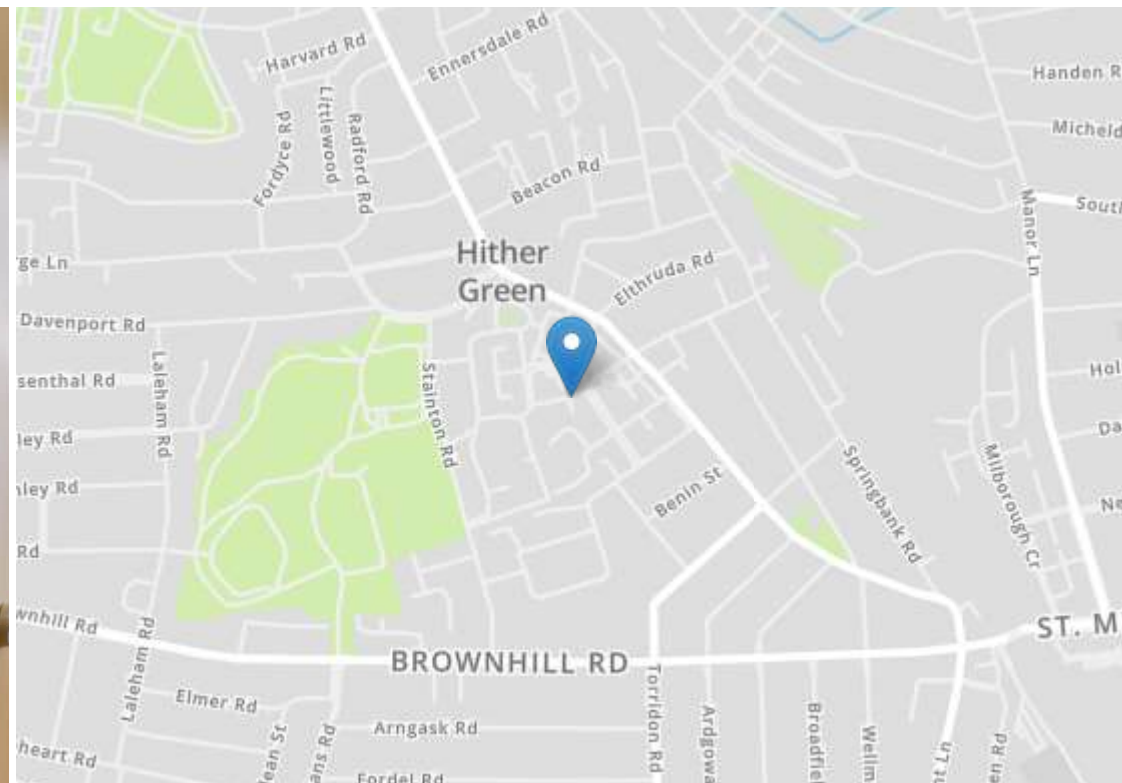
www.stanfordestates.london



FURNISHED ONE BED FLAT
BALCONY WITH CLOCK TOWER
VIEWS
0.4MI TO HITHER GREEN STATION

OPEN PLAN LOUNGE/KITCHEN
MODERN DEVELOPMENT
CLOSE TO MOUNTSFIELD PARK





Robert Stanford Estates property particulars are produced in accordance with the Consumer Rights Act (2015) and should not be construed as a contract or offer. The contents of these property particulars are to provide a general illustration only and are inconsequential to any decisions to purchase a property. A potential buyer accepts that all representations made by these particulars are made in good faith on behalf of the seller and require verification by a buyers' legal and professional representatives prior to an exchange of contracts. We offer no guarantees for any structural component, service or appliance and while we make every effort to take accurate measurements and distances, they are illustrative only. Any reliance you place on information within these particulars is therefore strictly at your own risk.