



**£1,950 pcm Not Applicable**  
2 bedroom flat

Handen Road  
Lee

# Read all about it...

A spectacular ground-floor, two double-bedroom, period converted garden flat situated on the sought-after, tree-lined street on Handen Road in Lee. Internally, the property offers an abundance of space with exceptionally high ceilings throughout with stunning period features. The lounge leads out to a very well kept private garden, with additional storage throughout the whole property. Just 0.6 miles away from Hither Green Station and Manor House Gardens a short walk away. The property is offered furnished/unfurnished and available to view. Lewisham council Tax band (D)

## GROUND FLOOR

### Lounge/Diner

20' 5" x 14' 6" (6.22m x 4.42m)

Double doors leading to private rear garden, pendant ceiling light, fireplace, radiators, wood flooring.

### Kitchen

Double glazed window and door to side, pendant ceiling light, fully fitted kitchen, tiled flooring.

### Bedroom

11' 11" x 18' 0" (3.63m x 5.49m)

Double glazed sash windows to front, ceiling light, radiator, fireplace, wood flooring.

### Bedroom

12' 0" x 13' 3" (3.66m x 4.04m)

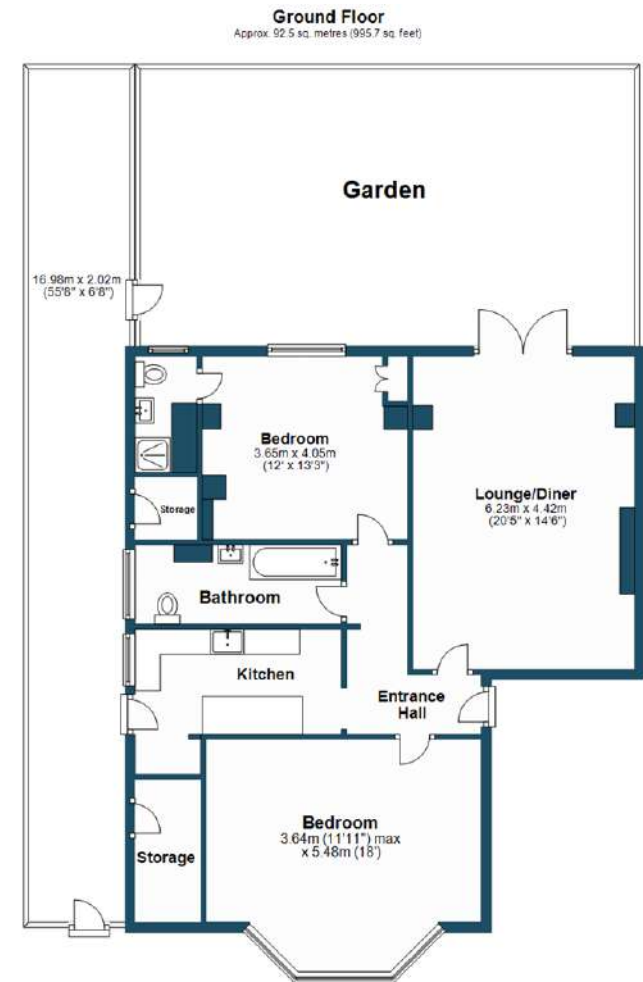
Double glazed sash window to rear, pendant ceiling light, storage cupboard, radiator, wood flooring.

### En-Suite Shower Room

Double glazed sash window to rear, walk in shower, tiled splashback, washbasin, W/C, tiled flooring.

### Bathroom

Double glazed sash window, ceiling light, bathtub with shower attachment, tiled splashback, washbasin on vanity unit, W/C, heated towel rail, tiled flooring.



Total area: approx. 92.5 sq. metres (995.7 sq. feet)

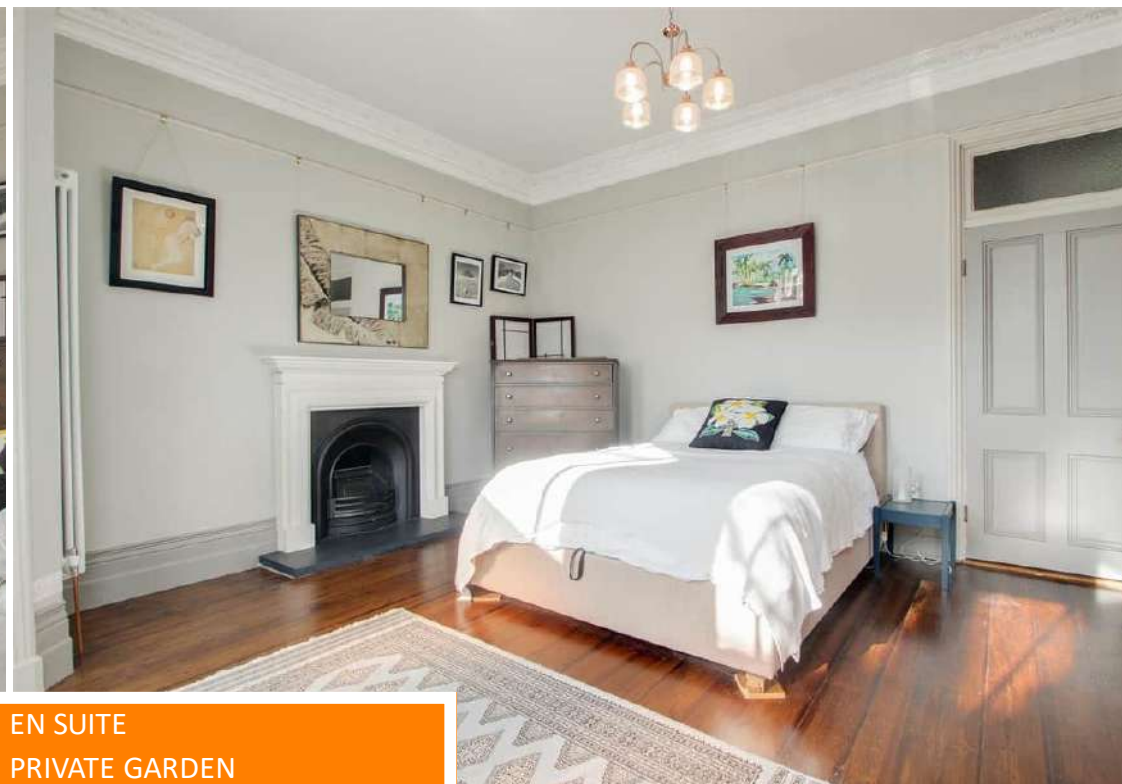
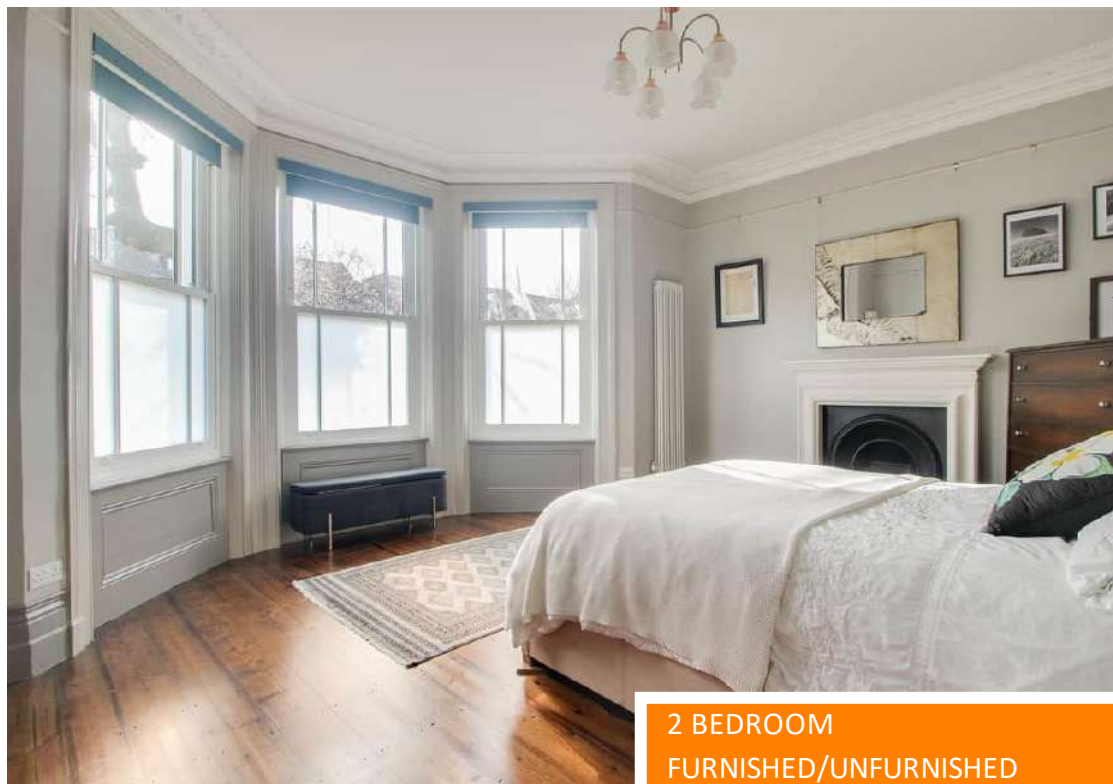
Disclaimer: Please note this floor plan is for marketing purposes and is to be used as a guide only. All efforts have been made to ensure its accuracy at time of marketing.  
Plan produced using PlanUp.

Like what you see?

Call 020 8852 0026 or email us at [hithergreen@stanfordestates.london](mailto:hithergreen@stanfordestates.london) to arrange a viewing or request further information

[www.stanfordestates.london](http://www.stanfordestates.london)





2 BEDROOM

FURNISHED/UNFURNISHED

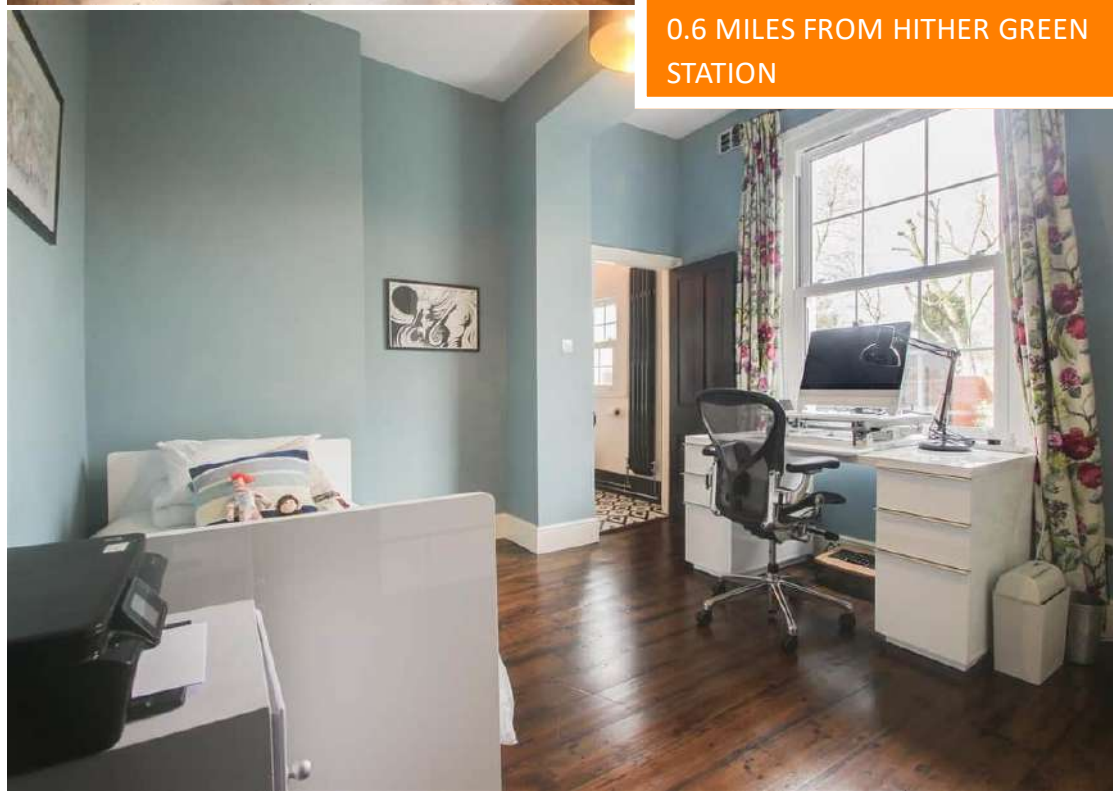
0.6 MILES FROM HITHER GREEN

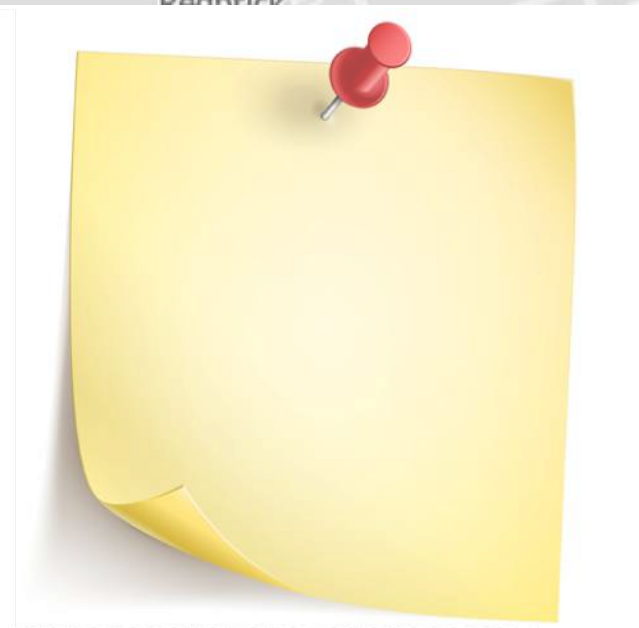
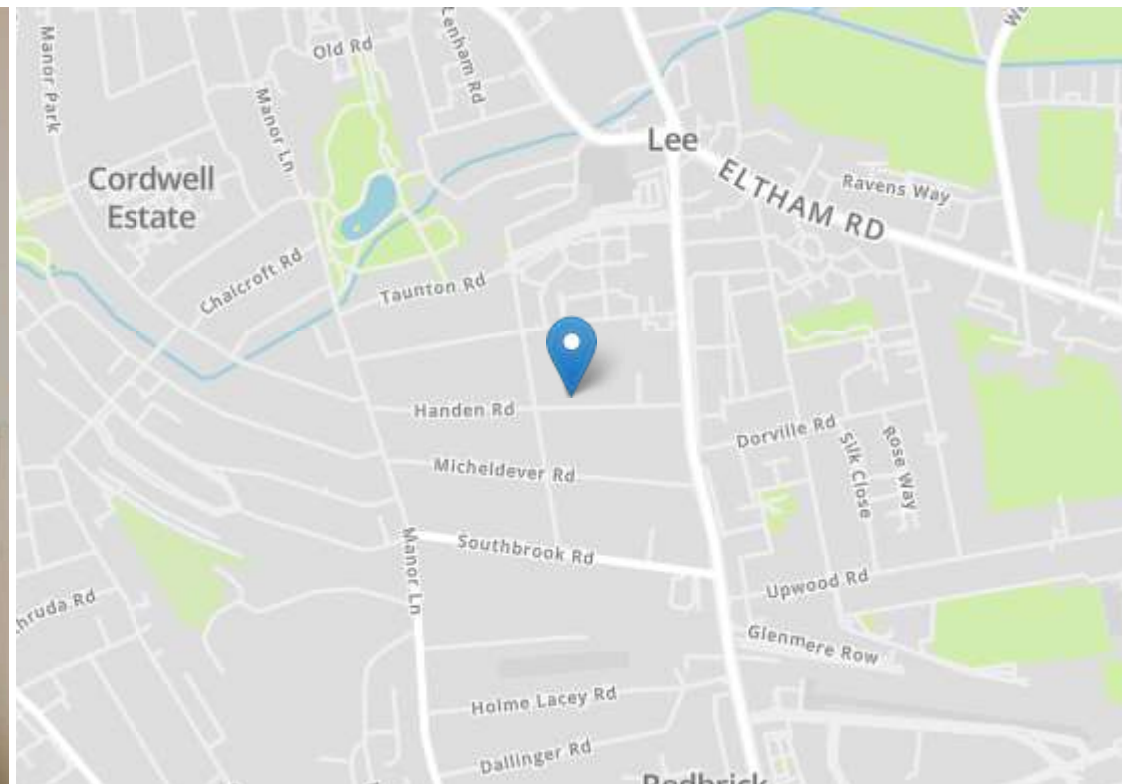
STATION

EN SUITE

PRIVATE GARDEN

AVAILABLE 28TH AUGUST





Robert Stanford Estates property particulars are produced in accordance with the Consumer Rights Act (2015) and should not be construed as a contract or offer. The contents of these property particulars are to provide a general illustration only and are inconsequential to any decisions to purchase a property. A potential buyer accepts that all representations made by these particulars are made in good faith on behalf of the seller and require verification by a buyers' legal and professional representatives prior to an exchange of contracts. We offer no guarantees for any structural component, service or appliance and while we make every effort to take accurate measurements and distances, they are illustrative only. Any reliance you place on information within these particulars is therefore strictly at your own risk.