



STANFORDS

Chiltonian Mews, Hither Green

Guide Price £405,000

This bright and inviting first-floor flat in Chiltonian Mews offers comfortable, well-arranged living in a popular and convenient setting. With its generous natural light and welcoming feel, it provides an appealing base for anyone seeking a practical home with a calm, modern atmosphere.

Inside, the flat features a well-sized lounge/diner that creates a sociable and flexible space for everyday living and entertaining. The two bedrooms are sensibly proportioned, the main bedroom being larger than average, offering comfortable accommodation with room to personalise. The kitchen and bathroom are neatly presented, with scope for updating over time should you wish to make the space truly your own.

Externally, the property benefits from well-kept communal areas and practical storage options, helping to keep day-to-day life running smoothly. Chiltonian Mews sits within a friendly and well-connected neighbourhood, with excellent transport links nearby, being 0.1 miles / a 2 minute walk to Hither Green Station which is connected to major routes. Green spaces, shops, and cafés are all within easy reach, along with reputable local schools, giving the area a strong sense of community and accessibility.

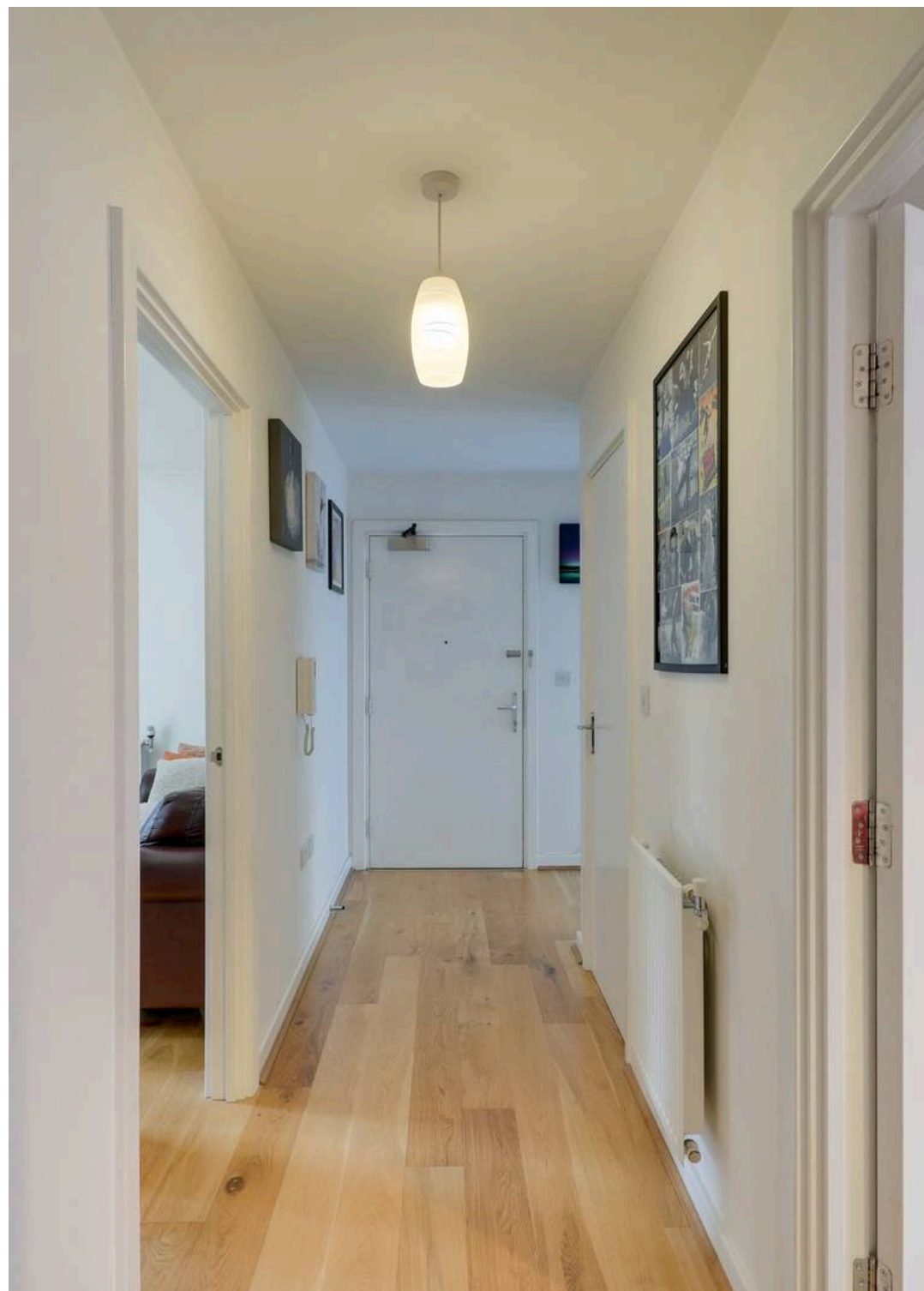
Council Tax band: C

Tenure: Leasehold

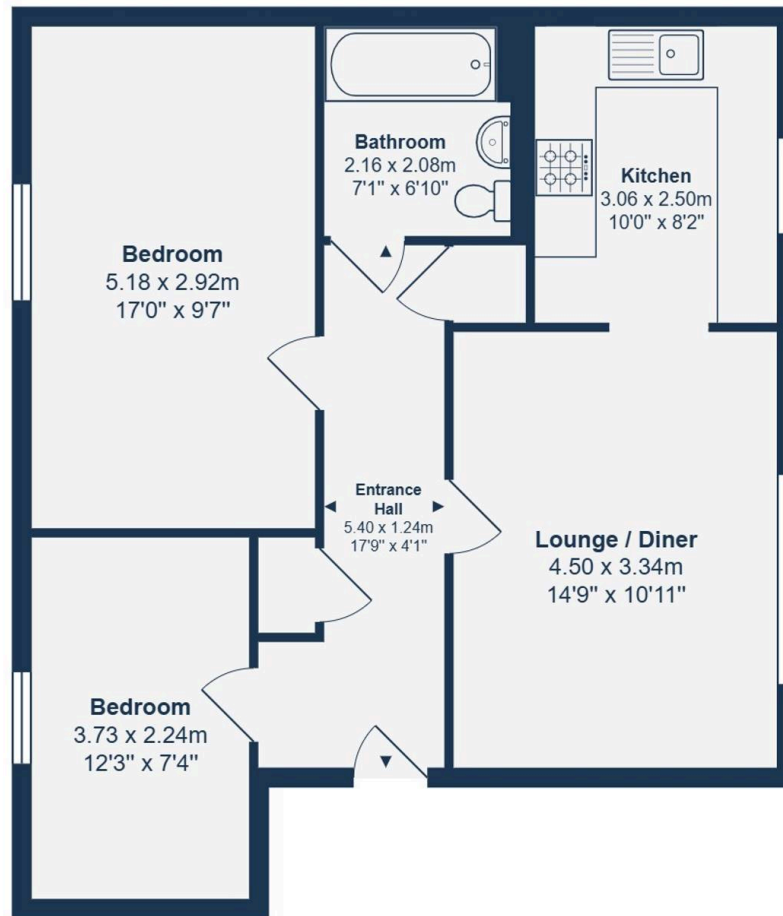
EPC Energy Efficiency Rating: B

EPC Environmental Impact Rating: B

- **2 Bedrooms**
- **Lounge/Diner**
- **First Floor Flat**
- **Total Area - 667sqft**
- **0.1 Miles To Hither Green Station**







First Floor

Total Area: 61.9 m² ... 667 ft²

Drawn for Stanfords Sales & Lettings

This floorplan is for illustrative purposes only. Whilst every effort has been made to ensure the accuracy of the plan, the dimensions and total area are approximated only and should not be relied upon.



FIRST FLOOR

Entrance Hall

17' 9" x 4' 1" (5.40m x 1.24m)

Pendant light, radiator, wood floor.

Lounge/Diner

14' 9" x 10' 11" (4.50m x 3.34m)

Pendant lights, double-glazed floor length windows, radiator, wood floor.

Kitchen

10' 0" x 8' 2" (3.06m x 2.50m)

Pendant lights, double-glazed window, matching wall and base counters, stainless steel sink with mixer tap, oven and gas hob with extractor fan, wood floor.

Bedroom

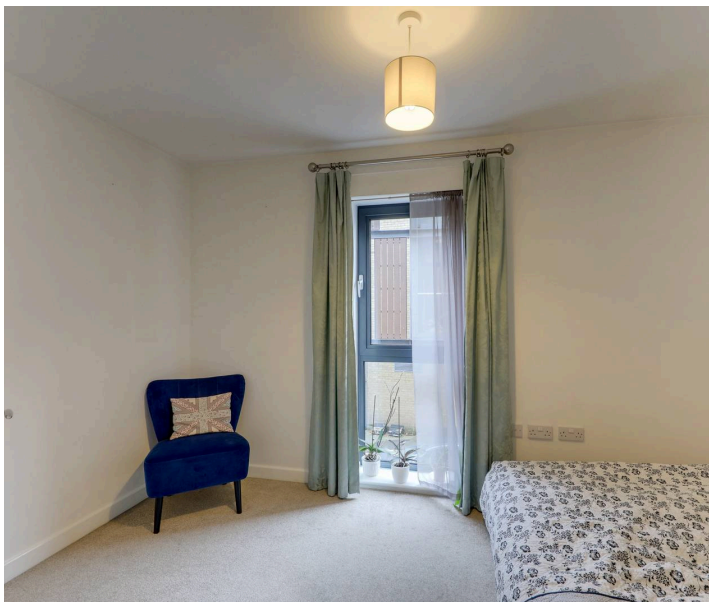
12' 3" x 7' 4" (3.73m x 2.24m)

Pendant light, floor length double-glazed window, radiator, carpet.

Bedroom

17' 0" x 9' 7" (5.18m x 2.92m)

Pendant light, floor length double-glazed window, radiator, carpet.



Bathroom

7' 1" x 6' 10" (2.16m x 2.08m)

Ceiling light, 3-piece matching toilet, sink and bath tub with mixer taps and detachable shower head, splash back tile, tile floor.

