



STANFORDS

84 Taymount Grange Taymount Rise, London  
£250,000



## 84 Taymount Grange Taymount Rise

### Forest Hill

Offered to the market with no onward chain, this one-bedroom top-floor flat is set within the iconic Taymount Grange, a sought-after 1930s Art Deco mansion building known for its character and charm.

Positioned on the top floor, the flat enjoys an abundance of natural light through its large Crittall-style windows, along with far-reaching views. The accommodation comprises a spacious lounge, a good-sized double bedroom with built-in storage, a separate kitchen, and a bathroom, offering a well-balanced layout with plenty of potential.

Ideally located just moments from Forest Hill Town Centre, the property is perfectly placed for a vibrant local lifestyle, with a wide range of independent shops, cafés, and restaurants nearby. Forest Hill Station provides frequent London Overground and National Rail services into Central London, making it an excellent choice for commuters. The renowned Horniman Museum and Gardens, with its expansive grounds and popular Sunday market, is also within easy reach.

A fantastic opportunity for buyers looking to secure a home in a landmark building and add their own personal touch.

- No Onward Chain
- Fantastic Views
- Top Floor Flat
- Sought After Location
- Communal Heating & Hot Water
- Landscaped Communal Garden
- Close to Forest Hill Station





## TOP FLOOR

### Reception Room

15' 9" x 13' 4" (4.80m x 4.06m)

Crittall windows, wall-mounted lights, cast-iron column radiator, 4 Billy bookcases, fitted carpet.

### Kitchen

8' 4" x 5' 8" (2.54m x 1.72m)

Crittall window, wall-mounted light, fitted kitchen units, 1.5 bowl sink with mixer tap, oven with electric hob, extractor hood, washing machine, fridge/freezer, vinyl flooring.

### Bedroom

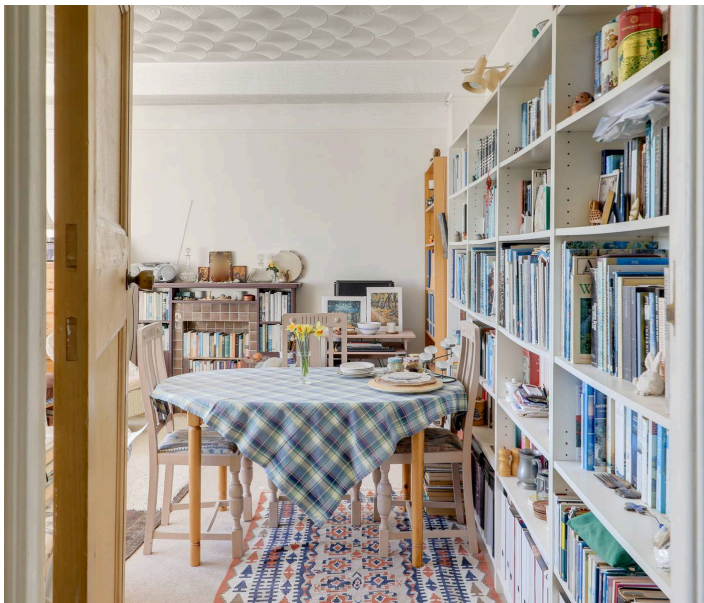
13' 4" x 13' 4" (4.07m x 4.06m)

Crittall window, wall-mounted light, storage cupboard, radiator, fitted carpet.

### Bathroom

8' 4" x 5' 1" (2.54m x 1.54m)

Crittall window, wall-mounted light, bathtub, washbasin, WC, heated towel rail, vinyl flooring.



## TOP FLOOR

### Reception Room

15' 9" x 13' 4" (4.80m x 4.06m)

Crittall windows, wall-mounted lights, cast-iron column radiator, 4 Billy bookcases, fitted carpet.

### Kitchen

8' 4" x 5' 8" (2.54m x 1.72m)

Crittall window, wall-mounted light, fitted kitchen units, 1.5 bowl sink with mixer tap, oven with electric hob, extractor hood, washing machine, fridge/freezer, vinyl flooring.

### Bedroom

13' 4" x 13' 4" (4.07m x 4.06m)

Crittall window, wall-mounted light, storage cupboard, radiator, fitted carpet.

### Bathroom

8' 4" x 5' 1" (2.54m x 1.54m)

Crittall window, wall-mounted light, bathtub, washbasin, WC, heated towel rail, vinyl flooring.



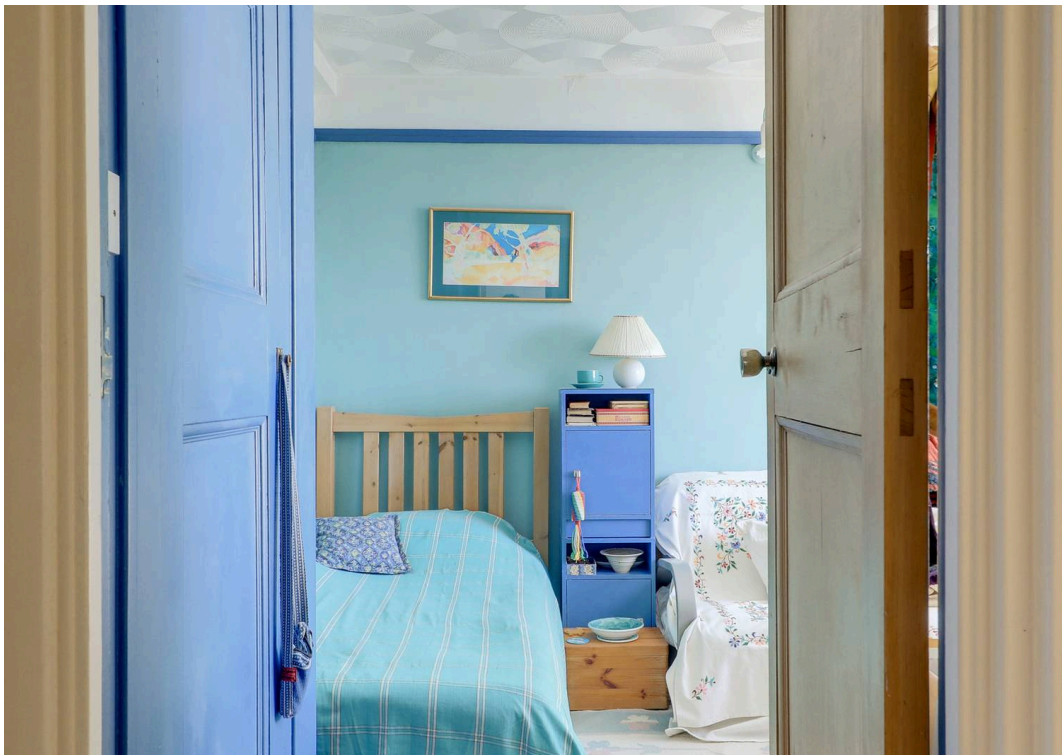
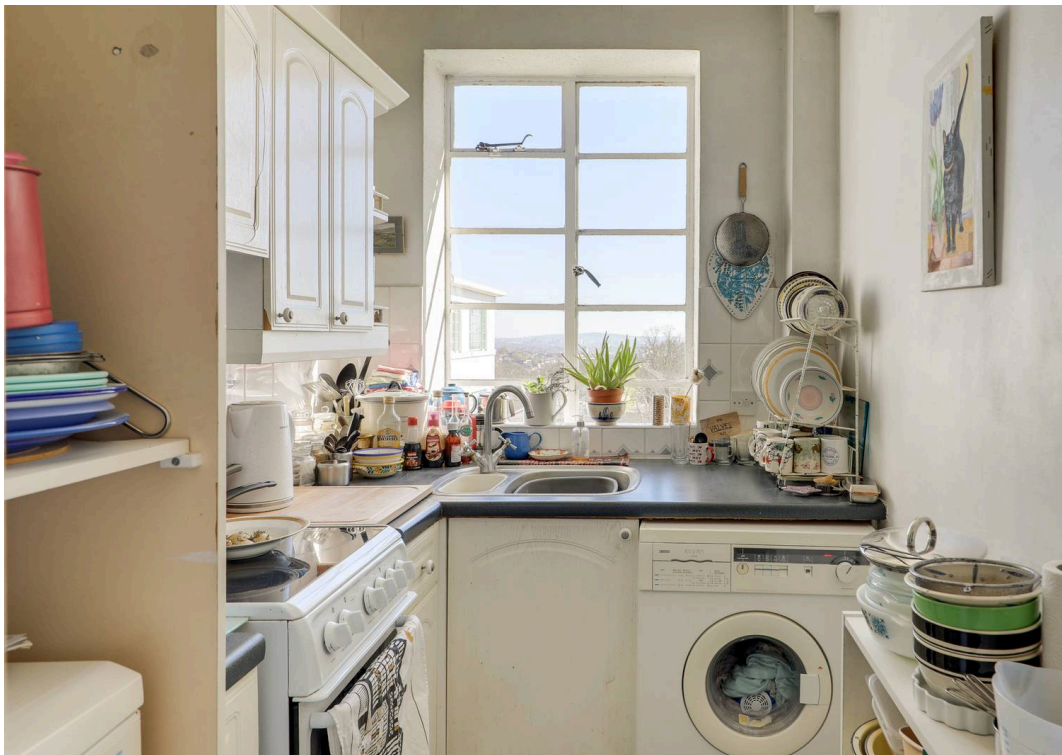


### Top Floor

Total Area: 50.5 m<sup>2</sup> ... 543 ft<sup>2</sup>

Drawn for Stanfords Sales & Lettings

This floorplan is for illustrative purposes only. Whilst every effort has been made to ensure the accuracy of the plan, the dimensions and total area are approximated only and should not be relied upon.





## Stanford Estates - Forest Hill

2a Dartmouth Road, London - SE23 3XU

02086996778

[foresthill@stanfordestates.london](mailto:foresthill@stanfordestates.london)

[stanfordestates.london/](https://stanfordestates.london/)

Robert Stanford Estates property particulars are prepared in accordance with the Consumer Rights Act 2015 and do not constitute an offer or contract. They are intended as a general guide only and should not be relied upon as statements of fact. All information is provided in good faith on behalf of the seller and should be verified by a buyer's legal and professional advisers prior to the exchange of contracts. No guarantee is given in respect of structure, services or appliances, and no surveys have been undertaken. Measurements and distances are approximate and for guidance only. Any reliance placed on this information is at the buyer's own risk.