



STANFORDS

Wellmeadow Road, London  
£500,000



A beautifully presented two-bedroom terraced house situated within the highly sought-after Corbett Estate, benefitting from a charming frontage with a striking tiled pathway and stylish interiors throughout.

Stepping inside, the property offers a light and modern feel, perfectly suited to contemporary living. The spacious open-plan lounge and kitchen is flooded with natural light from French doors opening onto the rear garden, creating a wonderful space for both everyday life and entertaining. The sleek modern kitchen offers ample storage, while the open layout provides plenty of room for both lounging and dining. A stylish contemporary bathroom completes the ground floor accommodation.

Upstairs, there are two generously sized double bedrooms, including a principal bedroom with built-in wardrobes.

Outside, the raised patio provides the perfect spot for alfresco dining and relaxing in the sun, while the garden extends to a versatile garden studio with power, ideal as a home office, gym, or creative space.

Located within the popular Corbett Estate, the area is well known for its friendly atmosphere, strong sense of community, and attractive period homes. Excellent transport links are available from nearby Hither Green Station, while residents enjoy a great selection of local cafés, shops, and restaurants, as well as easy access to the green open spaces of Mountsfield Park and Forster Memorial Park. Popular with families, the area is also well served by highly regarded nurseries and schools, including Torridon Primary School and Sandhurst Primary School. This charming home would make an ideal purchase for first-time buyers seeking a move-in-ready property in a well-connected and community-focused neighbourhood.

- **Freehold House**
- **Corbett Estate**
- **Light & Modern Interiors**
- **Open Plan Lounge & Kitchen**
- **Two Double Bedrooms**
- **Garden Studio**
- **0.7mi to Hither Green Station**



## GROUND FLOOR

### Entrance Hall

Pendant ceiling light, understairs storage cupboard, radiator, wood flooring.

### Open Plan Lounge & Kitchen

18' 6" x 11' 7" (5.65m x 3.54m)

Double-glazed French doors, inset ceiling spotlights, fitted kitchen units, sink with mixer tap and drainer, plumbing for dishwasher and washing machine, integrated fridge/freezer, oven and gas hob, extractor hood, cupboard housing boiler, column radiator, wood flooring.

### Bathroom

7' 4" x 5' 7" (2.23m x 1.71m)

Double-glazed windows, fitted shutters, inset ceiling spotlights, bathtub with shower and screen, washbasin on vanity unit, WC, column radiator with towel rail, tile flooring.

## FIRST FLOOR

### Bedroom

11' 7" x 8' 11" (3.54m x 2.72m)

Double-glazed window, fitted shutters, pendant ceiling light, built-in wardrobes, radiator, fitted carpet.

### Bedroom

11' 7" x 8' 2" (3.54m x 2.49m)

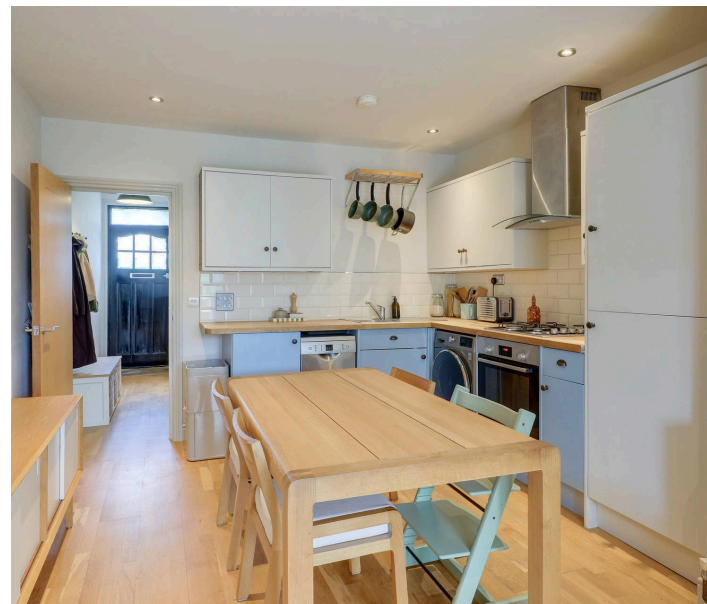
Double-glazed windows, fitted shutters, pendant ceiling light, radiator, fitted carpet.

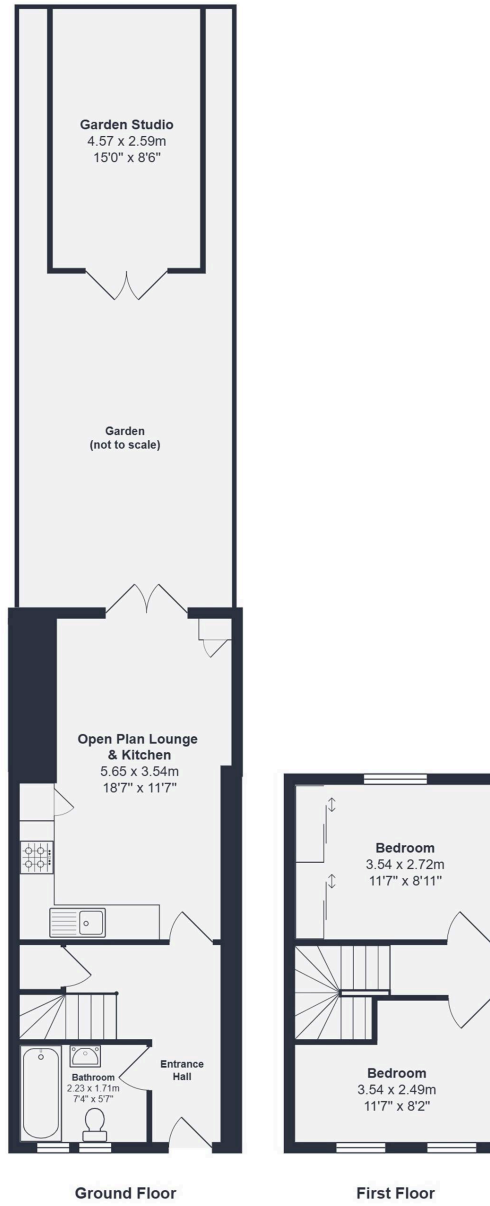
## OUTSIDE

### Garden Studio

15' 0" x 8' 6" (4.57m x 2.59m)

Fully powered garden studio with electric heater.





Total Area: 65.4 m<sup>2</sup> ... 704 ft<sup>2</sup>

Drawn for Stanfords Sales & Lettings

This floorplan is for illustrative purposes only. Whilst every effort has been made to ensure the accuracy of the plan, the dimensions and total area are approximated only and should not be relied upon.





## Stanford Estates - Catford

Stanford Estates, 1 Catford Broadway - SE6 4SP

02086903656

[catford@stanfordestates.london](mailto:catford@stanfordestates.london)

[stanfordestates.london/](http://stanfordestates.london/)